

Datasheet for ABIN7268105
anti-Cytokeratin 7 antibody



[Go to Product page](#)

4 Images

Overview

| | |
|--------------|---------------------------------------------------|
| Quantity: | 100 µL |
| Target: | Cytokeratin 7 (KRT7) |
| Reactivity: | Human |
| Host: | Rabbit |
| Clonality: | Monoclonal |
| Conjugate: | This Cytokeratin 7 antibody is un-conjugated |
| Application: | Western Blotting (WB), Immunohistochemistry (IHC) |

Product Details

| | |
|-------------------|----------------------------------------------------------------------|
| Purpose: | Cytokeratin 7 (KRT7) Rabbit mAb |
| Immunogen: | A synthesized peptide derived from human Cytokeratin 7 (KRT7) (KRT7) |
| Isotype: | IgG |
| Cross-Reactivity: | Human, Mouse, Rat |
| Characteristics: | Monoclonal Antibodies |
| Purification: | Affinity purification |

Target Details

| | |
|-------------------|--------------------------------------------------------------------------------------|
| Target: | Cytokeratin 7 (KRT7) |
| Alternative Name: | KRT7 (KRT7 Products) |
| Background: | The protein encoded by this gene is a member of the keratin gene family. The type II |

Target Details

cytokeratins consist of basic or neutral proteins which are arranged in pairs of heterotypic keratin chains coexpressed during differentiation of simple and stratified epithelial tissues. This type II cytokeratin is specifically expressed in the simple epithelia lining the cavities of the internal organs and in the gland ducts and blood vessels. The genes encoding the type II cytokeratins are clustered in a region of chromosome 12q12-q13. Alternative splicing may result in several transcript variants, however, not all variants have been fully described. [provided by RefSeq, Jul 2008],CK7, K2C7, K7, SCL,Cell Biology & Developmental Biology,Cytoskeleton,Cytoskeleton_Intermediate Filaments,Extracellular Matrix,Extracellular Matrix_Cytokeratin,Extracellular Matrix_Keratin,Signal Transduction,KRT7

Molecular Weight: 51kDa

Gene ID: 3855

UniProt: [P08729](#)

Application Details

Application Notes: WB,1:500 - 1:2000,IHC,1:50 - 1:200

Restrictions: For Research Use only

Handling

Format: Liquid

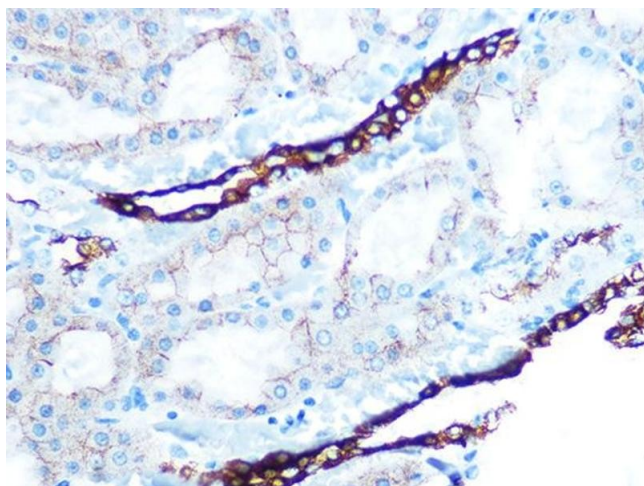
Buffer: PBS with 0.02 % sodium azide,0.05 % BSA,50 % glycerol, pH 7.3.

Preservative: Sodium azide

Precaution of Use: This product contains Sodium azide: a POISONOUS AND HAZARDOUS SUBSTANCE which should be handled by trained staff only.

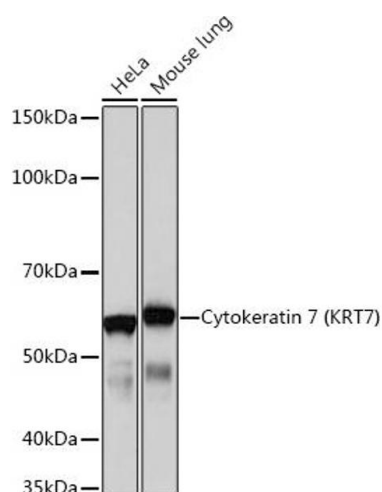
Storage: -20 °C

Storage Comment: Store at -20°C. Avoid freeze / thaw cycles.



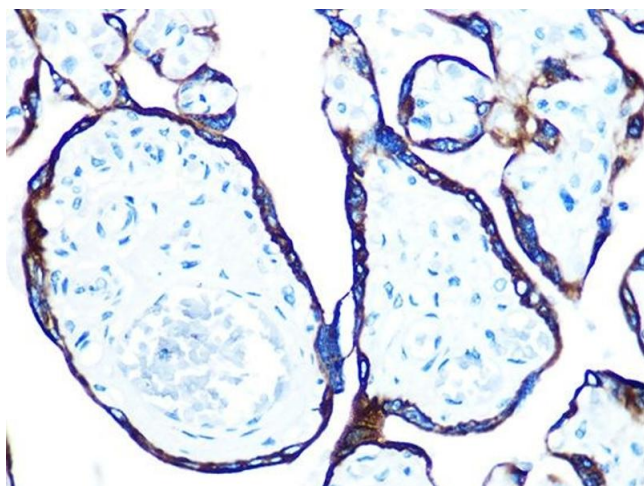
Immunohistochemistry

Image 1. Immunohistochemistry of paraffin-embedded rat kidney using Cytokeratin 7 (KRT7) (KRT7) Rabbit mAb at dilution of 1:100 (40x lens). Perform microwave antigen retrieval with 10 mM PBS buffer pH 7.2 before commencing with IHC staining protocol.



Western Blotting

Image 2. Western blot analysis of extracts of various cell lines, using Cytokeratin 7 (KRT7) (KRT7) Rabbit mAb at 1:1000 dilution. Secondary antibody: HRP Goat Anti-Rabbit IgG (H+L) (ABIN1684268 and ABIN3020597) at 1:10000 dilution. Lysates/proteins: 25 µg per lane. Blocking buffer: 3 % nonfat dry milk in TBST. Detection: ECL Basic Kit (RM00020). Exposure time: 10s.



Immunohistochemistry

Image 3. Immunohistochemistry of paraffin-embedded human placenta using Cytokeratin 7 (KRT7) (KRT7) Rabbit mAb at dilution of 1:100 (40x lens). Perform microwave antigen retrieval with 10 mM PBS buffer pH 7.2 before commencing with IHC staining protocol.

Please check the [product details page](#) for more images. Overall 4 images are available for ABIN7268105.