

Datasheet for ABIN7268119  
**anti-KSR1 antibody (AA 320-420)**[Go to Product page](#)

## 2 Images

## Overview

Quantity:	100 µL
Target:	KSR1
Binding Specificity:	AA 320-420
Reactivity:	Human
Host:	Rabbit
Clonality:	Polyclonal
Conjugate:	This KSR1 antibody is un-conjugated
Application:	Western Blotting (WB), Immunofluorescence (IF)

## Product Details

Purpose:	KSR1 Rabbit pAb
Immunogen:	Recombinant fusion protein containing a sequence corresponding to amino acids 320-420 of human KSR1 (NP_055053.1).
Sequence:	SSPAPFPTSS NPSSATTPPN PSPGQRDSRF NFPAAYFIHH RQQFIFPVPS AGHCWKCLLI AESLKENAFN ISAFAHAAPL PEAADGTRLD DQPKADVLEA H
Isotype:	IgG
Cross-Reactivity:	Human, Mouse, Rat
Characteristics:	Polyclonal Antibodies
Purification:	Affinity purification

## Target Details

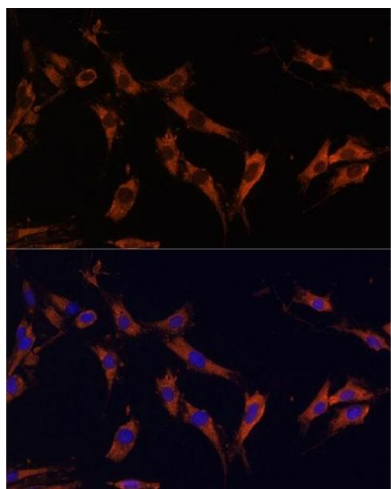
Target:	KSR1
Alternative Name:	KSR1 ( <a href="#">KSR1 Products</a> )
Background:	Part of a multiprotein signaling complex which promotes phosphorylation of Raf family members and activation of downstream MAP kinases (By similarity. Independently of its kinase activity, acts as MAP2K1/MEK1 and MAP2K2/MEK2-dependent allosteric activator of BRAF, upon binding to MAP2K1/MEK1 or MAP2K2/MEK2, dimerizes with BRAF and promotes BRAF-mediated phosphorylation of MAP2K1/MEK1 and/or MAP2K2/MEK2. Promotes activation of MAPK1 and/or MAPK3, both in response to EGF and to cAMP (By similarity. Its kinase activity is unsure (By similarity. Some protein kinase activity has been detected in vitro, however the physiological relevance of this activity is unknown (By similarity.,KSR1,KSR,RSU2,Signal Transduction,G protein signaling,G2/M DNA Damage Checkpoint,Kinase,Serine/threonine kinases,Tyrosine kinases,MAPK-Erk Signaling Pathway,KSR1
Molecular Weight:	84kDa/87kDa/97kDa/102kDa
Gene ID:	8844
UniProt:	<a href="#">Q8IVT5</a>

## Application Details

Application Notes:	WB,1:500 - 1:2000,IF,1:50 - 1:100
Restrictions:	For Research Use only

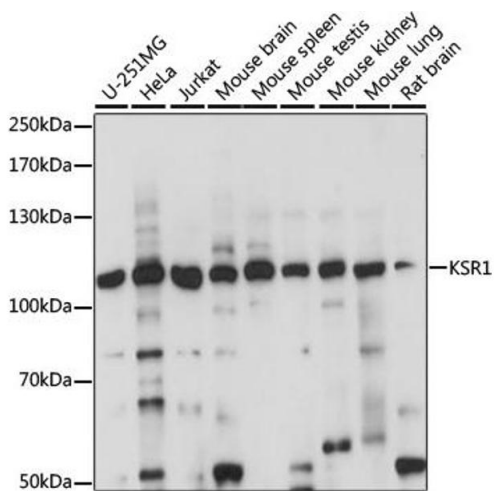
## Handling

Format:	Liquid
Buffer:	PBS with 0.02 % sodium azide,50 % glycerol, pH 7.3.
Preservative:	Sodium azide
Precaution of Use:	This product contains Sodium azide: a POISONOUS AND HAZARDOUS SUBSTANCE which should be handled by trained staff only.
Storage:	-20 °C
Storage Comment:	Store at -20°C. Avoid freeze / thaw cycles.



### Immunofluorescence

**Image 1.** Immunofluorescence analysis of C6 cells using KSR1 Polyclonal Antibody (ABIN7268119) at dilution of 1:100 (40x lens). Blue: DAPI for nuclear staining.



### Western Blotting

**Image 2.** Western blot analysis of extracts of various cell lines, using KSR1 antibody (ABIN7268119) at 1:1000 dilution. Secondary antibody: HRP Goat Anti-Rabbit IgG (H+L) (ABIN1684268 and ABIN3020597) at 1:10000 dilution. Lysates/proteins: 25 µg per lane. Blocking buffer: 3 % nonfat dry milk in TBST. Detection: ECL Basic Kit (RM00020). Exposure time: 10s.