



[Go to Product page](#)

Datasheet for ABIN7268124
anti-KIF1C antibody (AA 810-960)

1 Image

Overview

Quantity:	100 µL
Target:	KIF1C
Binding Specificity:	AA 810-960
Reactivity:	Human
Host:	Rabbit
Clonality:	Polyclonal
Conjugate:	This KIF1C antibody is un-conjugated
Application:	Western Blotting (WB)

Product Details

Purpose:	KIF1C Rabbit pAb
Immunogen:	Recombinant fusion protein containing a sequence corresponding to amino acids 810-960 of human KIF1C (NP_006603.2).
Sequence:	EEGGGAGSGG GSEEGARGAE VEDLRAHIDK LTGILQEVKL QNSSKDRELQ ALRDRMLRME RVIPLAQDHE DENEEGGEVP WAPPEGSEAA EEAAPSDRMP SARPPSPPLS SWERVSRLME EDPAFRRGRL RWLKQEQLRL QGLQGSGGRG G
Isotype:	IgG
Cross-Reactivity:	Human, Mouse, Rat
Characteristics:	Polyclonal Antibodies
Purification:	Affinity purification

Target Details

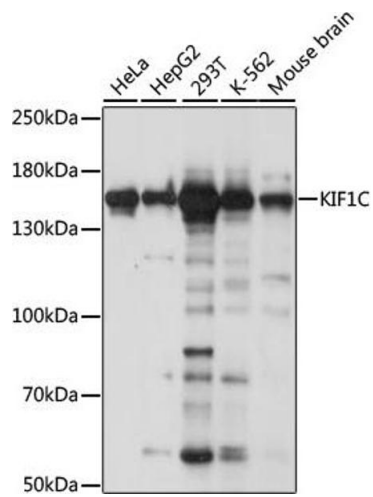
Target:	KIF1C
Alternative Name:	KIF1C (KIF1C Products)
Background:	<p>The protein encoded by this gene is a member of the kinesin-like protein family. The family members are microtubule-dependent molecular motors that transport organelles within cells and move chromosomes during cell division. Mutations in this gene are a cause of spastic ataxia 2, autosomal recessive.,KIF1C,LTXS1,SATX2,SAX2,SPAX2,SPG58,Epigenetics & Nuclear Signaling,RNA Binding,Signal Transduction,Cell Biology & Developmental Biology,Cytoskeleton,Motor Proteins,Immunology & Inflammation,Cell Intrinsic Innate Immunity Signaling Pathway,KIF1C</p>
Molecular Weight:	122kDa
Gene ID:	10749
UniProt:	O43896

Application Details

Application Notes:	WB,1:500 - 1:2000
Restrictions:	For Research Use only

Handling

Format:	Liquid
Buffer:	PBS with 0.02 % sodium azide,50 % glycerol, pH 7.3.
Preservative:	Sodium azide
Precaution of Use:	This product contains Sodium azide: a POISONOUS AND HAZARDOUS SUBSTANCE which should be handled by trained staff only.
Storage:	-20 °C
Storage Comment:	Store at -20°C. Avoid freeze / thaw cycles.



Western Blotting

Image 1. Western blot analysis of extracts of various cell lines, using KIF1C antibody (ABIN7268124) at 1:1000 dilution. Secondary antibody: HRP Goat Anti-Rabbit IgG (H+L) (ABIN1684268 and ABIN3020597) at 1:10000 dilution. Lysates/proteins: 25 µg per lane. Blocking buffer: 3% nonfat dry milk in TBST. Detection: ECL Basic Kit (RM00020). Exposure time: 5s.