



[Go to Product page](#)

Datasheet for ABIN7268125
anti-KIF20A antibody (AA 591-890)

1 Image

Overview

Quantity:	100 µL
Target:	KIF20A
Binding Specificity:	AA 591-890
Reactivity:	Human
Host:	Rabbit
Clonality:	Polyclonal
Conjugate:	This KIF20A antibody is un-conjugated
Application:	Western Blotting (WB)

Product Details

Purpose:	KIF20A Rabbit pAb
Immunogen:	Recombinant fusion protein containing a sequence corresponding to amino acids 591-890 of human KIF20A (NP_005724.1).
Sequence:	EICNEMVEQM QQREQWCSEH LDTQKELLE MYEEKLNILK ESLTSFYQEE IQRDEKIEE LEALLQEARQ QSVAHQQSGS ELALRRSQRL AASASTQQLQ EVKAKLQQCK AELNSTTEEL HKYQKMLEPP PSAKPFTIDV DKKLEEGQKN IRLRTELQK LGESLQSAER ACCHSTGAGK LRQALTTCCDD ILIKQDQTLA ELQNNMVLVK LDLRKAACI AEQYHTVLKL QGQVSAKKRL GTNQENQQPN QPPGKKPFL RNLLPRTPTC QSSTDCSPYA RILRSRRSPL LKSGPFGKKY
Isotype:	IgG
Cross-Reactivity:	Human, Mouse, Rat
Characteristics:	Polyclonal Antibodies

Product Details

Purification: Affinity purification

Target Details

Target: KIF20A

Alternative Name: KIF20A ([KIF20A Products](#))

Background: Mitotic kinesin required for chromosome passenger complex (CPC-mediated cytokinesis. Following phosphorylation by PLK1, involved in recruitment of PLK1 to the central spindle. Interacts with guanosine triphosphate (GTP-bound forms of RAB6A and RAB6B. May act as a motor required for the retrograde RAB6 regulated transport of Golgi membranes and associated vesicles along microtubules. Has a microtubule plus end-directed motility.,KIF20A,MKLP2,RAB6KIFL,Signal Transduction,Cell Biology & Developmental Biology,Cell Cycle,Cytoskeleton,Motor Proteins,Immunology & Inflammation,Cytokines,KIF20A

Molecular Weight: 98kDa/100kDa

Gene ID: 10112

UniProt: [O95235](#)

Application Details

Application Notes: WB,1:200 - 1:2000

Restrictions: For Research Use only

Handling

Format: Liquid

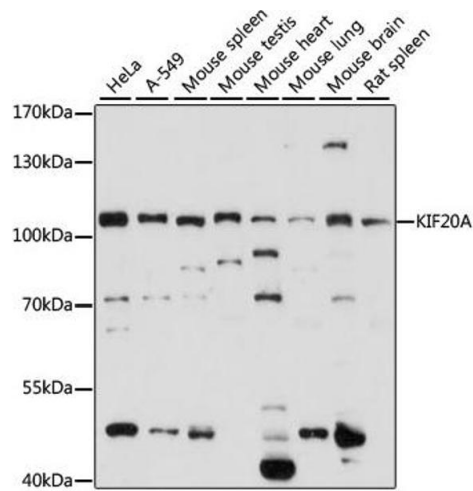
Buffer: PBS with 0.02 % sodium azide,50 % glycerol, pH 7.3.

Preservative: Sodium azide

Precaution of Use: This product contains Sodium azide: a POISONOUS AND HAZARDOUS SUBSTANCE which should be handled by trained staff only.

Storage: -20 °C

Storage Comment: Store at -20°C. Avoid freeze / thaw cycles.



Western Blotting

Image 1. Western blot analysis of extracts of various cell lines, using KIF20A antibody (ABIN7268125) at 1:1000 dilution. Secondary antibody: HRP Goat Anti-Rabbit IgG (H+L) (ABIN1684268 and ABIN3020597) at 1:10000 dilution. Lysates/proteins: 25 µg per lane. Blocking buffer: 3% nonfat dry milk in TBST. Detection: ECL Basic Kit (RM00020). Exposure time: 15s.