



[Go to Product page](#)

Datasheet for ABIN7268129  
**anti-KIF22 antibody (AA 456-665)**

4 Images

Overview

Quantity:	100 µL
Target:	KIF22
Binding Specificity:	AA 456-665
Reactivity:	Human
Host:	Rabbit
Clonality:	Polyclonal
Conjugate:	This KIF22 antibody is un-conjugated
Application:	Western Blotting (WB), Immunohistochemistry (IHC), Immunofluorescence (IF)

Product Details

Purpose:	KIF22 Rabbit pAb
Immunogen:	Recombinant fusion protein containing a sequence corresponding to amino acids 456-665 of human KIF22 (NP_015556.1).
Sequence:	QGAPLLSTPK RERMVLMKTV EEKDLEIERL KTKQKELEAK MLAQKAEKE NHCPTMLRPL SHRTVTGAKP LKKAVVMPLQ LIQEQAASPN AEIHILKNKG RKRKLESLDA LEPEEKAEDC WELQISPELL AHGRQKILD LNEGSARDLR SLQRIGPKKA QLIVGWRELH GPFSQVEDLE RVEGITGKQM ESFLKANILG LAAGQRCGAS
Isotype:	IgG
Cross-Reactivity:	Human, Mouse
Characteristics:	Polyclonal Antibodies

## Product Details

---

Purification: Affinity purification

## Target Details

---

Target: KIF22

Alternative Name: KIF22 ([KIF22 Products](#))

Background: The protein encoded by this gene is a member of the kinesin-like protein family. The family members are microtubule-dependent molecular motors that transport organelles within cells and move chromosomes during cell division. The C-terminal half of this protein has been shown to bind DNA. Studies with the *Xenopus* homolog suggests its essential role in metaphase chromosome alignment and maintenance. Alternatively spliced transcript variants encoding different isoforms have been found for this gene.,KIF22,A-328A3.2,KID,KNL4,OBP,OBP-1,OBP-2,SEMDJL2,Signal Transduction,Cell Biology & Developmental Biology,Cytoskeleton,Motor Proteins,KIF22

Molecular Weight: 66kDa/73kDa

Gene ID: 3835

UniProt: [Q14807](#)

## Application Details

---

Application Notes: WB,1:200 - 1:2000,IHC,1:50 - 1:200,IF,1:50 - 1:200

Restrictions: For Research Use only

## Handling

---

Format: Liquid

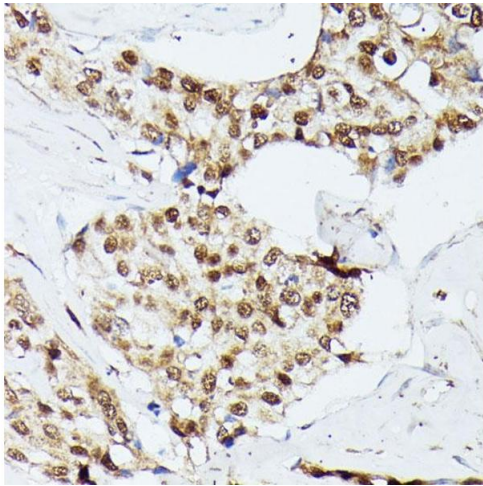
Buffer: PBS with 0.02 % sodium azide,50 % glycerol, pH 7.3.

Preservative: Sodium azide

Precaution of Use: This product contains Sodium azide: a POISONOUS AND HAZARDOUS SUBSTANCE which should be handled by trained staff only.

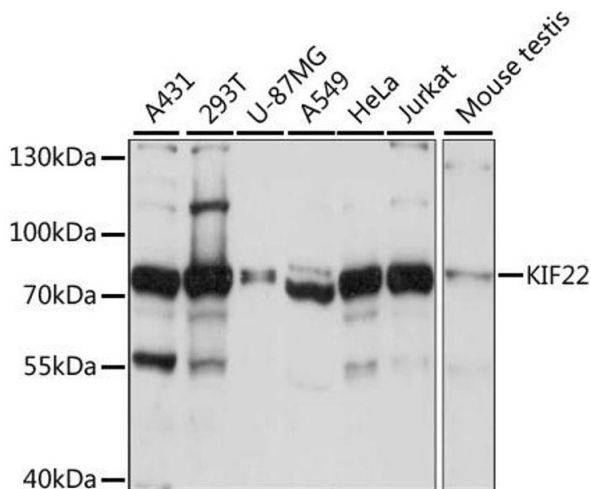
Storage: -20 °C

Storage Comment: Store at -20°C. Avoid freeze / thaw cycles.



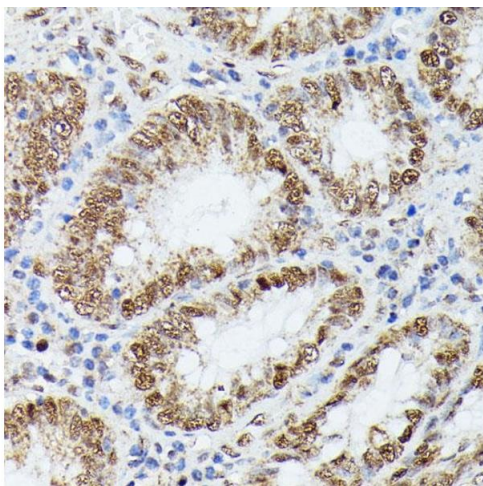
### Immunohistochemistry

**Image 1.** Immunohistochemistry of paraffin-embedded human breast cancer using KIF22 antibody at dilution of 1:100 (40x lens). Perform microwave antigen retrieval with 10 mM PBS buffer pH 7.2 before commencing with IHC staining protocol.



### Western Blotting

**Image 2.** Western blot analysis of extracts of various cell lines, using KIF22 antibody at 1:1000 dilution. Secondary antibody: HRP Goat Anti-Rabbit IgG (H+L) (ABIN1684268 and ABIN3020597) at 1:10000 dilution. Lysates/proteins: 25 µg per lane. Blocking buffer: 3% nonfat dry milk in TBST. Detection: ECL Basic Kit (RM00020). Exposure time: 3s.



### Immunohistochemistry

**Image 3.** Immunohistochemistry of paraffin-embedded human colon using KIF22 antibody at dilution of 1:100 (40x lens). Perform microwave antigen retrieval with 10 mM PBS buffer pH 7.2 before commencing with IHC staining protocol.

Please check the [product details page](#) for more images. Overall 4 images are available for ABIN7268129.