



[Go to Product page](#)

Datasheet for ABIN7268132

## anti-KIF3A antibody

### 3 Images

#### Overview

Quantity:	100 µL
Target:	KIF3A
Reactivity:	Human
Host:	Rabbit
Clonality:	Monoclonal
Conjugate:	This KIF3A antibody is un-conjugated
Application:	Western Blotting (WB), Immunohistochemistry (IHC), Immunofluorescence (IF)

#### Product Details

Purpose:	KIF3A Rabbit mAb
Immunogen:	A synthesized peptide derived from human KIF3A
Isotype:	IgG
Cross-Reactivity:	Human, Mouse, Rat
Characteristics:	Monoclonal Antibodies
Purification:	Affinity purification

#### Target Details

Target:	KIF3A
Alternative Name:	KIF3A ( <a href="#">KIF3A Products</a> )
Background:	Microtubule-based anterograde translocator for membranous organelles. Plus end-directed

## Target Details

---

microtubule sliding activity in vitro. Plays a role in primary cilia formation. Plays a role in centriole cohesion and subdistal appendage organization and function. Regulates the formation of the subdistal appendage via recruitment of DCTN1 to the centriole. Also required for ciliary basal feet formation and microtubule anchoring to mother centriole.,FLA10, KLP-20,Cell Biology & Developmental Biology,Cytoskeleton,Cytoskeleton\_Motor Proteins,Hedgehog Signaling Pathway,Immunology & Inflammation,Neuroscience,Signal Transduction,Stem Cells,KIF3A

---

Molecular Weight: 80kDa

---

Gene ID: 11127

---

UniProt: [Q9Y496](#)

---

Pathways: [Hedgehog Signaling](#)

## Application Details

---

---

Application Notes: WB,1:500 - 1:2000,IHC,1:50 - 1:200,IF,1:50 - 1:200

---

Restrictions: For Research Use only

## Handling

---

---

Format: Liquid

---

Buffer: PBS with 0.02 % sodium azide,0.05 % BSA,50 % glycerol, pH 7.3.

---

Preservative: Sodium azide

---

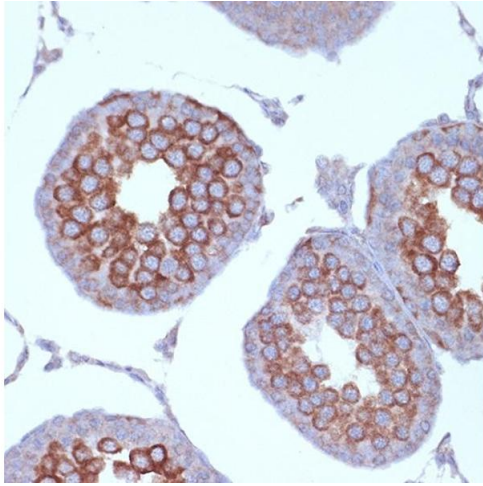
Precaution of Use: This product contains Sodium azide: a POISONOUS AND HAZARDOUS SUBSTANCE which should be handled by trained staff only.

---

Storage: -20 °C

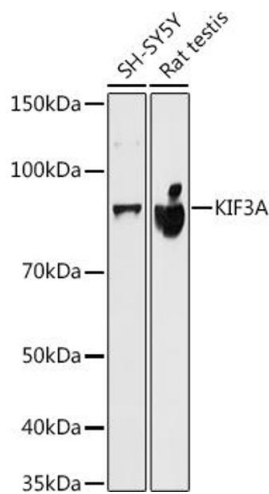
---

Storage Comment: Store at -20°C. Avoid freeze / thaw cycles.



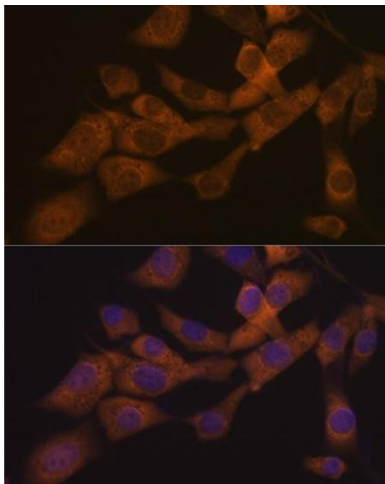
### Immunohistochemistry

**Image 1.** Immunohistochemistry of paraffin-embedded rat testis using KIF3A Rabbit mAb (ABIN7268132) at dilution of 1:100 (40x lens). Perform microwave antigen retrieval with 10 mM Tris/EDTA buffer pH 9.0 before commencing with IHC staining protocol.



### Western Blotting

**Image 2.** Western blot analysis of extracts of various cell lines, using KIF3A antibody (ABIN7268132) at 1:500 dilution. Secondary antibody: HRP Goat Anti-Rabbit IgG (H+L) (ABIN1684268 and ABIN3020597) at 1:10000 dilution. Lysates/proteins: 25 µg per lane. Blocking buffer: 3 % nonfat dry milk in TBST. Detection: ECL Basic Kit (RM00020). Exposure time: 10s.



### Immunofluorescence

**Image 3.** Immunofluorescence analysis of NIH-3T3 cells using KIF3A Rabbit mAb (ABIN7268132) at dilution of 1:100 (40x lens). Blue: DAPI for nuclear staining.