

Datasheet for ABIN7268134

anti-KIF4A antibody

4 Images

[Go to Product page](#)

Overview

Quantity:	100 µL
Target:	KIF4A
Reactivity:	Human
Host:	Rabbit
Clonality:	Monoclonal
Conjugate:	This KIF4A antibody is un-conjugated
Application:	Western Blotting (WB), Immunohistochemistry (IHC)

Product Details

Purpose:	KIF4A Rabbit mAb
Immunogen:	A synthesized peptide derived from human KIF4A
Isotype:	IgG
Cross-Reactivity:	Human, Mouse, Rat
Characteristics:	Monoclonal Antibodies
Purification:	Affinity purification

Target Details

Target:	KIF4A
Alternative Name:	KIF4A (KIF4A Products)
Background:	This gene encodes a member of the kinesin 4 subfamily of kinesin related proteins. The

Target Details

encoded protein is an ATP dependent microtubule-based motor protein that is involved in the intracellular transport of membranous organelles. This protein also associates with condensed chromosome arms and may be involved in maintaining chromosome integrity during mitosis. This protein may also be involved in the organization of the central spindle prior to cytokinesis. A pseudogene of this gene is found on chromosome X.[provided by RefSeq, Mar 2010],KIF4, KIF4G1, MRX100,Apoptosis,Cell Biology & Developmental Biology,Cell Cycle,Cytoskeleton,Cytoskeleton_Motor Proteins,Epigenetics & Nuclear Signaling,Signal Transduction,KIF4A

Molecular Weight: 150kDa

Gene ID: 24137

UniProt: [O95239](#)

Application Details

Application Notes: WB,1:500 - 1:2000,IHC,1:50 - 1:200

Restrictions: For Research Use only

Handling

Format: Liquid

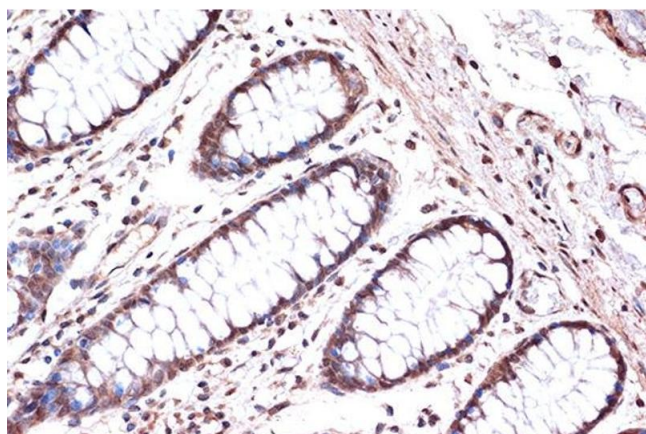
Buffer: PBS with 0.02 % sodium azide,0.05 % BSA,50 % glycerol, pH 7.3.

Preservative: Sodium azide

Precaution of Use: This product contains Sodium azide: a POISONOUS AND HAZARDOUS SUBSTANCE which should be handled by trained staff only.

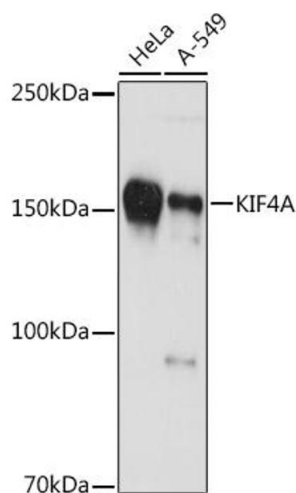
Storage: -20 °C

Storage Comment: Store at -20°C. Avoid freeze / thaw cycles.



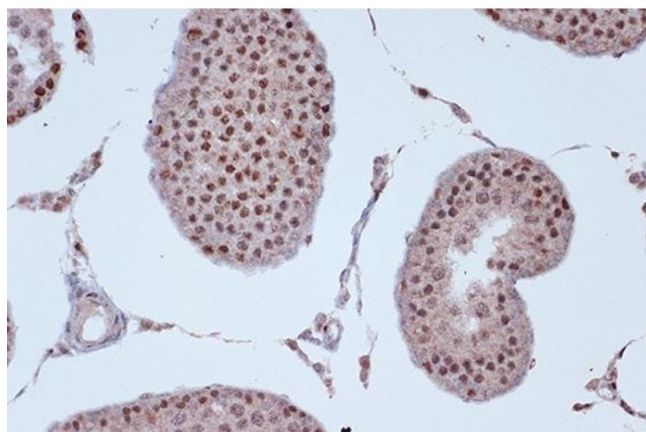
Immunohistochemistry

Image 1. Immunohistochemistry of paraffin-embedded human colon using KIF4A Rabbit mAb (ABIN7268134) at dilution of 1:100 (40x lens). Perform microwave antigen retrieval with 10 mM Tris/EDTA buffer pH 9.0 before commencing with IHC staining protocol.



Western Blotting

Image 2. Western blot analysis of extracts of various cell lines, using KIF4A antibody (ABIN7268134) at 1:1000 dilution. Secondary antibody: HRP Goat Anti-Rabbit IgG (H+L) (ABIN1684268 and ABIN3020597) at 1:10000 dilution. Lysates/proteins: 25 µg per lane. Blocking buffer: 3 % nonfat dry milk in TBST. Detection: ECL Basic Kit (RM00020). Exposure time: 60s.



Immunohistochemistry

Image 3. Immunohistochemistry of paraffin-embedded rat testis using KIF4A Rabbit mAb (ABIN7268134) at dilution of 1:100 (40x lens). Perform microwave antigen retrieval with 10 mM Tris/EDTA buffer pH 9.0 before commencing with IHC staining protocol.

Please check the [product details page](#) for more images. Overall 4 images are available for ABIN7268134.