



[Go to Product page](#)

Datasheet for ABIN7268138
anti-KIF2A antibody (AA 30-220)

2 Images

Overview

Quantity:	100 µL
Target:	KIF2A
Binding Specificity:	AA 30-220
Reactivity:	Human
Host:	Rabbit
Clonality:	Polyclonal
Conjugate:	This KIF2A antibody is un-conjugated
Application:	Western Blotting (WB)

Product Details

Purpose:	KIF2A Rabbit pAb
Immunogen:	Recombinant fusion protein containing a sequence corresponding to amino acids 30-220 of human KIF2A (NP_004511.2).
Sequence:	TSLNEDNESV TVEWIENGDT KGKEIDLESI FSLNPDLPD EEIEPSPETP PPPASSAKVN KIVKNRRTVA SIKNDPPSRD NRVVGSARAR PSQFPEQSSS AQQNGSVSDI SPVQAAKKEF GPPSRRKSNC VKEVEKLQEK REKRRLQQQE LREKRAQDVD ATNPNYEIMC MIRDFRGLD YRPLTTADPI D
Isotype:	IgG
Cross-Reactivity:	Human, Mouse, Rat
Characteristics:	Polyclonal Antibodies

Product Details

Purification: Affinity purification

Target Details

Target: KIF2A

Alternative Name: KIF2A ([KIF2A Products](#))

Background: The protein encoded by this gene is a plus end-directed motor required for normal mitotic progression. The encoded protein is required for normal spindle activity during mitosis and is necessary for normal brain development. Several transcript variants encoding different isoforms have been found for this gene.,KIF2A,CDCBM3,HK2,KIF2,Signal Transduction,Cell Biology & Developmental Biology,Cell Cycle,Centromere,Cytoskeleton,Motor Proteins,KIF2A

Molecular Weight: 75kDa/76kDa/77kDa/79kDa/84kDa

Gene ID: 3796

UniProt: [O00139](#)

Pathways: [Microtubule Dynamics](#), [Ribonucleoprotein Complex Subunit Organization](#)

Application Details

Application Notes: WB,1:500 - 1:2000

Restrictions: For Research Use only

Handling

Format: Liquid

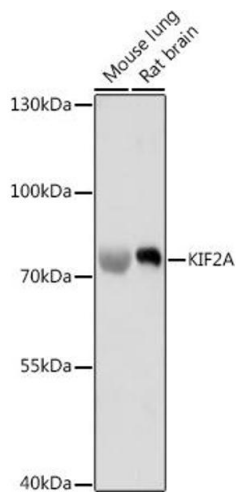
Buffer: PBS with 0.02 % sodium azide,50 % glycerol, pH 7.3.

Preservative: Sodium azide

Precaution of Use: This product contains Sodium azide: a POISONOUS AND HAZARDOUS SUBSTANCE which should be handled by trained staff only.

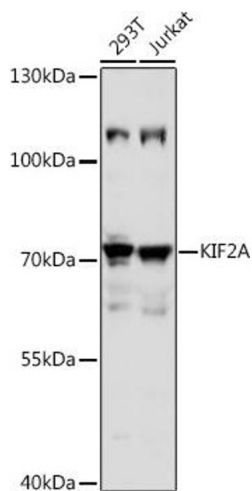
Storage: -20 °C

Storage Comment: Store at -20°C. Avoid freeze / thaw cycles.



Western Blotting

Image 1. Western blot analysis of extracts of various cell lines, using KIF2A antibody (ABIN7268138) at 1:1000 dilution. Secondary antibody: HRP Goat Anti-Rabbit IgG (H+L) (ABIN1684268 and ABIN3020597) at 1:10000 dilution. Lysates/proteins: 25 µg per lane. Blocking buffer: 3 % nonfat dry milk in TBST. Detection: ECL Basic Kit (RM00020). Exposure time: 10s.



Western Blotting

Image 2. Western blot analysis of extracts of various cell lines, using KIF2A antibody (ABIN7268138) at 1:1000 dilution. Secondary antibody: HRP Goat Anti-Rabbit IgG (H+L) (ABIN1684268 and ABIN3020597) at 1:10000 dilution. Lysates/proteins: 25 µg per lane. Blocking buffer: 3 % nonfat dry milk in TBST. Detection: ECL Basic Kit (RM00020). Exposure time: 5s.