



[Go to Product page](#)

Datasheet for ABIN7268139

anti-KLC1 antibody

2 Images

Overview

Quantity:	100 µL
Target:	KLC1
Reactivity:	Human
Host:	Rabbit
Clonality:	Monoclonal
Conjugate:	This KLC1 antibody is un-conjugated
Application:	Western Blotting (WB)

Product Details

Purpose:	Kinesin light chain 1 (KLC1) Rabbit mAb
Immunogen:	Recombinant protein of human Kinesin light chain 1 (Kinesin light chain 1 (KLC1)).
Isotype:	IgG
Cross-Reactivity:	Human, Mouse, Rat
Characteristics:	Monoclonal Antibodies
Purification:	Affinity purification

Target Details

Target:	KLC1
Alternative Name:	KLC1 (KLC1 Products)
Background:	Conventional kinesin is a tetrameric molecule composed of two heavy chains and two light

Target Details

chains, and transports various cargos along microtubules toward their plus ends. The heavy chains provide the motor activity, while the light chains bind to various cargos. This gene encodes a member of the kinesin light chain family. It associates with kinesin heavy chain through an N-terminal domain, and six tetratricopeptide repeat (TPR) motifs are thought to be involved in binding of cargos such as vesicles, mitochondria, and the Golgi complex. Thus, kinesin light chains function as adapter molecules and not motors per se. Although previously named 'kinesin 2', this gene is not a member of the kinesin-2 / kinesin heavy chain subfamily of kinesin motor proteins. Extensive alternative splicing produces isoforms with different C-termini that are proposed to bind to different cargos, however, the full-length nature and/or biological validity of most of these variants have not been determined. KLC1, KLC, KNS2, KNS2A, kinesin light chain 1, Signal Transduction, Cell Biology & Developmental Biology, Cytoskeleton, Motor Proteins, Neuroscience, Cell Type Marker, Neuron marker, Axon marker, KLC1

Molecular Weight: 65kDa

Gene ID: 3831

UniProt: [Q07866](#)

Pathways: [Ribonucleoprotein Complex Subunit Organization](#)

Application Details

Application Notes: WB, 1:500 - 1:2000

Restrictions: For Research Use only

Handling

Format: Liquid

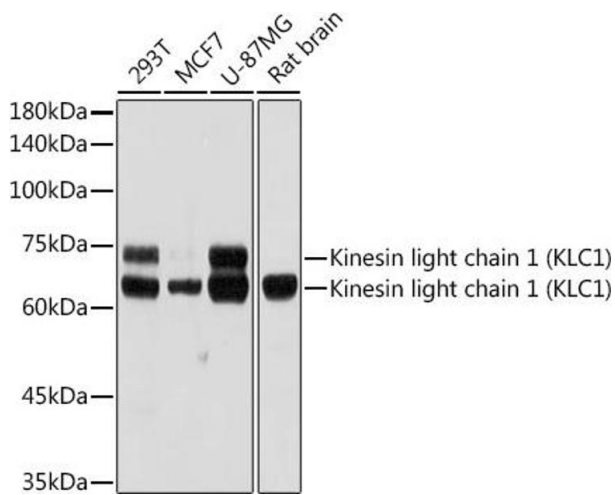
Buffer: PBS with 0.02 % sodium azide, 0.05 % BSA, 50 % glycerol, pH 7.3.

Preservative: Sodium azide

Precaution of Use: This product contains Sodium azide: a POISONOUS AND HAZARDOUS SUBSTANCE which should be handled by trained staff only.

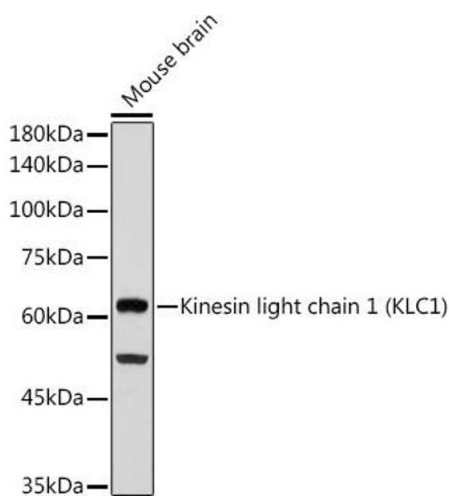
Storage: -20 °C

Storage Comment: Store at -20°C. Avoid freeze / thaw cycles.



Western Blotting

Image 1. Western blot analysis of extracts of various cell lines, using Kinesin light chain 1 (Kinesin light chain 1 (KLC1)) antibody (ABIN7268139) at 1:1000 dilution. Secondary antibody: HRP Goat Anti-Rabbit IgG (H+L) (ABIN1684268 and ABIN3020597) at 1:10000 dilution. Lysates/proteins: 25 µg per lane. Blocking buffer: 3 % nonfat dry milk in TBST. Detection: ECL Basic Kit (RM00020). Exposure time: 30s.



Western Blotting

Image 2. Western blot analysis of extracts of Mouse brain, using Kinesin light chain 1 (Kinesin light chain 1 (KLC1)) antibody (ABIN7268139) at 1:1000 dilution. Secondary antibody: HRP Goat Anti-Rabbit IgG (H+L) (ABIN1684268 and ABIN3020597) at 1:10000 dilution. Lysates/proteins: 25 µg per lane. Blocking buffer: 3 % nonfat dry milk in TBST. Detection: ECL Basic Kit (RM00020). Exposure time: 180s.