



Datasheet for ABIN7268148

anti-KRAB Box Domain Containing 4 (KRBOX4) (C-Term) antibody



[Go to Product page](#)

1 Image

Overview

Quantity:	100 µL
Target:	KRAB Box Domain Containing 4 (KRBOX4)
Binding Specificity:	C-Term
Reactivity:	Human
Host:	Rabbit
Clonality:	Polyclonal
Conjugate:	Un-conjugated
Application:	Western Blotting (WB)

Product Details

Purpose:	KRBOX4 Rabbit pAb
Immunogen:	A synthetic peptide corresponding to a sequence within amino acids 100 to the C-terminus of human KRBOX4 (NP_060246.2).
Sequence:	WQAAFIGKET LKDESGQESR TCRKSIYLST EFDSVRQLRP KYYSWEKAFK TSFKLSWSKW KLCKKER
Isotype:	IgG
Cross-Reactivity:	Human, Mouse, Rat
Characteristics:	Polyclonal Antibodies
Purification:	Affinity purification

Target Details

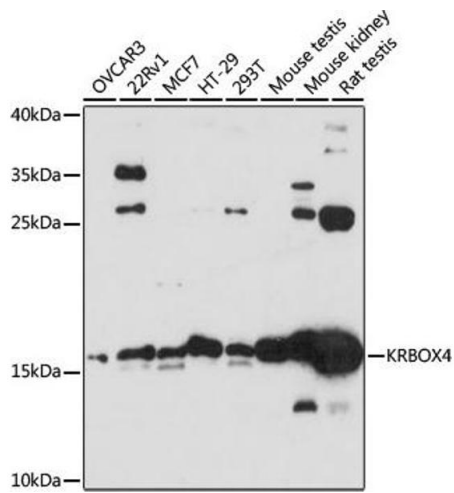
Target:	KRAB Box Domain Containing 4 (KRBOX4)
Alternative Name:	KRBOX4 (KRBOX4 Products)
Background:	This encodes a zinc finger protein with an N-terminal KRAB (Kruppel-associated) domain found in transcriptional repressors. This gene is located in a region of the X chromosome thought to be involved in nonsyndromic X-linked mental retardation. Multiple transcript variants encoding different isoforms have been found for this gene.,KRBOX4,ZNF673,Epigenetics & Nuclear Signaling,KRBOX4
Molecular Weight:	11kDa/19kDa/20kDa
Gene ID:	55634
UniProt:	Q5JUW0

Application Details

Application Notes:	WB,1:500 - 1:2000
Restrictions:	For Research Use only

Handling

Format:	Liquid
Buffer:	PBS with 0.02 % sodium azide,50 % glycerol, pH 7.3.
Preservative:	Sodium azide
Precaution of Use:	This product contains Sodium azide: a POISONOUS AND HAZARDOUS SUBSTANCE which should be handled by trained staff only.
Storage:	-20 °C
Storage Comment:	Store at -20°C. Avoid freeze / thaw cycles.



Western Blotting

Image 1. Western blot analysis of extracts of various cell lines, using KRBOX4 antibody at 1:3000 dilution. Secondary antibody: HRP Goat Anti-Rabbit IgG (H+L) (ABIN1684268 and ABIN3020597) at 1:10000 dilution. Lysates/proteins: 25 µg per lane. Blocking buffer: 3% nonfat dry milk in TBST. Detection: ECL Basic Kit (RM00020). Exposure time: 90s.