

Datasheet for ABIN7268152

anti-KLF12 antibody

3 Images

[Go to Product page](#)

Overview

Quantity:	100 µL
Target:	KLF12
Reactivity:	Human
Host:	Rabbit
Clonality:	Polyclonal
Conjugate:	This KLF12 antibody is un-conjugated
Application:	Western Blotting (WB), Immunohistochemistry (IHC)

Product Details

Purpose:	KLF12 Rabbit pAb
Immunogen:	Recombinant protein of human KLF12.
Isotype:	IgG
Cross-Reactivity:	Mouse, Rat
Characteristics:	Polyclonal Antibodies
Purification:	Affinity purification

Target Details

Target:	KLF12
Alternative Name:	KLF12 (KLF12 Products)
Background:	Activator protein-2 alpha (AP-2 alpha) is a developmentally-regulated transcription factor and

Target Details

important regulator of gene expression during vertebrate development and carcinogenesis. The protein encoded by this gene is a member of the Kruppel-like zinc finger protein family and can repress expression of the AP-2 alpha gene by binding to a specific site in the AP-2 alpha gene promoter. Repression by the encoded protein requires binding with a corepressor, CtBP1. Two transcript variants encoding different isoforms have been found for this gene.,AP2REP, AP-2rep, HSPC122,KLF12

Molecular Weight:	44kDa
-------------------	-------

Gene ID:	11278
----------	-------

UniProt:	Q9Y4X4
----------	------------------------

Application Details

Application Notes:	WB,1:500 - 1:2000,IHC,1:50 - 1:200
--------------------	------------------------------------

Restrictions:	For Research Use only
---------------	-----------------------

Handling

Format:	Liquid
---------	--------

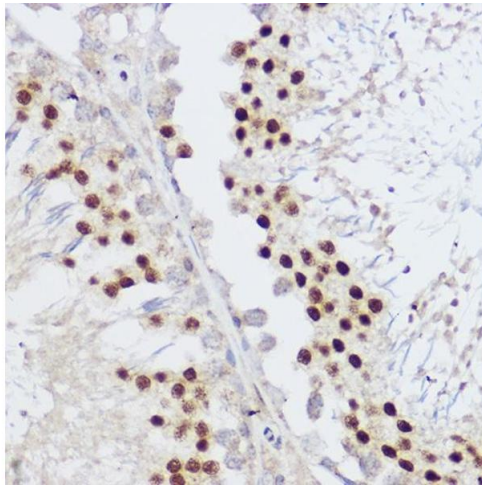
Buffer:	PBS with 0.02 % sodium azide,50 % glycerol, pH 7.3.
---------	---

Preservative:	Sodium azide
---------------	--------------

Precaution of Use:	This product contains Sodium azide: a POISONOUS AND HAZARDOUS SUBSTANCE which should be handled by trained staff only.
--------------------	--

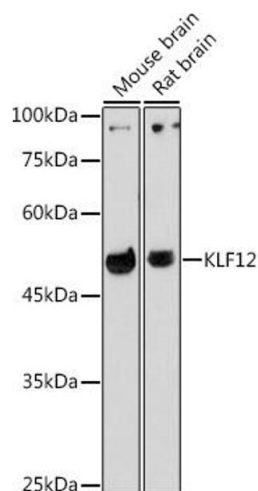
Storage:	-20 °C
----------	--------

Storage Comment:	Store at -20°C. Avoid freeze / thaw cycles.
------------------	---



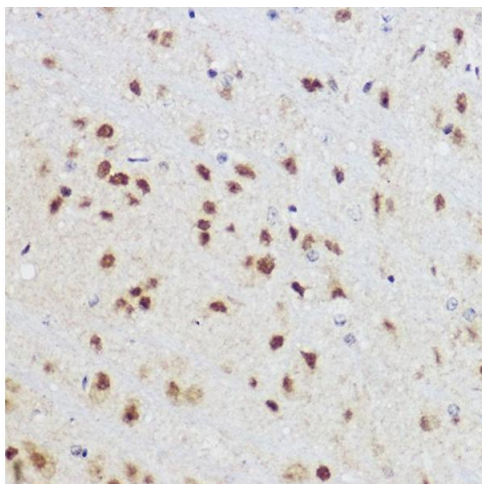
Immunohistochemistry

Image 1. Immunohistochemistry of paraffin-embedded rat testis using KLF12 antibody (ABIN7268152) at dilution of 1:100 (40x lens). Perform high pressure antigen retrieval with 10 mM citrate buffer pH 6.0 before commencing with IHC staining protocol.



Western Blotting

Image 2. Western blot analysis of extracts of various cell lines, using KLF12 antibody (ABIN7268152) at 1:1000 dilution. Secondary antibody: HRP Goat Anti-Rabbit IgG (H+L) (ABIN1684268 and ABIN3020597) at 1:10000 dilution. Lysates/proteins: 25 µg per lane. Blocking buffer: 3 % nonfat dry milk in TBST. Detection: ECL Basic Kit (RM00020). Exposure time: 90s.



Immunohistochemistry

Image 3. Immunohistochemistry of paraffin-embedded mouse brain using KLF12 antibody (ABIN7268152) at dilution of 1:100 (40x lens). Perform high pressure antigen retrieval with 10 mM citrate buffer pH 6.0 before commencing with IHC staining protocol.