



[Go to Product page](#)

Datasheet for ABIN7268155
anti-KLF2 antibody (AA 50-150)

1 Image

Overview

Quantity:	100 µL
Target:	KLF2
Binding Specificity:	AA 50-150
Reactivity:	Human
Host:	Rabbit
Clonality:	Polyclonal
Conjugate:	This KLF2 antibody is un-conjugated
Application:	Western Blotting (WB), Immunohistochemistry (IHC), Immunofluorescence (IF)

Product Details

Purpose:	KLF2 Rabbit pAb
Immunogen:	A synthetic peptide corresponding to a sequence within amino acids 50-150 of human KLF2 (NP_057354.1).
Sequence:	SMGLDGLGAE AAPEPPPPPP PPAFYYPEPG APPYSAPAG GLVSELLRPE LDAPLGPALH GRFLLAPPGR LVKAEPPEAD GGGGYGCAPG LTRGPRGLKR E
Isotype:	IgG
Cross-Reactivity:	Human, Mouse, Rat
Characteristics:	Polyclonal Antibodies
Purification:	Affinity purification

Target Details

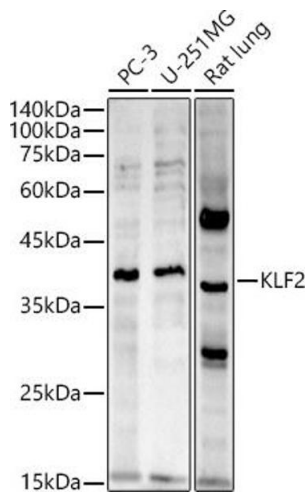
Target:	KLF2
Alternative Name:	KLF2 (KLF2 Products)
Background:	This gene encodes a protein that belongs to the Kruppel family of transcription factors. The encoded zinc finger protein is expressed early in mammalian development and is found in many different cell types. The protein acts to bind the CACCC box found in the promoter of target genes to activate their transcription. It plays a role in many processes during development and disease including adipogenesis, embryonic erythropoiesis, epithelial integrity, inflammation and t-cell viability.,KLF2,LKLF,Epigenetics & Nuclear Signaling,Transcription Factors,Cancer,Invasion and Metastasis,Cardiovascular,Angiogenesis,Angiogenic inhibitory factors,Heart,KLF2
Molecular Weight:	37kDa
Gene ID:	10365
UniProt:	Q9Y5W3

Application Details

Application Notes:	WB,1:500 - 1:2000,IHC,1:50 - 1:200,IF,1:50 - 1:200
Restrictions:	For Research Use only

Handling

Format:	Liquid
Buffer:	PBS with 0.02 % sodium azide,50 % glycerol, pH 7.3.
Preservative:	Sodium azide
Precaution of Use:	This product contains Sodium azide: a POISONOUS AND HAZARDOUS SUBSTANCE which should be handled by trained staff only.
Storage:	-20 °C
Storage Comment:	Store at -20°C. Avoid freeze / thaw cycles.



Western Blotting

Image 1. Western blot analysis of extracts of various cell lines, using KLF2 antibody (ABIN7268155) at 1:2720 dilution. Secondary antibody: HRP Goat Anti-Rabbit IgG (H+L) (ABIN1684268 and ABIN3020597) at 1:10000 dilution. Lysates/proteins: 25 µg per lane. Blocking buffer: 3 % nonfat dry milk in TBST. Detection: ECL Basic Kit (RM00020). Exposure time: 90s.