



Datasheet for ABIN7268158  
**anti-KLF8 antibody (AA 210-280)**



[Go to Product page](#)

3 Images

Overview

Quantity:	100 µL
Target:	KLF8
Binding Specificity:	AA 210-280
Reactivity:	Human
Host:	Rabbit
Clonality:	Polyclonal
Conjugate:	This KLF8 antibody is un-conjugated
Application:	Western Blotting (WB), Immunofluorescence (IF)

Product Details

Purpose:	KLF8 Rabbit pAb
Immunogen:	Recombinant fusion protein containing a sequence corresponding to amino acids 210-280 of human KLF8 (NP_009181.2).
Sequence:	GKNAGSVKVD PTSMSPLEIP SDSEESTIES GSSALQSLQG LQPEAAMAQ MQGEESLDLK RRRIHQCDFA G
Isotype:	IgG
Cross-Reactivity:	Human, Mouse, Rat
Characteristics:	Polyclonal Antibodies
Purification:	Affinity purification

## Target Details

---

Target:	KLF8
Alternative Name:	KLF8 ( <a href="#">KLF8 Products</a> )
Background:	<p>This gene encodes a protein which is a member of the Sp/KLF family of transcription factors. Members of this family contain a C-terminal DNA-binding domain with three Kruppel-like zinc fingers. The encoded protein is thought to play an important role in the regulation of epithelial to mesenchymal transition, a process which occurs normally during development but also during metastasis. A pseudogene has been identified on chromosome 16. Alternative splicing results in multiple transcript variants.,KLF8,BKLF3,ZNF741,Epigenetics &amp; Nuclear Signaling,Transcription Factors,KLF8</p>
Molecular Weight:	26kDa/27kDa/30kDa/39kDa
Gene ID:	11279
UniProt:	<a href="#">O95600</a>

## Application Details

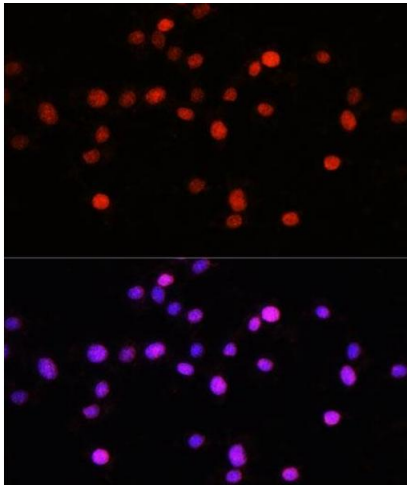
---

Application Notes:	WB,1:500 - 1:2000,IF,1:50 - 1:200
Restrictions:	For Research Use only

## Handling

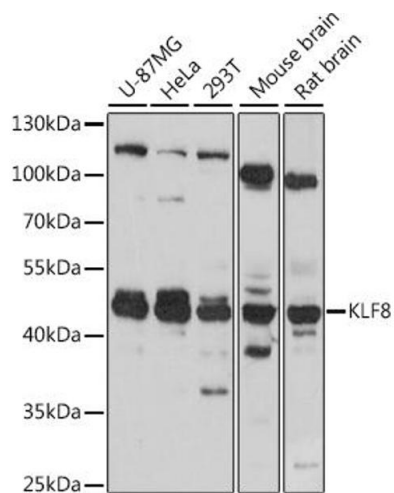
---

Format:	Liquid
Buffer:	PBS with 0.02 % sodium azide,50 % glycerol, pH 7.3.
Preservative:	Sodium azide
Precaution of Use:	This product contains Sodium azide: a POISONOUS AND HAZARDOUS SUBSTANCE which should be handled by trained staff only.
Storage:	-20 °C
Storage Comment:	Store at -20°C. Avoid freeze / thaw cycles.



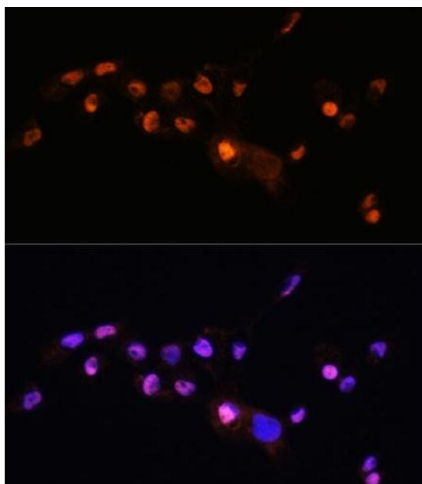
### Immunofluorescence

**Image 1.** Immunofluorescence analysis of L929 cells using KLF8 antibody (ABIN7268158) at dilution of 1:100. Blue: DAPI for nuclear staining.



### Western Blotting

**Image 2.** Western blot analysis of extracts of various cell lines, using KLF8 antibody (ABIN7268158) at 1:1000 dilution. Secondary antibody: HRP Goat Anti-Rabbit IgG (H+L) (ABIN1684268 and ABIN3020597) at 1:10000 dilution. Lysates/proteins: 25 µg per lane. Blocking buffer: 3 % nonfat dry milk in TBST. Detection: ECL Basic Kit (RM00020). Exposure time: 10s.



### Immunofluorescence

**Image 3.** Immunofluorescence analysis of cells using KLF8 antibody (ABIN7268158) at dilution of 1:100. Blue: DAPI for nuclear staining.