

Datasheet for ABIN7268159
anti-LAGE3 antibody (AA 1-143)[Go to Product page](#)

1 Image

Overview

Quantity:	100 µL
Target:	LAGE3
Binding Specificity:	AA 1-143
Reactivity:	Human
Host:	Rabbit
Clonality:	Polyclonal
Conjugate:	This LAGE3 antibody is un-conjugated
Application:	Western Blotting (WB)

Product Details

Purpose:	LAGE3 Rabbit pAb
Immunogen:	Recombinant fusion protein containing a sequence corresponding to amino acids 1-143 of human LAGE3 (NP_006005.2).
Isotype:	IgG
Cross-Reactivity:	Human
Characteristics:	Polyclonal Antibodies
Purification:	Affinity purification

Target Details

Target:	LAGE3
---------	-------

Target Details

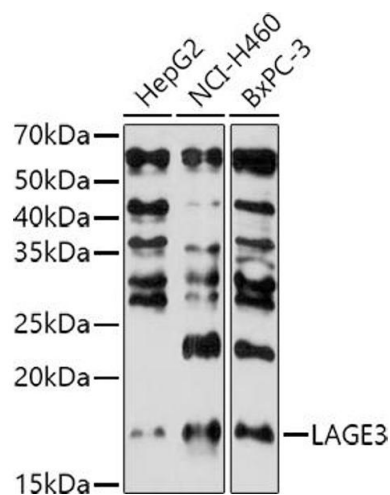
Alternative Name:	LAGE3 (LAGE3 Products)
Background:	This gene belongs to the ESO/LAGE gene family, members of which are clustered together on chromosome Xq28, and have similar exon-intron structures. Unlike the other family members which are normally expressed only in testis and activated in a wide range of human tumors, this gene is ubiquitously expressed in somatic tissues. The latter, combined with the finding that it is highly conserved in mouse and rat, suggests that the encoded protein is functionally important. An intronless pseudogene with high sequence similarity to this gene is located on chromosome 9.,CVG5, ESO3, Pcc1, ITBA2, GAMOS2, DXS9879E, DXS9951E,LAGE3
Molecular Weight:	14kDa
Gene ID:	8270
UniProt:	Q14657

Application Details

Application Notes:	WB,1:500 - 1:2000
Restrictions:	For Research Use only

Handling

Format:	Liquid
Buffer:	PBS with 0.02 % sodium azide,50 % glycerol, pH 7.3.
Preservative:	Sodium azide
Precaution of Use:	This product contains Sodium azide: a POISONOUS AND HAZARDOUS SUBSTANCE which should be handled by trained staff only.
Storage:	-20 °C
Storage Comment:	Store at -20°C. Avoid freeze / thaw cycles.



Western Blotting

Image 1. Western blot analysis of extracts of various cell lines, using L antibody (ABIN7268159) at 1:1000 dilution. Secondary antibody: HRP Goat Anti-Rabbit IgG (H+L) (ABIN1684268 and ABIN3020597) at 1:10000 dilution. Lysates/proteins: 25 µg per lane. Blocking buffer: 3 % nonfat dry milk in TBST. Detection: ECL Basic Kit (RM00020). Exposure time: 180s.