



[Go to Product page](#)

Datasheet for ABIN7268168  
**anti-LDHAL6B antibody (AA 1-80)**

2 Images

Overview

Quantity:	100 µL
Target:	LDHAL6B
Binding Specificity:	AA 1-80
Reactivity:	Human
Host:	Rabbit
Clonality:	Polyclonal
Conjugate:	This LDHAL6B antibody is un-conjugated
Application:	Western Blotting (WB), Immunofluorescence (IF)

Product Details

Purpose:	LDHAL6B Rabbit pAb
Immunogen:	Recombinant fusion protein containing a sequence corresponding to amino acids 1-80 of human LDHAL6B (NP_149972.1).
Sequence:	MSWTVPVVRA SQRVSSVGAN FLCLGMALCP RQATRIPLNG TWLFTPVSKM ATVKSELIER FTSEKPVHHS KVSIIGTGSV
Isotype:	IgG
Cross-Reactivity:	Mouse, Rat
Characteristics:	Polyclonal Antibodies
Purification:	Affinity purification

## Target Details

Target:	LDHAL6B
Alternative Name:	LDHAL6B ( <a href="#">LDHAL6B Products</a> )
Background:	LDHAL6B,LDH6B,LDHAL6,LDHL,Signal Transduction,Endocrine & Metabolism,LDHAL6B
Molecular Weight:	41kDa
Gene ID:	92483
UniProt:	<a href="#">Q9BYZ2</a>

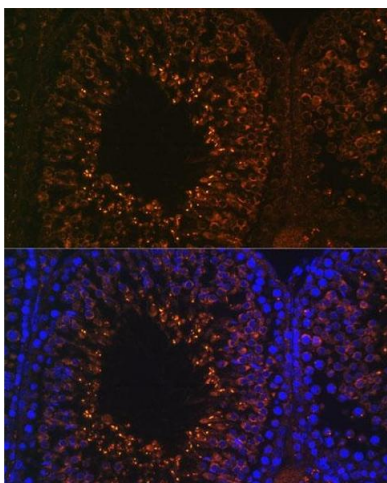
## Application Details

Application Notes:	WB,1:500 - 1:2000,IF,1:50 - 1:200
Restrictions:	For Research Use only

## Handling

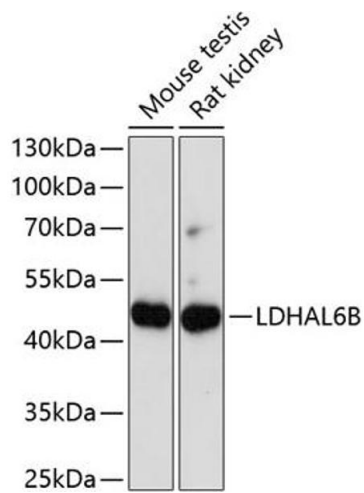
Format:	Liquid
Buffer:	PBS with 0.02 % sodium azide,50 % glycerol, pH 7.3.
Preservative:	Sodium azide
Precaution of Use:	This product contains Sodium azide: a POISONOUS AND HAZARDOUS SUBSTANCE which should be handled by trained staff only.
Storage:	-20 °C
Storage Comment:	Store at -20°C. Avoid freeze / thaw cycles.

## Images



### Immunofluorescence

**Image 1.** Immunofluorescence analysis of rat testis using LDHB antibody (ABIN7268168) at dilution of 1:100. Blue: DAPI for nuclear staining.



### Western Blotting

**Image 2.** Western blot analysis of extracts of various cell lines, using LDHB antibody (ABIN7268168) at 1:1000 dilution. Secondary antibody: HRP Goat Anti-Rabbit IgG (H+L) (ABIN1684268 and ABIN3020597) at 1:10000 dilution. Lysates/proteins: 25 µg per lane. Blocking buffer: 3 % nonfat dry milk in TBST. Detection: ECL Basic Kit (RM00020). Exposure time: 90s.