



[Go to Product page](#)

Datasheet for ABIN7268183
anti-LAMa4 antibody (AA 1-100)

1 Image

Overview

Quantity:	100 µL
Target:	LAMa4
Binding Specificity:	AA 1-100
Reactivity:	Human
Host:	Rabbit
Clonality:	Polyclonal
Conjugate:	This LAMa4 antibody is un-conjugated
Application:	Western Blotting (WB)

Product Details

Purpose:	LAMA4 Rabbit pAb
Immunogen:	A synthetic peptide corresponding to a sequence within amino acids 1-100 of human LAMA4 (NP_001098678.1).
Sequence:	MALSSAWRSV LPLWLLWSAA CSRAASGDDN AFPFDIEGSS AVGRQDPPET SEPRVALGRL PPAAEVQCPC HCHPAGAPAP PRAVPHSSFS LSPPLSSPQC
Isotype:	IgG
Cross-Reactivity:	Human
Characteristics:	Polyclonal Antibodies
Purification:	Affinity purification

Target Details

Target: LAMa4

Alternative Name: LAMA4 ([LAMA4 Products](#))

Background: Laminins, a family of extracellular matrix glycoproteins, are the major noncollagenous constituent of basement membranes. They have been implicated in a wide variety of biological processes including cell adhesion, differentiation, migration, signaling, neurite outgrowth and metastasis. Laminins are composed of 3 non identical chains: laminin alpha, beta and gamma (formerly A, B1, and B2, respectively) and they form a cruciform structure consisting of 3 short arms, each formed by a different chain, and a long arm composed of all 3 chains. Each laminin chain is a multidomain protein encoded by a distinct gene. Several isoforms of each chain have been described. Different alpha, beta and gamma chain isomers combine to give rise to different heterotrimeric laminin isoforms which are designated by Arabic numerals in the order of their discovery, i.e. alpha1beta1gamma1 heterotrimer is laminin 1. This gene encodes the alpha chain isoform laminin, alpha 4. The domain structure of alpha 4 is similar to that of alpha 3, both of which resemble truncated versions of alpha 1 and alpha 2, in that approximately 1,200 residues at the N-terminus (domains IV, V and VI) have been lost. Laminin, alpha 4 contains the C-terminal G domain which distinguishes all alpha chains from the beta and gamma chains. The RNA analysis from adult and fetal tissues revealed developmental regulation of expression, Tissue-specific utilization of alternative polyA-signal has been described in literature.,LAMA4,CMD1JJ,LAMA3,LAMA4*-1,Signal Transduction,Cell Biology & Developmental Biology,Cell Adhesion,Cytoskeleton,Extracellular Matrix,Neuroscience,LAMA4

Molecular Weight: 12kDa/201kDa/202kDa

Gene ID: 3910

UniProt: [Q16363](#)

Pathways: [Brown Fat Cell Differentiation](#)

Application Details

Application Notes: WB,1:200 - 1:2000

Restrictions: For Research Use only

Handling

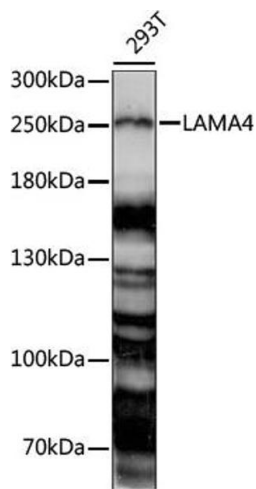
Format: Liquid

Buffer: PBS with 0.02 % sodium azide,50 % glycerol, pH 7.3.

Handling

Preservative:	Sodium azide
Precaution of Use:	This product contains Sodium azide: a POISONOUS AND HAZARDOUS SUBSTANCE which should be handled by trained staff only.
Storage:	-20 °C
Storage Comment:	Store at -20°C. Avoid freeze / thaw cycles.

Images



Western Blotting

Image 1. Western blot analysis of extracts of 293T cells, using L antibody (ABIN7268183) at 1:1000 dilution. Secondary antibody: HRP Goat Anti-Rabbit IgG (H+L) (ABIN1684268 and ABIN3020597) at 1:10000 dilution. Lysates/proteins: 25 µg per lane. Blocking buffer: 3 % nonfat dry milk in TBST. Detection: ECL Basic Kit (RM00020). Exposure time: 60s.