

Datasheet for ABIN7268186

anti-Laminin gamma 1 antibody (AA 1300-1609)



[Go to Product page](#)

5 Images

Overview

Quantity:	100 µL
Target:	Laminin gamma 1 (LAMC1)
Binding Specificity:	AA 1300-1609
Reactivity:	Human
Host:	Rabbit
Clonality:	Polyclonal
Conjugate:	This Laminin gamma 1 antibody is un-conjugated
Application:	Western Blotting (WB), Immunohistochemistry (IHC)

Product Details

Purpose:	LAMC1 Rabbit pAb
Immunogen:	Recombinant fusion protein containing a sequence corresponding to amino acids 1300-1609 of human LAMC1 (NP_002284.3).
Sequence:	IDQKLKDYED LREDMRGKEL EVKNLLEKGGK TEQQTADQLL ARADAAKALA EEAAKKGRDT LQEANDILNN LKDFDRRVND NKTAEEALR KIPAINQTIT EANEKTREAQ QALGSAADA TEAKNKAHEA ERIASAVQKN ATSTKAEAER TFAEVTDLN EVNNMLKQLQ EAEKELKRKQ DDADQDMMMA GMASQAAQEA EINARKAKNS VTSLLSIIND LLEQLGQLDT VDLNKLNEIE GTLNKAKDEM KVSDLDRKVS DLENEAKKQE AAIMDYNRDI EEIMKDIRNL EDIRKTLPSG CFNTPSIEKP
Isotype:	IgG
Cross-Reactivity:	Human, Mouse, Rat

Product Details

Characteristics: Polyclonal Antibodies

Purification: Affinity purification

Target Details

Target: Laminin gamma 1 (LAMC1)

Alternative Name: LAMC1 ([LAMC1 Products](#))

Background: Laminins, a family of extracellular matrix glycoproteins, are the major noncollagenous constituent of basement membranes. They have been implicated in a wide variety of biological processes including cell adhesion, differentiation, migration, signaling, neurite outgrowth and metastasis. Laminins, composed of 3 non identical chains: laminin alpha, beta and gamma. Some of the chains have been shown to differ with respect to their tissue distribution, presumably reflecting diverse functions in vivo. This gene encodes the gamma chain isoform laminin, gamma 1. The gamma 1 chain, formerly thought to be a beta chain, contains structural domains similar to beta chains, however, lacks the short alpha region separating domains I and II. The structural organization of this gene also suggested that it had diverged considerably from the beta chain genes. Embryos of transgenic mice in which both alleles of the gamma 1 chain gene were inactivated by homologous recombination, lacked basement membranes, indicating that laminin, gamma 1 chain is necessary for laminin heterotrimer assembly. It has been inferred by analogy with the strikingly similar 3' UTR sequence in mouse laminin gamma 1 cDNA, that multiple polyadenylation sites are utilized in human to generate the 2 different sized mRNAs (5.5 and 7.5 kb) seen on Northern analysis.,LAMC1,LAMB2,Signal Transduction,Cell Biology & Developmental Biology,Cell Adhesion,Cytoskeleton,Neuroscience,Neurodegenerative Diseases,LAMC1

Molecular Weight: 177kDa

Gene ID: 3915

UniProt: [P11047](#)

Application Details

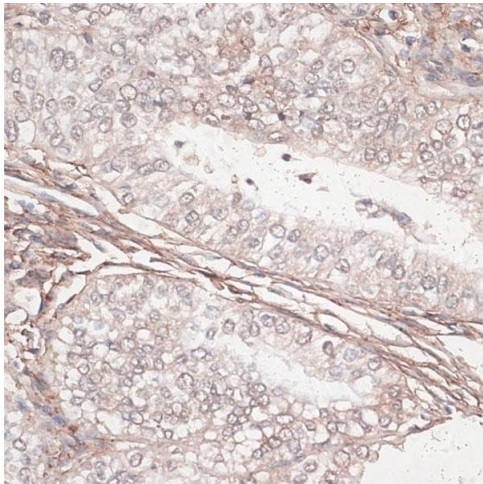
Application Notes: WB,1:500 - 1:2000,IHC,1:50 - 1:200

Restrictions: For Research Use only

Handling

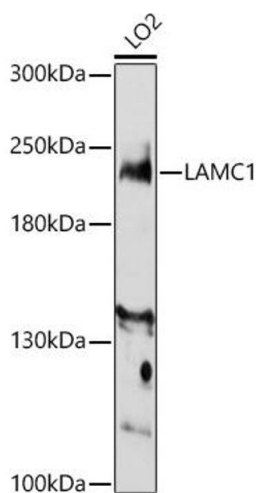
Format:	Liquid
Buffer:	PBS with 0.02 % sodium azide, 50 % glycerol, pH 7.3.
Preservative:	Sodium azide
Precaution of Use:	This product contains Sodium azide: a POISONOUS AND HAZARDOUS SUBSTANCE which should be handled by trained staff only.
Storage:	-20 °C
Storage Comment:	Store at -20°C. Avoid freeze / thaw cycles.

Images



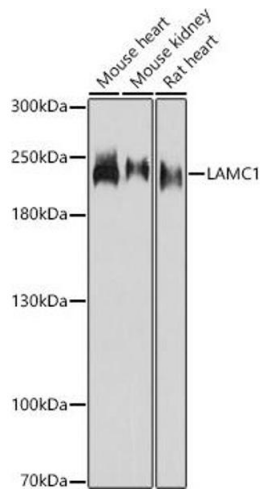
Immunohistochemistry

Image 1. Immunohistochemistry of paraffin-embedded human uterine cancer using L antibody (ABIN7268186) at dilution of 1:100 (40x lens). Perform microwave antigen retrieval with 10 mM PBS buffer pH 7.2 before commencing with IHC staining protocol.



Western Blotting

Image 2. Western blot analysis of extracts of LO2 cells, using L antibody (ABIN7268186) at 1:3000 dilution. Secondary antibody: HRP Goat Anti-Rabbit IgG (H+L) (ABIN1684268 and ABIN3020597) at 1:10000 dilution. Lysates/proteins: 25 µg per lane. Blocking buffer: 3 % nonfat dry milk in TBST. Detection: ECL Enhanced Kit (RM00021). Exposure time: 30s.



Western Blotting

Image 3. Western blot analysis of extracts of various cell lines, using L antibody (ABIN7268186) at 1:3000 dilution. Secondary antibody: HRP Goat Anti-Rabbit IgG (H+L) (ABIN1684268 and ABIN3020597) at 1:10000 dilution. Lysates/proteins: 25 µg per lane. Blocking buffer: 3 % nonfat dry milk in TBST. Detection: ECL Basic Kit (RM00020). Exposure time: 90s.

Please check the [product details page](#) for more images. Overall 5 images are available for ABIN7268186.