



[Go to Product page](#)

Datasheet for ABIN7268190  
**anti-LTBP3 antibody (AA 1004-1303)**

1 Image

Overview

Quantity:	100 µL
Target:	LTBP3
Binding Specificity:	AA 1004-1303
Reactivity:	Human
Host:	Rabbit
Clonality:	Polyclonal
Conjugate:	This LTBP3 antibody is un-conjugated
Application:	Western Blotting (WB)

Product Details

Purpose:	LTBP3 Rabbit pAb
Immunogen:	Recombinant fusion protein containing a sequence corresponding to amino acids 1004-1303 of human LTBP3 (NP_001123616.1).
Sequence:	ICKEGKCVNT QPGYECYCKQ GFYYDGNLLE CVDVDECLDE SNCRNGVCEN TRGGYRCACT PPAEYSPAQR QCLSPEEMDV DECQDPAACR PGRCVNLPGS YRCECRPPWV PGPSGRDCQL PESPAERAPE RRDVCWSQRG EDGMCAGPLA GPALTFDDCC CRQGRGWGAQ CRPCPPRGAG SHCPTSQSES NSFWDTSPLL LGKPPRDEDS SEEDSDECRC VSGRCVPRPG GAVCECPGGF QLDASRARC V DIDECRELNQ RGLLCKSERC VNTSGSFRCV CKAGFARSRP HGACVPQRRR
Isotype:	IgG
Cross-Reactivity:	Human
Characteristics:	Polyclonal Antibodies

## Product Details

---

Purification: Affinity purification

## Target Details

---

Target: LTBP3

Alternative Name: LTBP3 ([LTBP3 Products](#))

Background: The protein encoded by this gene forms a complex with transforming growth factor beta (TGF-beta) proteins and may be involved in their subcellular localization. Activation of this complex requires removal of the encoded binding protein. This protein also may play a structural role in the extracellular matrix. Three transcript variants encoding different isoforms have been found for this gene.,LTBP3,DASS,LTBP-3,LTBP2,STHAG6,pp6425,LTBP3

Molecular Weight: 134kDa/139kDa

Gene ID: 4054

UniProt: [Q9NS15](#)

Pathways: [Growth Factor Binding](#)

## Application Details

---

Application Notes: WB,1:500 - 1:2000

Restrictions: For Research Use only

## Handling

---

Format: Liquid

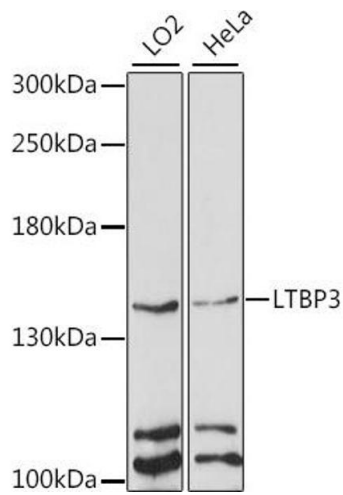
Buffer: PBS with 0.02 % sodium azide,50 % glycerol, pH 7.3.

Preservative: Sodium azide

Precaution of Use: This product contains Sodium azide: a POISONOUS AND HAZARDOUS SUBSTANCE which should be handled by trained staff only.

Storage: -20 °C

Storage Comment: Store at -20°C. Avoid freeze / thaw cycles.



### Western Blotting

**Image 1.** Western blot analysis of extracts of various cell lines, using LTBP3 antibody (ABIN7268190) at 1:1000 dilution. Secondary antibody: HRP Goat Anti-Rabbit IgG (H+L) (ABIN1684268 and ABIN3020597) at 1:10000 dilution. Lysates/proteins: 25 µg per lane. Blocking buffer: 3 % nonfat dry milk in TBST. Detection: ECL Enhanced Kit (RM00021). Exposure time: 30s.