

Datasheet for ABIN7268208

anti-LGMN antibody[Go to Product page](#)**1** Image

Overview

Quantity:	100 µL
Target:	LGMN
Reactivity:	Human
Host:	Rabbit
Clonality:	Monoclonal
Conjugate:	This LGMN antibody is un-conjugated
Application:	Western Blotting (WB)

Product Details

Purpose:	Legumain (LGMN) Rabbit mAb
Immunogen:	A synthesized peptide derived from human Legumain (LGMN) (LGMN)
Isotype:	IgG
Cross-Reactivity:	Human, Mouse
Characteristics:	Monoclonal Antibodies
Purification:	Affinity purification

Target Details

Target:	LGMN
Alternative Name:	LGMN (LGMN Products)
Background:	This gene encodes a cysteine protease that has a strict specificity for hydrolysis of asparaginyl

Target Details

bonds. This enzyme may be involved in the processing of bacterial peptides and endogenous proteins for MHC class II presentation in the lysosomal/endosomal systems. Enzyme activation is triggered by acidic pH and appears to be autocatalytic. Protein expression occurs after monocytes differentiate into dendritic cells. A fully mature, active enzyme is produced following lipopolysaccharide expression in mature dendritic cells. Overexpression of this gene may be associated with the majority of solid tumor types. This gene has a pseudogene on chromosome 13. Several alternatively spliced transcript variants have been described, but the biological validity of only two has been determined. These two variants encode the same isoform. [provided by RefSeq, Jul 2008],AEP, LGMN1, PRSC1,Cancer,Cell Biology & Developmental Biology,Cytoskeleton,Endocrine & Metabolism,Extracellular Matrix,Extracellular Matrix_Bone,Immunology & Inflammation,Signal Transduction,Ubiquitin,LGMN

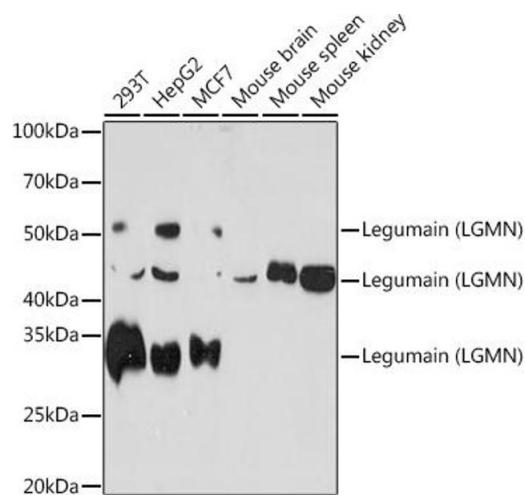
Molecular Weight:	36,57kDa
Gene ID:	5641
UniProt:	Q99538
Pathways:	Metabolism of Steroid Hormones and Vitamin D , Activation of Innate immune Response , Toll-Like Receptors Cascades

Application Details

Application Notes:	WB,1:500 - 1:2000
Restrictions:	For Research Use only

Handling

Format:	Liquid
Buffer:	PBS with 0.02 % sodium azide,0.05 % BSA,50 % glycerol, pH 7.3.
Preservative:	Sodium azide
Precaution of Use:	This product contains Sodium azide: a POISONOUS AND HAZARDOUS SUBSTANCE which should be handled by trained staff only.
Storage:	-20 °C
Storage Comment:	Store at -20°C. Avoid freeze / thaw cycles.



Western Blotting

Image 1. Western blot analysis of extracts of various cell lines, using Legumain (LGMN) (LGMN) Rabbit mAb (ABIN7268208) at 1:1000 dilution. Secondary antibody: HRP Goat Anti-Rabbit IgG (H+L) (ABIN1684268 and ABIN3020597) at 1:10000 dilution. Lysates/proteins: 25 µg per lane. Blocking buffer: 3 % nonfat dry milk in TBST. Detection: ECL Basic Kit (RM00020). Exposure time: 60s.