

Datasheet for ABIN7268210  
**anti-Leptin Receptor antibody**



[Go to Product page](#)

4 Images

## Overview

Quantity:	100 µL
Target:	Leptin Receptor (LEPR)
Reactivity:	Human
Host:	Rabbit
Clonality:	Monoclonal
Conjugate:	This Leptin Receptor antibody is un-conjugated
Application:	Western Blotting (WB), Immunohistochemistry (IHC)

## Product Details

Purpose:	Leptin Receptor Rabbit mAb
Immunogen:	A synthesized peptide derived from human Leptin Receptor
Isotype:	IgG
Cross-Reactivity:	Human, Mouse, Rat
Characteristics:	Monoclonal Antibodies
Purification:	Affinity purification

## Target Details

Target:	Leptin Receptor (LEPR)
Alternative Name:	LEPR ( <a href="#">LEPR Products</a> )
Background:	The protein encoded by this gene belongs to the gp130 family of cytokine receptors that are

## Target Details

known to stimulate gene transcription via activation of cytosolic STAT proteins. This protein is a receptor for leptin (an adipocyte-specific hormone that regulates body weight), and is involved in the regulation of fat metabolism, as well as in a novel hematopoietic pathway that is required for normal lymphopoiesis. Mutations in this gene have been associated with obesity and pituitary dysfunction. Alternatively spliced transcript variants encoding different isoforms have been described for this gene. It is noteworthy that this gene and LEPROT gene (GeneID:54741) share the same promoter and the first 2 exons, however, encode distinct proteins (PMID:9207021).[provided by RefSeq, Nov 2010],CD295,LEP-R,LEPRD,OB-R,OBR,LEPR,AMPK Signaling Pathway,Cancer,Cardiovascular,CDs,Cell Biology & Developmental Biology,Endocrine & Metabolism,Endocrine and metabolic diseases,Endocrine and metabolic diseases\_Obesity,Growth factors,Immunology & Inflammation,Lipid Metabolism,Lipids,Lipids\_Fatty Acids,Signal Transduction,LEPR

Molecular Weight: 96kDa/102kDa/103kDa/109kDa/132kDa

Gene ID: 3953

UniProt: [P48357](#)

Pathways: [JAK-STAT Signaling](#), [AMPK Signaling](#), [Feeding Behaviour](#)

## Application Details

Application Notes: WB,1:500 - 1:2000,IHC,1:50 - 1:200

Restrictions: For Research Use only

## Handling

Format: Liquid

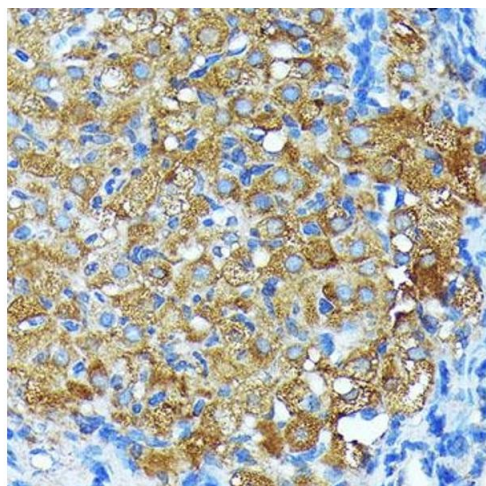
Buffer: PBS with 0.02 % sodium azide,0.05 % BSA,50 % glycerol, pH 7.3.

Preservative: Sodium azide

Precaution of Use: This product contains Sodium azide: a POISONOUS AND HAZARDOUS SUBSTANCE which should be handled by trained staff only.

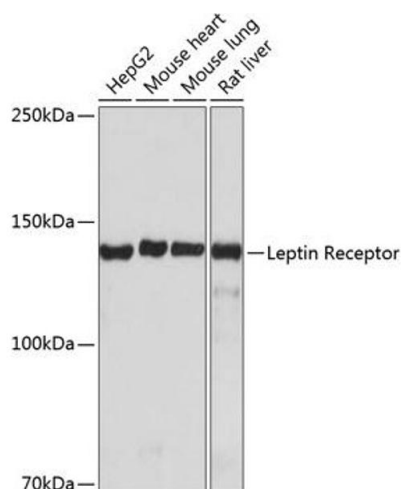
Storage: -20 °C

Storage Comment: Store at -20°C. Avoid freeze / thaw cycles.



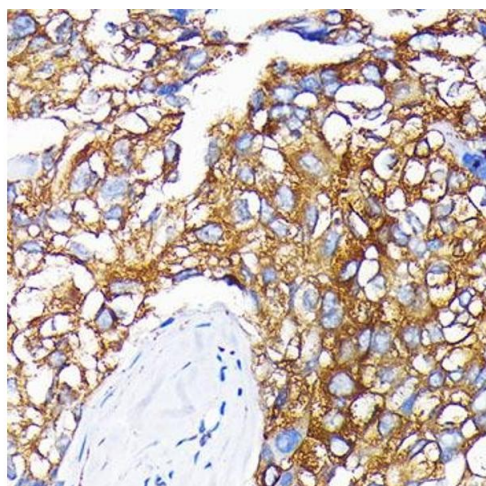
### Immunohistochemistry

**Image 1.** Immunohistochemistry of paraffin-embedded rat ovary using Leptin Receptor Rabbit mAb (ABIN7268210) at dilution of 1:100 (40x lens). Perform microwave antigen retrieval with 10 mM PBS buffer pH 7.2 before commencing with IHC staining protocol.



### Western Blotting

**Image 2.** Western blot analysis of extracts of various cell lines, using Leptin Receptor antibody (ABIN7268210) at 1:1000 dilution. Secondary antibody: HRP Goat Anti-Rabbit IgG (H+L) (ABIN1684268 and ABIN3020597) at 1:10000 dilution. Lysates/proteins: 25 µg per lane. Blocking buffer: 3 % nonfat dry milk in TBST. Detection: ECL Basic Kit (RM00020). Exposure time: 1 min.



### Immunohistochemistry

**Image 3.** Immunohistochemistry of paraffin-embedded human liver cancer using Leptin Receptor Rabbit mAb (ABIN7268210) at dilution of 1:100 (40x lens). Perform microwave antigen retrieval with 10 mM PBS buffer pH 7.2 before commencing with IHC staining protocol.

Please check the [product details page](#) for more images. Overall 4 images are available for ABIN7268210.