



[Go to Product page](#)

Datasheet for ABIN7268214  
**anti-LRRFIP2 antibody (AA 150-340)**

2 Images

Overview

Quantity:	100 µL
Target:	LRRFIP2
Binding Specificity:	AA 150-340
Reactivity:	Human
Host:	Rabbit
Clonality:	Polyclonal
Conjugate:	This LRRFIP2 antibody is un-conjugated
Application:	Western Blotting (WB), Immunofluorescence (IF)

Product Details

Purpose:	LRRFIP2 Rabbit pAb
Immunogen:	Recombinant fusion protein containing a sequence corresponding to amino acids 150-340 of human LRRFIP2 (NP_060194.1).
Sequence:	VIEEQEEQMA EFYRENEEKS KELERQKHMC SVLQHKMEEL KEGLRQRDEL IEKHGLVIIP DGTPNGDVSH EPVAGAITVV SQEAAQVLES AGEGPLDVRL RKLAGEKEEL LSQIRKCLKLQ LEEERQKCSR NDGTVGDLAG LQNGSDLQFI EMQRDANRQI SEYKFKLSKA EQDITTLEQS ISRLEGQVLR Y
Isotype:	IgG
Cross-Reactivity:	Human, Mouse, Rat
Characteristics:	Polyclonal Antibodies

## Product Details

---

Purification: Affinity purification

## Target Details

---

Target: LRRFIP2

Alternative Name: LRRFIP2 ([LRRFIP2 Products](#))

Background: The protein encoded by this gene, along with MYD88, binds to the cytosolic tail of toll-like receptor 4 (TLR4), which results in activation of nuclear factor kappa B signaling. The ubiquitin-like protein FAT10 prevents the interaction of the encoded protein and TLR4, thereby inactivating the nuclear factor kappa B signaling pathway. In addition, this protein can downregulate the NLRP3 inflammasome by recruiting the caspase-1 inhibitor Flightless-I to the inflammasome complex.,LRRFIP2,HUFI-2,Epigenetics & Nuclear Signaling,Signal Transduction,Immunology & Inflammation,Toll-like Receptor Signaling Pathway,Cell Intrinsic Innate Immunity Signaling Pathway,TLR Signaling,Stem Cells,LRRFIP2

Gene ID: 9209

UniProt: [Q9Y608](#)

## Application Details

---

Application Notes: WB,1:500 - 1:2000,IF,1:50 - 1:200

Restrictions: For Research Use only

## Handling

---

Format: Liquid

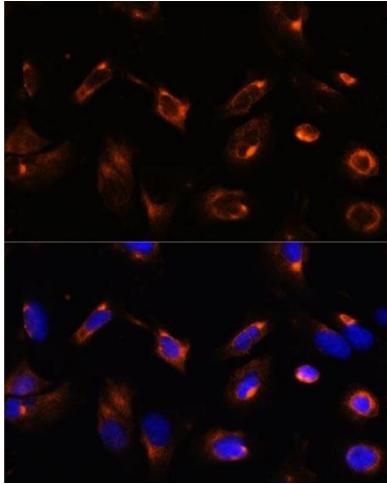
Buffer: PBS with 0.02 % sodium azide,50 % glycerol, pH 7.3.

Preservative: Sodium azide

Precaution of Use: This product contains Sodium azide: a POISONOUS AND HAZARDOUS SUBSTANCE which should be handled by trained staff only.

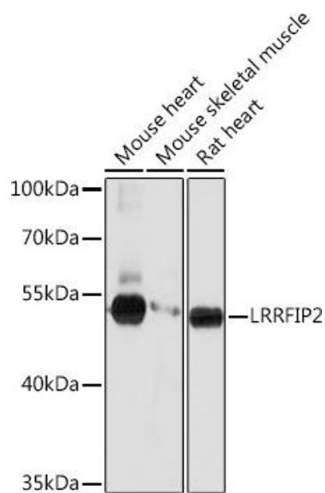
Storage: -20 °C

Storage Comment: Store at -20°C. Avoid freeze / thaw cycles.



### Immunofluorescence

**Image 1.** Immunofluorescence analysis of U-2 OS cells using LRRFIP2 antibody (ABIN7268214) at dilution of 1:100. Blue: DAPI for nuclear staining.



### Western Blotting

**Image 2.** Western blot analysis of extracts of various cell lines, using LRRFIP2 Rabbit pAb (ABIN7268214) at 1:1000 dilution. Secondary antibody: HRP Goat Anti-Rabbit IgG (H+L) (ABIN1684268 and ABIN3020597) at 1:10000 dilution. Lysates/proteins: 25 µg per lane. Blocking buffer: 3 % nonfat dry milk in TBST. Detection: ECL Basic Kit (RM00020). Exposure time: 5s.