



[Go to Product page](#)

Datasheet for ABIN7268218
anti-LRRC4C antibody (AA 450-520)

1 Image

Overview

Quantity:	100 µL
Target:	LRRC4C
Binding Specificity:	AA 450-520
Reactivity:	Human
Host:	Rabbit
Clonality:	Polyclonal
Conjugate:	This LRRC4C antibody is un-conjugated
Application:	Western Blotting (WB)

Product Details

Purpose:	LRRC4C Rabbit pAb
Immunogen:	Recombinant fusion protein containing a sequence corresponding to amino acids 450-520 of human LRRC4C (NP_065980.1).
Sequence:	PFSYFSTVTV ETMEPSQDEA RTTDNNVGPT PVVDWETTNV TTSLTTPQSTR STEKTFTIPV TDINSGIPGI D
Isotype:	IgG
Cross-Reactivity:	Rat
Characteristics:	Polyclonal Antibodies
Purification:	Affinity purification

Target Details

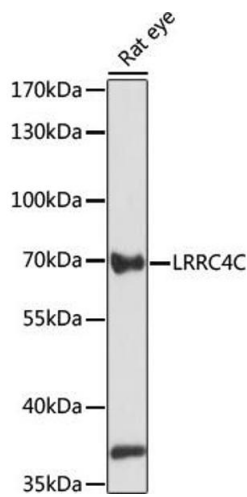
Target:	LRRC4C
Alternative Name:	LRRC4C (LRRC4C Products)
Background:	NGL1 is a specific binding partner for netrin G1 (NTNG1, MIM 608818), which is a member of the netrin family of axon guidance molecules (Lin et al., 2003 [PubMed 14595443]),LRRC4C,NGL-1,NGL1,Neuroscience,Cell Type Marker,Neuron marker,Axon marker,LRRC4C
Molecular Weight:	71kDa
Gene ID:	57689
UniProt:	Q9HCJ2
Pathways:	Synaptic Membrane

Application Details

Application Notes:	WB,1:200 - 1:2000
Restrictions:	For Research Use only

Handling

Format:	Liquid
Buffer:	PBS with 0.02 % sodium azide,50 % glycerol, pH 7.3.
Preservative:	Sodium azide
Precaution of Use:	This product contains Sodium azide: a POISONOUS AND HAZARDOUS SUBSTANCE which should be handled by trained staff only.
Storage:	-20 °C
Storage Comment:	Store at -20°C. Avoid freeze / thaw cycles.



Western Blotting

Image 1. Western blot analysis of extracts of rat eye, using LRRC4C antibody (ABIN7268218) at 1:1000 dilution. Secondary antibody: HRP Goat Anti-Rabbit IgG (H+L) (ABIN1684268 and ABIN3020597) at 1:10000 dilution. Lysates/proteins: 25 µg per lane. Blocking buffer: 3 % nonfat dry milk in TBST. Detection: ECL Basic Kit (RM00020). Exposure time: 60s.