



[Go to Product page](#)

Datasheet for ABIN7268220
anti-LRRC59 antibody (AA 1-244)

1 Image

Overview

Quantity:	100 µL
Target:	LRRC59
Binding Specificity:	AA 1-244
Reactivity:	Human
Host:	Rabbit
Clonality:	Polyclonal
Conjugate:	This LRRC59 antibody is un-conjugated
Application:	Western Blotting (WB), Immunohistochemistry (IHC), Immunoprecipitation (IP)

Product Details

Purpose:	[KO Validated] LRRC59 Rabbit pAb
Immunogen:	Recombinant fusion protein containing a sequence corresponding to amino acids 1-244 of human LRRC59 (NP_060979.2).
Sequence:	MTKAGSKGGN LRDKLDGNEL DLSLSDLNEV PVKELAALPK ATILDLSCNK LTTLPSPDFCG LTHLVKLDLS KNKLQQLPAD FGRLVNLQHL DLLNNKLVTL PVSFAQLKNL KWLDLKDNPL DPVLAKVAGD CLDEKQCKQC ANKVLQHMKA VQADQERERQ RRLEVEREAE KKREAKQRAK EAQERELRKR EKAEEKERRR KEYDALKAAK REQEKPKPKE ANQAPKSKSG SRPRKPPPRK HTRS
Isotype:	IgG
Cross-Reactivity:	Human, Mouse, Rat
Characteristics:	Polyclonal Antibodies

Product Details

Purification: Affinity purification

Grade: KO Validated

Target Details

Target: LRRC59

Alternative Name: LRRC59 ([LRRC59 Products](#))

Background: Required for nuclear import of FGF1, but not that of FGF2. Might regulate nuclear import of exogenous FGF1 by facilitating interaction with the nuclear import machinery and by transporting cytosolic FGF1 to, and possibly through, the nuclear pores.,LRRC59,PRO1855,p34,Epigenetics & Nuclear Signaling,RNA Binding,Signal Transduction,LRRC59

Molecular Weight: 34kDa

Gene ID: 55379

UniProt: [Q96AG4](#)

Application Details

Application Notes: WB,1:500 - 1:2000,IHC,1:50 - 1:200,IP,1:50 - 1:100

Restrictions: For Research Use only

Handling

Format: Liquid

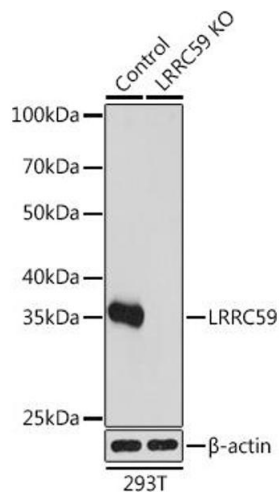
Buffer: PBS with 0.02 % sodium azide,50 % glycerol, pH 7.3.

Preservative: Sodium azide

Precaution of Use: This product contains Sodium azide: a POISONOUS AND HAZARDOUS SUBSTANCE which should be handled by trained staff only.

Storage: -20 °C

Storage Comment: Store at -20°C. Avoid freeze / thaw cycles.



Western Blotting

Image 1. Western blot analysis of extracts from normal (control) and LRRC59 knockout (KO) 293T cells, using LRRC59 antibody (ABIN7268220) at 1:1000 dilution. Secondary antibody: HRP Goat Anti-Rabbit IgG (H+L) (ABIN1684268 and ABIN3020597) at 1:10000 dilution. Lysates/proteins: 25 µg per lane. Blocking buffer: 3 % nonfat dry milk in TBST. Detection: ECL Basic Kit (RM00020). Exposure time: 1s.