

Datasheet for ABIN7268223
anti-LRRC61 antibody (AA 1-259)



[Go to Product page](#)

1 Image

Overview

Quantity:	100 µL
Target:	LRRC61
Binding Specificity:	AA 1-259
Reactivity:	Human
Host:	Rabbit
Clonality:	Polyclonal
Conjugate:	This LRRC61 antibody is un-conjugated
Application:	Western Blotting (WB)

Product Details

Purpose:	LRRC61 Rabbit pAb
Immunogen:	Recombinant fusion protein containing a sequence corresponding to amino acids 1-259 of human LRRC61 (NP_076431.1).
Sequence:	MDPPAEKPGE AGGLQITPQL LKSRTGEFSL ESILLKLRG LGLADLGCLG ECLGLEWLDL SGNALTHLGP LASLRQLAVL NVSNRLTGL EPLATCENLQ SLNAAGNLLA TPGQLQCLAG LPCLEYLRLR DPLARLSNPL CANPSYWAAV RELLPLGKVI DGERVIGRGS EFYQLCRDLD SSLRPSSSPG PRATEAQPWW EPGYWESWPS RSSSILEEAC RQFQDTLQEC WDLDRQASDS LAQAEQVLSS AGPTSSFVF
Isotype:	IgG
Cross-Reactivity:	Mouse, Rat
Characteristics:	Polyclonal Antibodies

Product Details

Purification: Affinity purification

Target Details

Target: LRRC61

Alternative Name: LRRC61 ([LRRC61 Products](#))

Background: LRRC61,HSPC295,Epigenetics & Nuclear Signaling,LRRC61

Molecular Weight: 28kDa

Gene ID: 65999

UniProt: [Q9BV99](#)

Application Details

Application Notes: WB,1:500 - 1:2000

Restrictions: For Research Use only

Handling

Format: Liquid

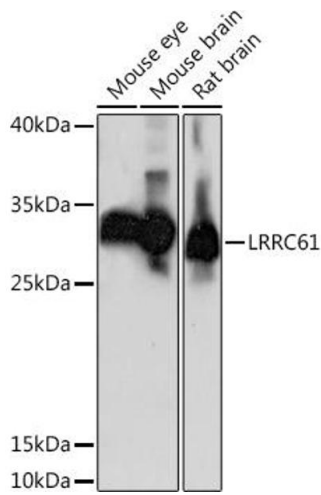
Buffer: PBS with 0.02 % sodium azide,50 % glycerol, pH 7.3.

Preservative: Sodium azide

Precaution of Use: This product contains Sodium azide: a POISONOUS AND HAZARDOUS SUBSTANCE which should be handled by trained staff only.

Storage: -20 °C

Storage Comment: Store at -20°C. Avoid freeze / thaw cycles.



Western Blotting

Image 1. Western blot analysis of extracts of various cell lines, using LRRC61 Rabbit pAb (ABIN7268223) at 1:1000 dilution. Secondary antibody: HRP Goat Anti-Rabbit IgG (H+L) (ABIN1684268 and ABIN3020597) at 1:10000 dilution. Lysates/proteins: 25 µg per lane. Blocking buffer: 3 % nonfat dry milk in TBST. Detection: ECL Basic Kit (RM00020). Exposure time: 15s.