



[Go to Product page](#)

Datasheet for ABIN7268225
anti-LETM1 antibody (AA 1-140)

1 Image

Overview

Quantity:	100 µL
Target:	LETM1
Binding Specificity:	AA 1-140
Reactivity:	Human
Host:	Rabbit
Clonality:	Polyclonal
Conjugate:	This LETM1 antibody is un-conjugated
Application:	Western Blotting (WB)

Product Details

Purpose:	LETM1 Rabbit pAb
Immunogen:	Recombinant fusion protein containing a sequence corresponding to amino acids 1-140 of human LETM1 (NP_036450.1).
Sequence:	MASILLRSCR GRAPARLPPP PRYTVPRGSP GDPAHLSCAS TLGLRNCLNV PFGCCTPIHP VYTSSRGDHL GCWALRPECL RIVSRAPWTS TSVG FVAVGP QCLPVRGWHS SRPVRDDSVV EKSLKSLKDK NKKLEEGGPV
Isotype:	IgG
Cross-Reactivity:	Human, Mouse, Rat
Characteristics:	Polyclonal Antibodies
Purification:	Affinity purification

Target Details

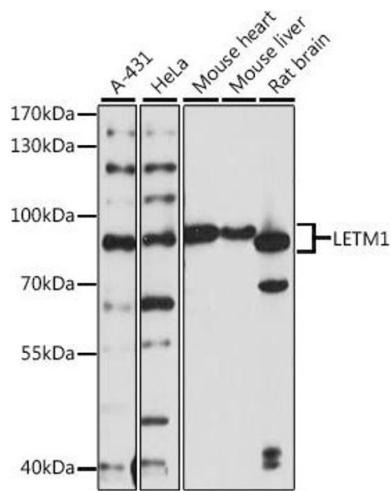
Target:	LETM1
Alternative Name:	LETM1 (LETM1 Products)
Background:	This gene encodes a protein that is localized to the inner mitochondrial membrane. The protein functions to maintain the mitochondrial tubular shapes and is required for normal mitochondrial morphology and cellular viability. Mutations in this gene cause Wolf-Hirschhorn syndrome, a complex malformation syndrome caused by the deletion of parts of the distal short arm of chromosome 4. Related pseudogenes have been identified on chromosomes 8, 15 and 19.,LETM1,Endocrine & Metabolism,Mitochondrial metabolism,Mitochondrial Biogenesis,Mitochondrial markers,LETM1
Molecular Weight:	29kDa/33kDa/83kDa
Gene ID:	3954
UniProt:	O95202

Application Details

Application Notes:	WB,1:500 - 1:2000
Restrictions:	For Research Use only

Handling

Format:	Liquid
Buffer:	PBS with 0.02 % sodium azide,50 % glycerol, pH 7.3.
Preservative:	Sodium azide
Precaution of Use:	This product contains Sodium azide: a POISONOUS AND HAZARDOUS SUBSTANCE which should be handled by trained staff only.
Storage:	-20 °C
Storage Comment:	Store at -20°C. Avoid freeze / thaw cycles.



Western Blotting

Image 1. Western blot analysis of extracts of various cell lines, using LETM1 antibody at 1:1000 dilution. Secondary antibody: HRP Goat Anti-Rabbit IgG (H+L) (ABIN1684268 and ABIN3020597) at 1:10000 dilution. Lysates/proteins: 25 µg per lane. Blocking buffer: 3% nonfat dry milk in TBST. Detection: ECL Basic Kit (RM00020). Exposure time: 30s.