



Datasheet for ABIN7268241  
**anti-LAIR2 antibody (AA 22-120)**



[Go to Product page](#)

3 Images

Overview

Quantity:	100 µL
Target:	LAIR2
Binding Specificity:	AA 22-120
Reactivity:	Human
Host:	Rabbit
Clonality:	Polyclonal
Conjugate:	This LAIR2 antibody is un-conjugated
Application:	Western Blotting (WB), Immunofluorescence (IF)

Product Details

Purpose:	LAIR2 Rabbit pAb
Immunogen:	Recombinant fusion protein containing a sequence corresponding to amino acids 22-120 of human LAIR2 (NP_002279.2).
Sequence:	QEGALPRPSI SAEPGTVISP GSHVTFMCRG PVGVQTFRLE REDRAKYKDS YNVFRLGPSE SEARFHIDSV SEGNAGLYRC LYYKPPGWSE HSDFLELLV
Isotype:	IgG
Cross-Reactivity:	Human, Mouse, Rat
Characteristics:	Polyclonal Antibodies
Purification:	Affinity purification

## Target Details

---

Target:	LAIR2
Alternative Name:	LAIR2 ( <a href="#">LAIR2 Products</a> )
Background:	The protein encoded by this gene is a member of the immunoglobulin superfamily. It was identified by its similarity to leukocyte-associated immunoglobulin-like receptor 1, a membrane-bound receptor that modulates innate immune response. The protein encoded by this locus is a soluble receptor that may play roles in both inhibition of collagen-induced platelet aggregation and vessel formation during placental implantation. This gene maps to a region of 19q13.4, termed the leukocyte receptor cluster, which contains 29 genes in the immunoglobulin superfamily. Alternatively spliced transcript variants have been described for this gene.,LAIR2,CD306,Immunology & Inflammation,CD markers,LAIR2
Molecular Weight:	14kDa/16kDa
Gene ID:	3904
UniProt:	<a href="#">Q6ISS4</a>

## Application Details

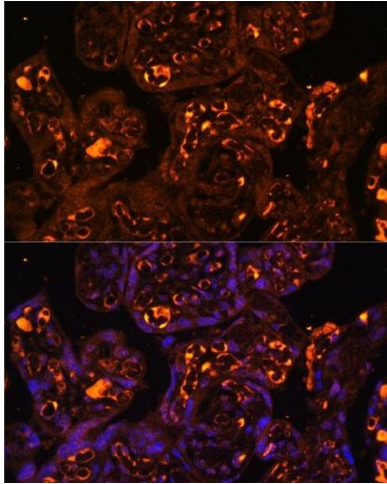
---

Application Notes:	WB,1:500 - 1:2000,IF,1:50 - 1:200
Restrictions:	For Research Use only

## Handling

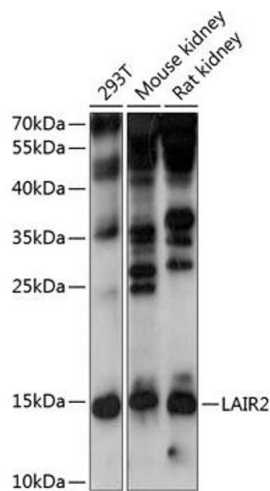
---

Format:	Liquid
Buffer:	PBS with 0.02 % sodium azide,50 % glycerol, pH 7.3.
Preservative:	Sodium azide
Precaution of Use:	This product contains Sodium azide: a POISONOUS AND HAZARDOUS SUBSTANCE which should be handled by trained staff only.
Storage:	-20 °C
Storage Comment:	Store at -20°C. Avoid freeze / thaw cycles.



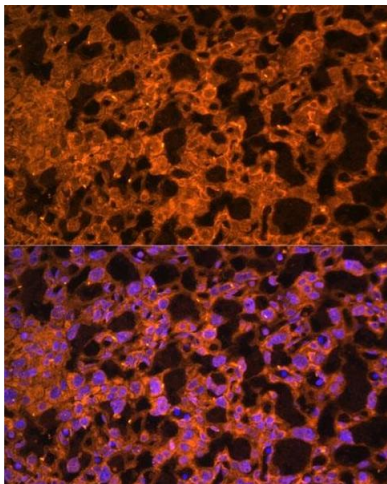
### Immunofluorescence

**Image 1.** Immunofluorescence analysis of human placenta using L antibody at dilution of 1:100. Blue: DAPI for nuclear staining.



### Western Blotting

**Image 2.** Western blot analysis of extracts of various cell lines, using L antibody at 1:1000 dilution. Secondary antibody: HRP Goat Anti-Rabbit IgG (H+L) (ABIN1684268 and ABIN3020597) at 1:10000 dilution. Lysates/proteins: 25 µg per lane. Blocking buffer: 3% nonfat dry milk in TBST. Detection: ECL Enhanced Kit (RM00021). Exposure time: 30s.



### Immunofluorescence

**Image 3.** Immunofluorescence analysis of mouse placenta using L antibody at dilution of 1:100. Blue: DAPI for nuclear staining.