

Datasheet for ABIN7268248  
**anti-LTC4S antibody (C-Term)**[Go to Product page](#)

## 1 Image

## Overview

Quantity:	100 µL
Target:	LTC4S
Binding Specificity:	C-Term
Reactivity:	Human
Host:	Rabbit
Clonality:	Polyclonal
Conjugate:	This LTC4S antibody is un-conjugated
Application:	Western Blotting (WB)

## Product Details

Purpose:	LTC4S Rabbit pAb
Immunogen:	A synthetic peptide corresponding to a sequence within amino acids 50 to the C-terminus of human LTC4S (NP_665874.1).
Sequence:	YRAQVNCSEY FPLFLATLWV AGIFFHEGAA ALGGLVYLFA RLRYFQGYAR SAQLRLAPLY ASARALWLLV ALAALGLLAH FLPAALRAAL LGRLRTLLPW A
Isotype:	IgG
Cross-Reactivity:	Human
Characteristics:	Polyclonal Antibodies
Purification:	Affinity purification

## Target Details

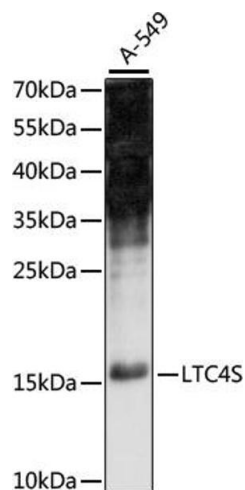
Target:	LTC4S
Alternative Name:	LTC4S ( <a href="#">LTC4S Products</a> )
Background:	<p>The MAPEG (Membrane Associated Proteins in Eicosanoid and Glutathione metabolism) family includes a number of human proteins, several of which are involved the production of leukotrienes. This gene encodes an enzyme that catalyzes the first step in the biosynthesis of cysteinyl leukotrienes, potent biological compounds derived from arachidonic acid.</p> <p>Leukotrienes have been implicated as mediators of anaphylaxis and inflammatory conditions such as human bronchial asthma. This protein localizes to the nuclear envelope and adjacent endoplasmic reticulum.,LTC4S,Cancer,Signal Transduction,Endocrine &amp; Metabolism,Lipid Metabolism,Immunology &amp; Inflammation,Cell Intrinsic Innate Immunity Signaling Pathway,LTC4S</p>
Molecular Weight:	16kDa
Gene ID:	4056
UniProt:	<a href="#">Q16873</a>
Pathways:	<a href="#">Cellular Response to Molecule of Bacterial Origin</a>

## Application Details

Application Notes:	WB,1:500 - 1:2000
Restrictions:	For Research Use only

## Handling

Format:	Liquid
Buffer:	PBS with 0.02 % sodium azide,50 % glycerol, pH 7.3.
Preservative:	Sodium azide
Precaution of Use:	This product contains Sodium azide: a POISONOUS AND HAZARDOUS SUBSTANCE which should be handled by trained staff only.
Storage:	-20 °C
Storage Comment:	Store at -20°C. Avoid freeze / thaw cycles.



### Western Blotting

**Image 1.** Western blot analysis of extracts of A-549 cells, using LTC4S antibody (ABIN7268248) at 1:1000 dilution. Secondary antibody: HRP Goat Anti-Rabbit IgG (H+L) (ABIN1684268 and ABIN3020597) at 1:10000 dilution. Lysates/proteins: 25 µg per lane. Blocking buffer: 3 % nonfat dry milk in TBST. Detection: ECL Enhanced Kit (RM00021). Exposure time: 90s.