



[Go to Product page](#)

Datasheet for ABIN7268249
anti-LI Cadherin antibody

5 Images

Overview

Quantity:	100 µL
Target:	LI Cadherin
Reactivity:	Human
Host:	Rabbit
Clonality:	Monoclonal
Conjugate:	This LI Cadherin antibody is un-conjugated
Application:	Western Blotting (WB), Immunohistochemistry (IHC), Immunofluorescence (IF)

Product Details

Purpose:	LI Cadherin/Cadherin-17 Rabbit mAb
Immunogen:	A synthesized peptide derived from human LI Cadherin/Cadherin-17
Isotype:	IgG
Cross-Reactivity:	Human, Mouse, Rat
Characteristics:	Monoclonal Antibodies
Purification:	Affinity purification

Target Details

Target:	LI Cadherin
Alternative Name:	CDH17 (LI Cadherin Products)
Background:	This gene is a member of the cadherin superfamily, genes encoding calcium-dependent,

Target Details

membrane-associated glycoproteins. The encoded protein is cadherin-like, consisting of an extracellular region, containing 7 cadherin domains, and a transmembrane region but lacking the conserved cytoplasmic domain. The protein is a component of the gastrointestinal tract and pancreatic ducts, acting as an intestinal proton-dependent peptide transporter in the first step in oral absorption of many medically important peptide-based drugs. The protein may also play a role in the morphological organization of liver and intestine. Alternative splicing results in multiple transcript variants. [provided by RefSeq, Jan 2009],CDH16, HPT-1, HPT1,Cell Adhesion,Cell Adhesion_Cadherins,Cell Biology & Developmental Biology,Cytoskeleton,Signal Transduction,CDH17

Molecular Weight: 120kDa

Gene ID: 1015

UniProt: [Q12864](#)

Application Details

Application Notes: WB,1:500 - 1:2000,IHC,1:50 - 1:200,IF,1:50 - 1:200

Restrictions: For Research Use only

Handling

Format: Liquid

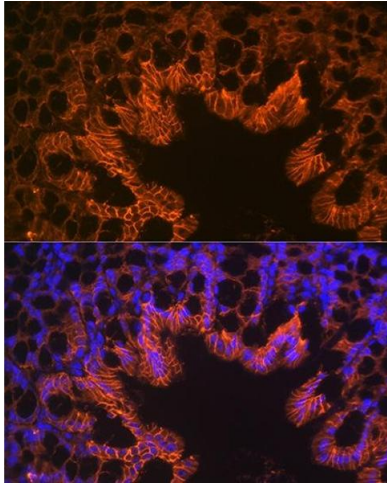
Buffer: PBS with 0.02 % sodium azide,0.05 % BSA,50 % glycerol, pH 7.3.

Preservative: Sodium azide

Precaution of Use: This product contains Sodium azide: a POISONOUS AND HAZARDOUS SUBSTANCE which should be handled by trained staff only.

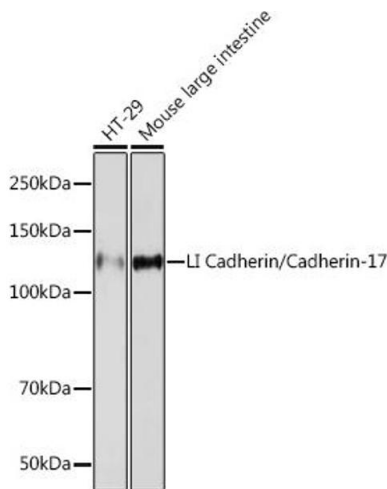
Storage: -20 °C

Storage Comment: Store at -20°C. Avoid freeze / thaw cycles.



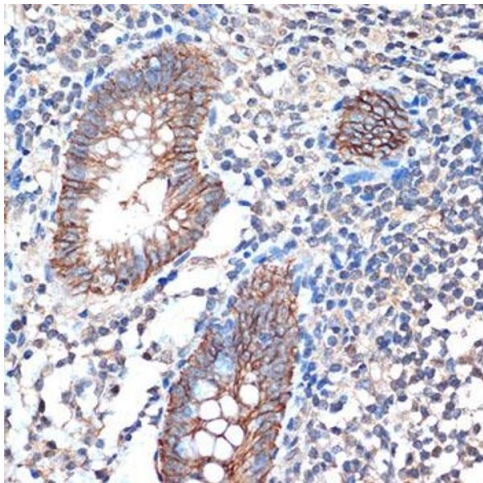
Immunofluorescence

Image 1. Immunofluorescence analysis of mouse large intestine using LI Cadherin/Cadherin-17 Rabbit mAb (ABIN7268249) at dilution of 1:100 (40x lens). Blue: DAPI for nuclear staining.



Western Blotting

Image 2. Western blot analysis of extracts of various cell lines, using LI Cadherin/Cadherin-17 Rabbit mAb (ABIN7268249) at 1:1000 dilution. Secondary antibody: HRP Goat Anti-Rabbit IgG (H+L) (ABIN1684268 and ABIN3020597) at 1:10000 dilution. Lysates/proteins: 25 µg per lane. Blocking buffer: 3% nonfat dry milk in TBST. Detection: ECL Basic Kit (RM00020). Exposure time: 90s.



Immunohistochemistry

Image 3. Immunohistochemistry of paraffin-embedded human appendix using LI Cadherin/Cadherin-17 Rabbit mAb (ABIN7268249) at dilution of 1:100 (40x lens). Perform microwave antigen retrieval with 10 mM Tris/EDTA buffer pH 9.0 before commencing with IHC staining protocol.

Please check the [product details page](#) for more images. Overall 5 images are available for ABIN7268249.