



Datasheet for ABIN7268257
anti-LMO2 antibody



[Go to Product page](#)

1 Image

Overview

Quantity:	100 µL
Target:	LMO2
Reactivity:	Human
Host:	Rabbit
Clonality:	Monoclonal
Conjugate:	This LMO2 antibody is un-conjugated
Application:	Western Blotting (WB)

Product Details

Purpose:	LMO2 Rabbit mAb
Immunogen:	A synthesized peptide derived from human LMO2
Isotype:	IgG
Cross-Reactivity:	Human
Characteristics:	Monoclonal Antibodies
Purification:	Affinity purification

Target Details

Target:	LMO2
Alternative Name:	LMO2 (LMO2 Products)
Background:	LMO2 encodes a cysteine-rich, two LIM-domain protein that is required for yolk sac

Target Details

erythropoiesis. The LMO2 protein has a central and crucial role in hematopoietic development and is highly conserved. The LMO2 transcription start site is located approximately 25 kb downstream from the 11p13 T-cell translocation cluster (11p13 ttc), where a number T-cell acute lymphoblastic leukemia-specific translocations occur. Alternative splicing results in multiple transcript variants encoding different isoforms.[provided by RefSeq, Nov 2008],RBTN2, RBTN1, RHOM2, TTG2,Blood,Cardiovascular,Epigenetics & Nuclear Signaling,LMO2

Molecular Weight: 18kDa

Gene ID: 4005

UniProt: [P25791](#)

Pathways: [Chromatin Binding](#)

Application Details

Application Notes: WB,1:500 - 1:2000

Restrictions: For Research Use only

Handling

Format: Liquid

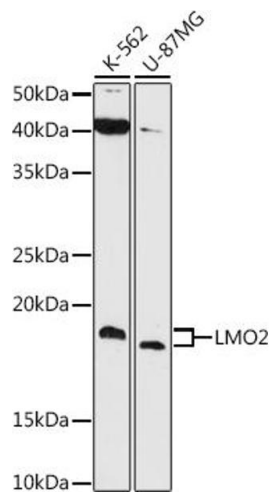
Buffer: PBS with 0.02 % sodium azide,0.05 % BSA,50 % glycerol, pH 7.3.

Preservative: Sodium azide

Precaution of Use: This product contains Sodium azide: a POISONOUS AND HAZARDOUS SUBSTANCE which should be handled by trained staff only.

Storage: -20 °C

Storage Comment: Store at -20°C. Avoid freeze / thaw cycles.



Western Blotting

Image 1. Western blot analysis of extracts of various cell lines, using LMO2 antibody (ABIN7268257) at 1:1000 dilution. Secondary antibody: HRP Goat Anti-Rabbit IgG (H+L) (ABIN1684268 and ABIN3020597) at 1:10000 dilution. Lysates/proteins: 25 µg per lane. Blocking buffer: 3 % nonfat dry milk in TBST. Detection: ECL Basic Kit (RM00020). Exposure time: 90s.