

Datasheet for ABIN7268261  
**anti-LHX2 antibody**



[Go to Product page](#)

1 Image

## Overview

|              |                                     |
|--------------|-------------------------------------|
| Quantity:    | 100 µL                              |
| Target:      | LHX2                                |
| Reactivity:  | Human                               |
| Host:        | Rabbit                              |
| Clonality:   | Monoclonal                          |
| Conjugate:   | This LHX2 antibody is un-conjugated |
| Application: | Western Blotting (WB)               |

## Product Details

|                   |                                    |
|-------------------|------------------------------------|
| Purpose:          | LHX2 Rabbit mAb                    |
| Immunogen:        | Recombinant protein of human LHX2. |
| Isotype:          | IgG                                |
| Cross-Reactivity: | Human, Mouse, Rat                  |
| Characteristics:  | Monoclonal Antibodies              |
| Purification:     | Affinity purification              |

## Target Details

|                   |   |
|-------------------|---|
| Target:           | LHX2  |
| Alternative Name: | LHX2 ( <a href="#">LHX2 Products</a> )  |
| Background:       | This gene encodes a protein belonging to a large protein family, members of which carry the |

## Target Details

---

LIM domain, a unique cysteine-rich zinc-binding domain. The encoded protein may function as a transcriptional regulator. The protein can recapitulate or rescue phenotypes in *Drosophila* caused by a related protein, suggesting conservation of function during evolution.,LHX2, LH2, hLhx2, LIM homeobox 2,Epigenetics & Nuclear Signaling,Transcription Factors,Neuroscience,Cell Type Marker,Stem Cells,Hematopoietic Progenitors,Neural Stem Cells,Neural Stem Cell marker,LHX2

---

Molecular Weight: 44kDa

---

Gene ID: 9355

---

UniProt: [P50458](#)

---

Pathways: [Tube Formation](#)

## Application Details

---

---

Application Notes: WB,1:500 - 1:2000

---

Restrictions: For Research Use only

## Handling

---

---

Format: Liquid

---

Buffer: PBS with 0.02 % sodium azide,0.05 % BSA,50 % glycerol, pH 7.3.

---

Preservative: Sodium azide

---

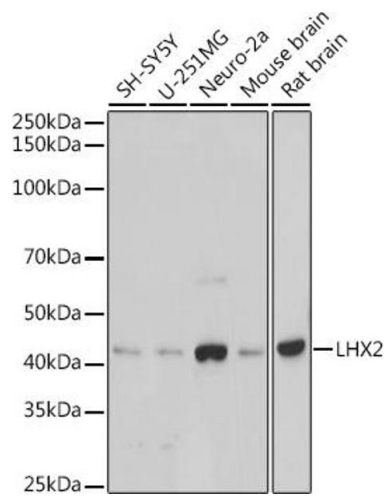
Precaution of Use: This product contains Sodium azide: a POISONOUS AND HAZARDOUS SUBSTANCE which should be handled by trained staff only.

---

Storage: -20 °C

---

Storage Comment: Store at -20°C. Avoid freeze / thaw cycles.



### Western Blotting

**Image 1.** Western blot analysis of extracts of various cell lines, using LHX2 antibody (ABIN7268261) at 1:1000 dilution. Secondary antibody: HRP Goat Anti-Rabbit IgG (H+L) (ABIN1684268 and ABIN3020597) at 1:10000 dilution. Lysates/proteins: 25 µg per lane. Blocking buffer: 3 % nonfat dry milk in TBST. Detection: ECL Basic Kit (RM00020). Exposure time: 90s.