

Datasheet for ABIN7268269
anti-LIN7C antibody (AA 1-70)[Go to Product page](#)

1 Image

Overview

Quantity:	100 µL
Target:	LIN7C
Binding Specificity:	AA 1-70
Reactivity:	Human
Host:	Rabbit
Clonality:	Polyclonal
Conjugate:	This LIN7C antibody is un-conjugated
Application:	Western Blotting (WB)

Product Details

Purpose:	LIN7C Rabbit pAb
Immunogen:	Recombinant fusion protein containing a sequence corresponding to amino acids 1-70 of human LIN7C (NP_060832.1).
Sequence:	MAALGEPVRL ERDICRAIEL LEKLQRSGEV PPQKLQALQR VLQSEFCNAV REVYEHVYET VDISSSPEVR
Isotype:	IgG
Cross-Reactivity:	Human, Mouse, Rat
Characteristics:	Polyclonal Antibodies
Purification:	Affinity purification

Target Details

Target:	LIN7C
Alternative Name:	LIN7C (LIN7C Products)
Background:	Plays a role in establishing and maintaining the asymmetric distribution of channels and receptors at the plasma membrane of polarized cells. Forms membrane-associated multiprotein complexes that may regulate delivery and recycling of proteins to the correct membrane domains. The tripartite complex composed of LIN7 (LIN7A, LIN7B or LIN7C, CASK and APBA1 associates with the motor protein KIF17 to transport vesicles containing N-methyl-D-aspartate (NMDA receptor subunit NR2B along microtubules (By similarity. This complex may have the potential to couple synaptic vesicle exocytosis to cell adhesion in brain. Ensures the proper localization of GRIN2B (subunit 2B of the NMDA receptor to neuronal postsynaptic density and may function in localizing synaptic vesicles at synapses where it is recruited by beta-catenin and cadherin. Required to localize Kir2 channels, GABA transporter (SLC6A12 and EGFR/ERBB1, ERBB2, ERBB3 and ERBB4 to the basolateral membrane of epithelial cells.,LIN7C,LIN-7-C,LIN-7C,MALS-3,MALS3,VELI3,Signal Transduction,Cell Biology & Developmental Biology,Cell Adhesion,Tight Junctions,Cytoskeleton,Neuroscience,LIN7C
Molecular Weight:	21kDa
Gene ID:	55327
UniProt:	Q9NUP9
Pathways:	Synaptic Membrane

Application Details

Application Notes:	WB,1:500 - 1:2000
Restrictions:	For Research Use only

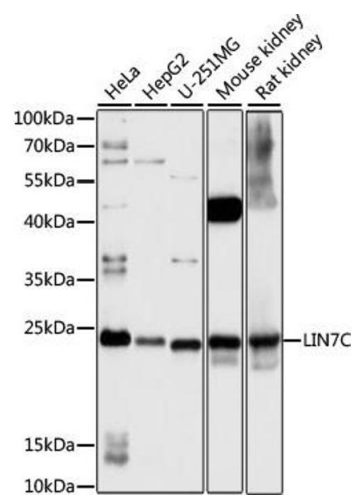
Handling

Format:	Liquid
Buffer:	PBS with 0.02 % sodium azide,50 % glycerol, pH 7.3.
Preservative:	Sodium azide
Precaution of Use:	This product contains Sodium azide: a POISONOUS AND HAZARDOUS SUBSTANCE which should be handled by trained staff only.
Storage:	-20 °C

Handling

Storage Comment: Store at -20°C. Avoid freeze / thaw cycles.

Images



Western Blotting

Image 1. Western blot analysis of extracts of various cell lines, using LIN7C antibody (ABIN7268269) at 1:1000 dilution. Secondary antibody: HRP Goat Anti-Rabbit IgG (H+L) (ABIN1684268 and ABIN3020597) at 1:10000 dilution. Lysates/proteins: 25 µg per lane. Blocking buffer: 3 % nonfat dry milk in TBST. Detection: ECL Basic Kit (RM00020). Exposure time: 3s.