



[Go to Product page](#)

Datasheet for ABIN7268286

anti-Lipoprotein Lipase antibody (AA 124-475)

1 Image

Overview

Quantity:	100 µL
Target:	Lipoprotein Lipase (LPL)
Binding Specificity:	AA 124-475
Reactivity:	Human
Host:	Rabbit
Clonality:	Polyclonal
Conjugate:	This Lipoprotein Lipase antibody is un-conjugated
Application:	Western Blotting (WB)

Product Details

Purpose:	Lipoprotein lipase (LPL) Rabbit pAb
Immunogen:	Recombinant fusion protein containing a sequence corresponding to amino acids 124-475 of human Lipoprotein lipase (Lipoprotein lipase (LPL)) (NP_000228.1).
Sequence:	SAGYTKLVGQ DVARFINWME EEFNYPLDNV HLLGYSLGAH AAGIAGSLTN KKVNRITGLD PAGPNFEYAE APSRLSPDDA DFVDVLHTFT RGSPGRSIGI QKPVGHVDIY PNGGTFQPGC NIGEAIRVIA ERGLGDVDQL VKCSHERSIH LFIDSLNNEE NPSKAYRCSS KEAFEKGLCL SCRKNRCNNL GYEINKVRAK RSSKMYLKTR SQMPYKVFHY QVKIHFSGTE SETHTNQAFE ISLYGTVAES ENIPFTLPEV STNKTYSFLLI YTEVDIGELL MLKWKWSDS YFSWSDWWSS PGFAIQKIRV KAGETQKKVI FCSREKVSHL QKGKAPAVFV KCHDKSLNKK SG
Isotype:	IgG
Cross-Reactivity:	Human, Mouse, Rat

Product Details

Characteristics: Polyclonal Antibodies

Purification: Affinity purification

Target Details

Target: Lipoprotein Lipase (LPL)

Alternative Name: LPL ([LPL Products](#))

Background: LPL encodes lipoprotein lipase, which is expressed in heart, muscle, and adipose tissue. LPL functions as a homodimer, and has the dual functions of triglyceride hydrolase and ligand/bridging factor for receptor-mediated lipoprotein uptake. Severe mutations that cause LPL deficiency result in type I hyperlipoproteinemia, while less extreme mutations in LPL are linked to many disorders of lipoprotein metabolism.,LPL,HDLCQ11,LIPD,Cancer,Signal Transduction,Endocrine & Metabolism,Lipid Metabolism,Lipases,Endocrine and metabolic diseases,Obesity,Neuroscience,Neurodegenerative Diseases,Stem Cells,Mesenchymal Stem Cells,Cardiovascular,Lipids,LPL

Molecular Weight: 53kDa

Gene ID: 4023

UniProt: [P06858](#)

Pathways: [Lipid Metabolism](#)

Application Details

Application Notes: WB,1:500 - 1:2000

Restrictions: For Research Use only

Handling

Format: Liquid

Buffer: PBS with 0.02 % sodium azide,50 % glycerol, pH 7.3.

Preservative: Sodium azide

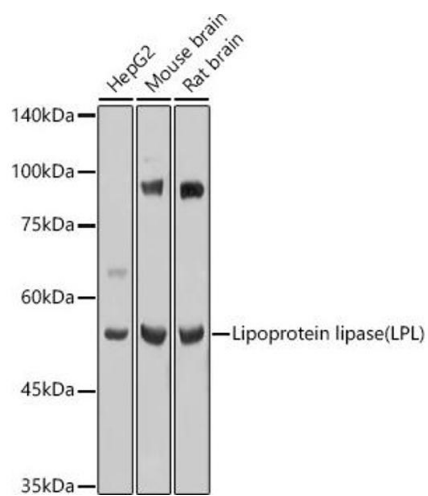
Precaution of Use: This product contains Sodium azide: a POISONOUS AND HAZARDOUS SUBSTANCE which should be handled by trained staff only.

Storage: -20 °C

Handling

Storage Comment: Store at -20°C. Avoid freeze / thaw cycles.

Images



Western Blotting

Image 1. Western blot analysis of extracts of various cell lines, using Lipoprotein lipase (LPL) antibody (ABIN7268286) at 1:1000 dilution. Secondary antibody: HRP Goat Anti-Rabbit IgG (H+L) (ABIN1684268 and ABIN3020597) at 1:10000 dilution. Lysates/proteins: 25 µg per lane. Blocking buffer: 3% nonfat dry milk in TBST. Detection: ECL Basic Kit (RM00020). Exposure time: 1s.