



[Go to Product page](#)

Datasheet for ABIN7268297

anti-LDLR antibody

4 Images

Overview

Quantity:	100 µL
Target:	LDLR
Reactivity:	Human
Host:	Rabbit
Clonality:	Monoclonal
Conjugate:	This LDLR antibody is un-conjugated
Application:	Western Blotting (WB)

Product Details

Purpose:	LDL Receptor (LDLR) Rabbit mAb
Immunogen:	Recombinant protein of human LDL Receptor (LDLR).
Isotype:	IgG
Cross-Reactivity:	Human, Mouse, Rat
Characteristics:	Monoclonal Antibodies
Purification:	Affinity purification

Target Details

Target:	LDLR
Alternative Name:	LDLR (LDLR Products)
Background:	The low density lipoprotein receptor (LDLR) gene family consists of cell surface proteins

Target Details

involved in receptor-mediated endocytosis of specific ligands. Low density lipoprotein (LDL) is normally bound at the cell membrane and taken into the cell ending up in lysosomes where the protein is degraded and the cholesterol is made available for repression of microsomal enzyme 3-hydroxy-3-methylglutaryl coenzyme A (HMG CoA) reductase, the rate-limiting step in cholesterol synthesis. At the same time, a reciprocal stimulation of cholesterol ester synthesis takes place. Mutations in this gene cause the autosomal dominant disorder, familial hypercholesterolemia. Alternate splicing results in multiple transcript variants.,LDLR,FH,FHC,LDLCQ2,Cancer,Signal Transduction,Endocrine & Metabolism,Lipid Metabolism,Cholesterol Metabolism,Cardiovascular,Heart,Lipids,Cardiovascular diseases,Heart disease,LDLR

Molecular Weight: 75kDa/76kDa/82kDa/90kDa/95kDa

Gene ID: 3949

UniProt: [P01130](#)

Pathways: [Hepatitis C](#), [Lipid Metabolism](#)

Application Details

Application Notes: WB,1:500 - 1:2000

Restrictions: For Research Use only

Handling

Format: Liquid

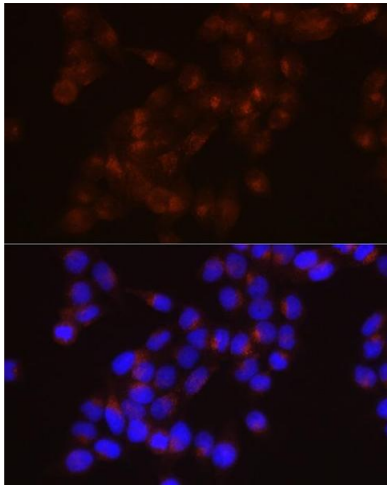
Buffer: PBS with 0.02 % sodium azide,50 % glycerol, pH 7.3.

Preservative: Sodium azide

Precaution of Use: This product contains Sodium azide: a POISONOUS AND HAZARDOUS SUBSTANCE which should be handled by trained staff only.

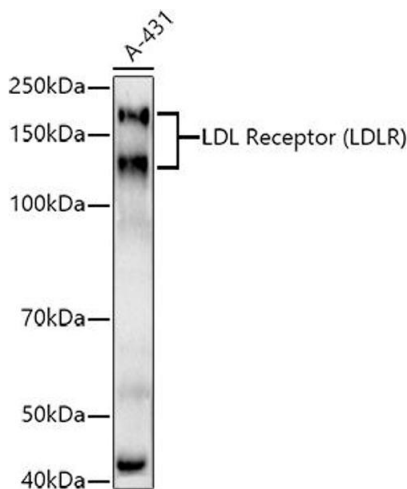
Storage: -20 °C

Storage Comment: Store at -20°C. Avoid freeze / thaw cycles.



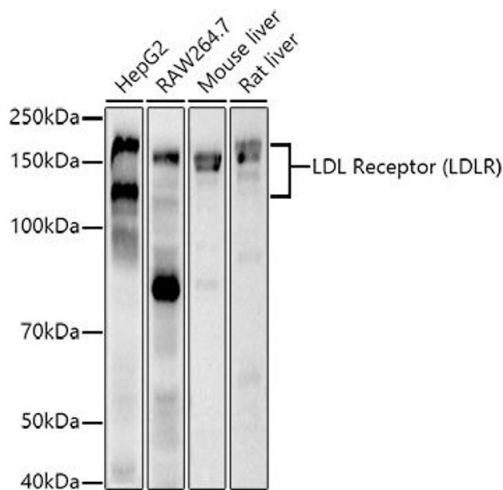
Immunofluorescence

Image 1. Immunofluorescence analysis of HeLa cells using LDL Receptor (LDLR) Rabbit mAb at dilution of 1:150 (40x lens). Blue: DAPI for nuclear staining.



Western Blotting

Image 2. Western blot analysis of extracts of A-431 cells, using LDL Receptor (LDLR) antibody at 1:1000 dilution. Secondary antibody: HRP Goat Anti-Rabbit IgG (H+L) (ABIN1684268 and ABIN3020597) at 1:10000 dilution. Lysates/proteins: 25 µg per lane. Blocking buffer: 3 % nonfat dry milk in TBST. Detection: ECL Basic Kit (RM00020). Exposure time: 180s.



Western Blotting

Image 3. Western blot analysis of extracts of various cell lines, using LDL Receptor (LDLR) antibody at 1:1000 dilution. Secondary antibody: HRP Goat Anti-Rabbit IgG (H+L) (ABIN1684268 and ABIN3020597) at 1:10000 dilution. Lysates/proteins: 25 µg per lane. Blocking buffer: 3 % nonfat dry milk in TBST. Detection: ECL Basic Kit (RM00020). Exposure time: 30s.

Please check the [product details page](#) for more images. Overall 4 images are available for ABIN7268297.