



[Go to Product page](#)

Datasheet for ABIN7268305  
**anti-LSM10 antibody (AA 1-123)**

1 Image

Overview

Quantity:	100 µL
Target:	LSM10
Binding Specificity:	AA 1-123
Reactivity:	Human
Host:	Rabbit
Clonality:	Polyclonal
Conjugate:	This LSM10 antibody is un-conjugated
Application:	Western Blotting (WB)

Product Details

Purpose:	LSM10 Rabbit pAb
Immunogen:	Recombinant fusion protein containing a sequence corresponding to amino acids 1-123 of human LSM10 (NP_116270.1).
Sequence:	MAVSHSVKER TISENSLIIL LQGLQGRVTT VDLRDESVAH GRIDNVDAFM NIRLAKVTTYT DRWGHQVKLD DLFVTGRNVR YVHIPDDVNI TSTIEQLQI IHRVRNFGGK GQGRWEFPPK NCK
Isotype:	IgG
Cross-Reactivity:	Rat
Characteristics:	Polyclonal Antibodies
Purification:	Affinity purification

## Target Details

---

Target:	LSM10
Alternative Name:	LSM10 ( <a href="#">LSM10 Products</a> )
Background:	Appears to function in the U7 snRNP complex that is involved in histone 3'-end processing. Increases U7 snRNA levels but not histone 3'-end pre-mRNA processing activity, when overexpressed. Required for cell cycle progression from G1 to S phases. Binds specifically to U7 snRNA. Binds to the downstream cleavage product (DCP of histone pre-mRNA in a U7 snRNP dependent manner.,LSM10,MST074,MSTP074,Epigenetics & Nuclear Signaling,LSM10
Molecular Weight:	14kDa
Gene ID:	84967
UniProt:	<a href="#">Q969L4</a>

## Application Details

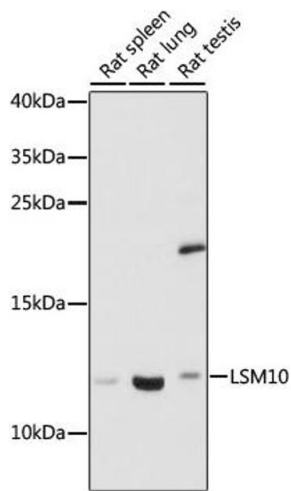
---

Application Notes:	WB,1:500 - 1:2000
Restrictions:	For Research Use only

## Handling

---

Format:	Liquid
Buffer:	PBS with 0.02 % sodium azide,50 % glycerol, pH 7.3.
Preservative:	Sodium azide
Precaution of Use:	This product contains Sodium azide: a POISONOUS AND HAZARDOUS SUBSTANCE which should be handled by trained staff only.
Storage:	-20 °C
Storage Comment:	Store at -20°C. Avoid freeze / thaw cycles.



### Western Blotting

**Image 1.** Western blot analysis of extracts of various cell lines, using LSM10 antibody (ABIN7268305) at 1:1000 dilution. Secondary antibody: HRP Goat Anti-Rabbit IgG (H+L) (ABIN1684268 and ABIN3020597) at 1:10000 dilution. Lysates/proteins: 25 µg per lane. Blocking buffer: 3 % nonfat dry milk in TBST. Detection: ECL Basic Kit (RM00020). Exposure time: 30s.