



[Go to Product page](#)

Datasheet for ABIN7268307  
**anti-LSM12B antibody (AA 1-195)**

1 Image

Overview

Quantity:	100 µL
Target:	LSM12B
Binding Specificity:	AA 1-195
Reactivity:	Human
Host:	Rabbit
Clonality:	Polyclonal
Conjugate:	This LSM12B antibody is un-conjugated
Application:	Western Blotting (WB)

Product Details

Purpose:	LSM12 Rabbit pAb
Immunogen:	Recombinant fusion protein containing a sequence corresponding to amino acids 1-195 of human LSM12 (NP_689557.1).
Sequence:	MAAPPGEYFS VGSQVSCRTC QEQLRQGEVV AFDYQSKMLA LKCPSSSGKP NHADILLINL QYVSEVEIIN DRTETPPPLA SLNVSKLASK ARTEKEEKLS QAYAISAGVS LEGQQLFQTI HKTIKDCKWQ EKNIVVMEEV VITPPYQVEN CKGKEGSALS HVRKIVEKHF RDVESQKILQ RSQAQQPQKE AALSS
Isotype:	IgG
Cross-Reactivity:	Human, Mouse
Characteristics:	Polyclonal Antibodies

## Product Details

---

Purification: Affinity purification

## Target Details

---

Target: LSM12B

Alternative Name: LSM12 ([LSM12B Products](#))

Background: LSM12,PNAS-135,Cell Biology & Developmental Biology,LSM12

Molecular Weight: 21kDa

Gene ID: 124801

UniProt: [Q3MHD2](#)

## Application Details

---

Application Notes: WB,1:500 - 1:2000

Restrictions: For Research Use only

## Handling

---

Format: Liquid

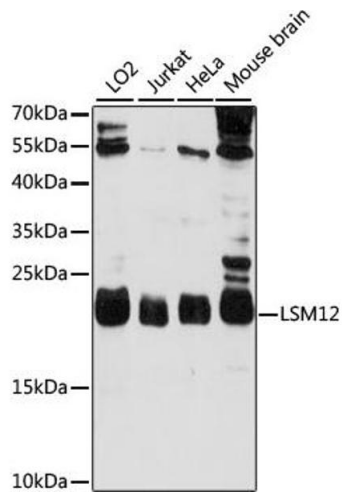
Buffer: PBS with 0.02 % sodium azide,50 % glycerol, pH 7.3.

Preservative: Sodium azide

Precaution of Use: This product contains Sodium azide: a POISONOUS AND HAZARDOUS SUBSTANCE which should be handled by trained staff only.

Storage: -20 °C

Storage Comment: Store at -20°C. Avoid freeze / thaw cycles.



### Western Blotting

**Image 1.** Western blot analysis of extracts of various cell lines, using LSM12 antibody (ABIN7268307) at 1000 dilution. Secondary antibody: HRP Goat Anti-Rabbit IgG (H+L) (ABIN1684268 and ABIN3020597) at 1:10000 dilution. Lysates/proteins: 25 µg per lane. Blocking buffer: 3 % nonfat dry milk in TBST. Detection: ECL Basic Kit (RM00020). Exposure time: 60s.