

Datasheet for ABIN7268318  
**anti-LCP2 antibody (pTyr145)**[Go to Product page](#)

## 1 Image

## Overview

Quantity:	100 µL
Target:	LCP2
Binding Specificity:	pTyr145
Reactivity:	Human
Host:	Rabbit
Clonality:	Polyclonal
Conjugate:	This LCP2 antibody is un-conjugated
Application:	Western Blotting (WB)

## Product Details

Purpose:	Phospho-LCP2-Y145 Rabbit pAb
Immunogen:	A synthetic phosphorylated peptide around Y145 of human LCP2 (NP_005556.1).
Sequence:	ADYEP
Isotype:	IgG
Cross-Reactivity:	Human, Mouse
Characteristics:	Phosphorylated Antibodies
Purification:	Affinity purification

## Target Details

Target:	LCP2
---------	------

## Target Details

Alternative Name:	LCP2 ( <a href="#">LCP2 Products</a> )
Background:	SLP-76 was originally identified as a substrate of the ZAP-70 protein tyrosine kinase following T cell receptor (TCR) ligation in the leukemic T cell line Jurkat. The SLP-76 locus has been localized to human chromosome 5q33 and the gene structure has been partially characterized in mice. The human and murine cDNAs both encode 533 amino acid proteins that are 72 % identical and comprised of three modular domains. The NH2-terminus contains an acidic region that includes a PEST domain and several tyrosine residues which are phosphorylated following TCR ligation. SLP-76 also contains a central proline-rich domain and a COOH-terminal SH2 domain. A number of additional proteins have been identified that associate with SLP-76 both constitutively and inducibly following receptor ligation, supporting the notion that SLP-76 functions as an adaptor or scaffold protein. Studies using SLP-76 deficient T cell lines or mice have provided strong evidence that SLP-76 plays a positive role in promoting T cell development and activation as well as mast cell and platelet function.,LCP2,SLP-76,SLP76,Signal Transduction,Immunology & Inflammation,T Cell Receptor Signaling Pathway,Protein phosphorylation,LCP2
Molecular Weight:	60kDa
Gene ID:	3937
UniProt:	<a href="#">Q13094</a>
Pathways:	<a href="#">TCR Signaling</a> , <a href="#">Fc-epsilon Receptor Signaling Pathway</a>

## Application Details

Application Notes:	WB,1:500 - 1:2000
Restrictions:	For Research Use only

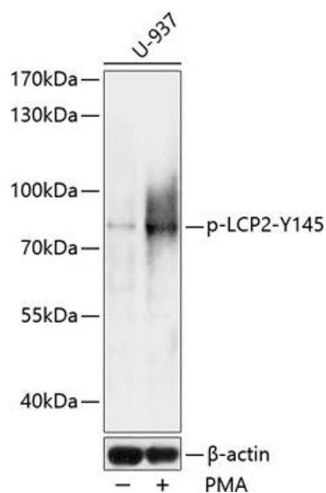
## Handling

Format:	Liquid
Buffer:	PBS with 0.02 % sodium azide,50 % glycerol, pH 7.3.
Preservative:	Sodium azide
Precaution of Use:	This product contains Sodium azide: a POISONOUS AND HAZARDOUS SUBSTANCE which should be handled by trained staff only.
Storage:	-20 °C

## Handling

Storage Comment: Store at -20°C. Avoid freeze / thaw cycles.

## Images



### Western Blotting

**Image 1.** Western blot analysis of extracts of U937 cells, using Phospho-LCP2-Y145 antibody (ABIN7268318) at 1:1000 dilution. U-937 cells were treated by PMA/TPA (200nM) for 30 minutes. Secondary antibody: HRP Goat Anti-Rabbit IgG (H+L) (ABIN1684268 and ABIN3020597) at 1:10000 dilution. Lysates/proteins: 25 µg per lane. Blocking buffer: 3 % BSA. Detection: ECL Basic Kit (RM00020). Exposure time: 10s.