



[Go to Product page](#)

Datasheet for ABIN7268322
anti-LYRM1 antibody (AA 1-122)

1 Image

Overview

Quantity:	100 µL
Target:	LYRM1
Binding Specificity:	AA 1-122
Reactivity:	Human
Host:	Rabbit
Clonality:	Polyclonal
Conjugate:	This LYRM1 antibody is un-conjugated
Application:	Western Blotting (WB)

Product Details

Purpose:	LYRM1 Rabbit pAb
Immunogen:	Recombinant fusion protein containing a sequence corresponding to amino acids 1-122 of human LYRM1 (NP_065157.1).
Sequence:	MTTATRQEV L GLYRSIFRLA RKWQATSGQM EDTIKEKQYI LNEARTLFRK NKNLTDLDL I KQCIDECTAR IEIGLHYKIP YPRPIHLPPM GLTPLRGRGL RSQEKLRLKLS KPVYLRSHDE VS
Isotype:	IgG
Cross-Reactivity:	Mouse
Characteristics:	Polyclonal Antibodies
Purification:	Affinity purification

Target Details

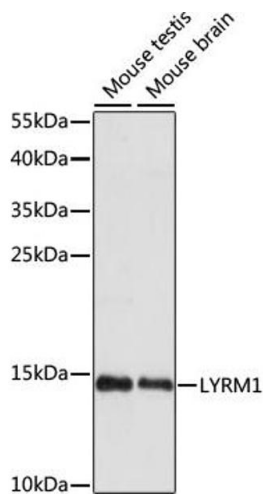
Target:	LYRM1
Alternative Name:	LYRM1 (LYRM1 Products)
Background:	The protein encoded by this gene belongs to the mitochondrial leucine/tyrosine/arginine motif family of proteins. Proteins of this family are short polypeptides that contain a leucine/tyrosine/arginine motif near the N-terminus. This gene is widely expressed with high levels in omental adipose tissue of obese individuals. In adipose tissue, the protein is localized to the nucleus where it promotes preadipocyte proliferation and lowers the rate of apoptosis to regulate adipose tissue homeostasis. Overexpression of this gene in adipocytes causes abnormal mitochondrial morphology and mitochondrial dysfunction. Alternative splicing results in multiple transcript variants.,LYRM1,A211C6.1,LYRM1
Molecular Weight:	14kDa
Gene ID:	57149
UniProt:	O43325

Application Details

Application Notes:	WB,1:200 - 1:2000
Restrictions:	For Research Use only

Handling

Format:	Liquid
Buffer:	PBS with 0.02 % sodium azide,50 % glycerol, pH 7.3.
Preservative:	Sodium azide
Precaution of Use:	This product contains Sodium azide: a POISONOUS AND HAZARDOUS SUBSTANCE which should be handled by trained staff only.
Storage:	-20 °C
Storage Comment:	Store at -20°C. Avoid freeze / thaw cycles.



Western Blotting

Image 1. Western blot analysis of extracts of various cell lines, using LYRM1 antibody (ABIN7268322) at 1:1000 dilution. Secondary antibody: HRP Goat Anti-Rabbit IgG (H+L) (ABIN1684268 and ABIN3020597) at 1:10000 dilution. Lysates/proteins: 25 µg per lane. Blocking buffer: 3 % nonfat dry milk in TBST. Detection: ECL Basic Kit (RM00020). Exposure time: 90s.