

Datasheet for ABIN7268324

**anti-LSD1 antibody****2** Images[Go to Product page](#)

## Overview

Quantity:	100 µL
Target:	LSD1 (KDM1A)
Reactivity:	Human
Host:	Rabbit
Clonality:	Monoclonal
Conjugate:	This LSD1 antibody is un-conjugated
Application:	Western Blotting (WB), Immunohistochemistry (IHC)

## Product Details

Purpose:	KDM1 / LSD1 Rabbit mAb
Immunogen:	A synthesized peptide derived from human KDM1 / LSD1
Isotype:	IgG
Cross-Reactivity:	Human
Characteristics:	Monoclonal Antibodies
Purification:	Affinity purification

## Target Details

Target:	LSD1 (KDM1A)
Alternative Name:	KDM1A ( <a href="#">KDM1A Products</a> )
Background:	This gene encodes a nuclear protein containing a SWIRM domain, a FAD-binding motif, and an

## Target Details

---

amine oxidase domain. This protein is a component of several histone deacetylase complexes, though it silences genes by functioning as a histone demethylase. Alternative splicing results in multiple transcript variants. [provided by RefSeq, Apr 2009],AOF2, BHC110, CPRF, KDM1, LSD1,Epigenetic writers and erasers of core Histones,Epigenetic writers and erasers of core Histones\_Demethylation,Epigenetics & Nuclear Signaling,Transcription Factors,KDM1A

Molecular Weight: 110kDa

Gene ID: 23028

UniProt: [O60341](#)

Pathways: [Regulation of Hormone Metabolic Process](#), [Regulation of Hormone Biosynthetic Process](#), [Negative Regulation of intrinsic apoptotic Signaling](#), [Warburg Effect](#)

## Application Details

---

Application Notes: WB,1:500 - 1:2000,IHC,1:50 - 1:200

Restrictions: For Research Use only

## Handling

---

Format: Liquid

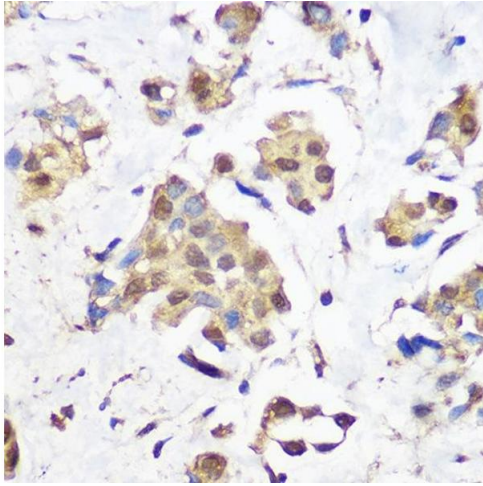
Buffer: PBS with 0.02 % sodium azide,0.05 % BSA,50 % glycerol, pH 7.3.

Preservative: Sodium azide

Precaution of Use: This product contains Sodium azide: a POISONOUS AND HAZARDOUS SUBSTANCE which should be handled by trained staff only.

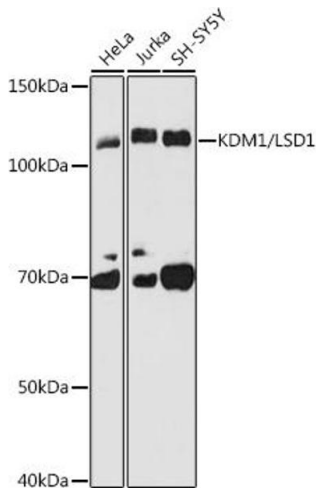
Storage: -20 °C

Storage Comment: Store at -20°C. Avoid freeze / thaw cycles.



### Immunohistochemistry

**Image 1.** Immunohistochemistry of paraffin-embedded human breast cancer using KDM1 / LSD1 Rabbit mAb (ABIN7268324) at dilution of 1:100 (40x lens). Perform microwave antigen retrieval with 10 mM Tris/EDTA buffer pH 9.0 before commencing with IHC staining protocol.



### Western Blotting

**Image 2.** Western blot analysis of extracts of various cell lines, using KDM1 / LSD1 antibody (ABIN7268324) at 1:1000 dilution. Secondary antibody: HRP Goat Anti-Rabbit IgG (H+L) (ABIN1684268 and ABIN3020597) at 1:10000 dilution. Lysates/proteins: 25 µg per lane. Blocking buffer: 3 % nonfat dry milk in TBST. Detection: ECL Basic Kit (RM00020). Exposure time: 180s.