



[Go to Product page](#)

Datasheet for ABIN7268325
anti-KDM1B antibody

1 Image

Overview

Quantity:	100 µL
Target:	KDM1B
Reactivity:	Human
Host:	Rabbit
Clonality:	Monoclonal
Conjugate:	This KDM1B antibody is un-conjugated
Application:	Western Blotting (WB)

Product Details

Purpose:	LSD2/KDM1B/AOF1 Rabbit mAb
Immunogen:	A synthesized peptide derived from human LSD2/KDM1B/AOF1
Isotype:	IgG
Cross-Reactivity:	Human, Mouse, Rat
Characteristics:	Monoclonal Antibodies
Purification:	Affinity purification

Target Details

Target:	KDM1B
Alternative Name:	KDM1B (KDM1B Products)
Background:	Flavin-dependent histone demethylases, such as KDM1B, regulate histone lysine methylation,

Target Details

an epigenetic mark that regulates gene expression and chromatin function (Karytinis et al., 2009 [PubMed 19407342]).[supplied by OMIM, Oct 2009],AOF1, C6orf193, LSD2, bA204B7.3, dJ298J15.2,Epigenetics & Nuclear Signaling,KDM1B

Molecular Weight: 92kDa

Gene ID: 221656

UniProt: [Q8NB78](#)

Pathways: [Warburg Effect](#)

Application Details

Application Notes: WB,1:500 - 1:2000

Restrictions: For Research Use only

Handling

Format: Liquid

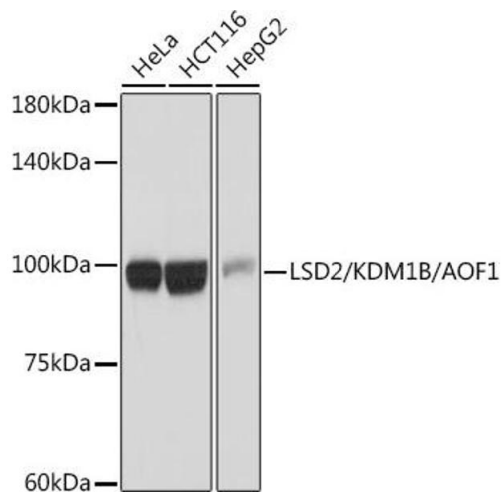
Buffer: PBS with 0.02 % sodium azide,0.05 % BSA,50 % glycerol, pH 7.3.

Preservative: Sodium azide

Precaution of Use: This product contains Sodium azide: a POISONOUS AND HAZARDOUS SUBSTANCE which should be handled by trained staff only.

Storage: -20 °C

Storage Comment: Store at -20°C. Avoid freeze / thaw cycles.



Western Blotting

Image 1. Western blot analysis of extracts of various cell lines, using LSD2/ antibody (ABIN7268325) at 1:1000 dilution. Secondary antibody: HRP Goat Anti-Rabbit IgG (H+L) (ABIN1684268 and ABIN3020597) at 1:10000 dilution. Lysates/proteins: 25 µg per lane. Blocking buffer: 3 % nonfat dry milk in TBST. Detection: ECL Basic Kit (RM00020). Exposure time: 10s.