

Datasheet for ABIN7268326

anti-KDM2A antibody[Go to Product page](#)**1** Image

Overview

Quantity:	100 µL
Target:	KDM2A
Reactivity:	Human
Host:	Rabbit
Clonality:	Polyclonal
Conjugate:	This KDM2A antibody is un-conjugated
Application:	Western Blotting (WB)

Product Details

Purpose:	KDM2A Rabbit pAb
Immunogen:	Recombinant protein of human KDM2A.
Isotype:	IgG
Cross-Reactivity:	Human, Mouse
Characteristics:	Polyclonal Antibodies
Purification:	Affinity purification

Target Details

Target:	KDM2A
Alternative Name:	KDM2A (KDM2A Products)
Background:	This gene encodes a member of the F-box protein family which is characterized by an

Target Details

approximately 40 amino acid motif, the F-box. The F-box proteins constitute one of the four subunits of ubiquitin protein ligase complex called SCFs (SKP1-cullin-F-box), which function in phosphorylation-dependent ubiquitination. The F-box proteins are divided into 3 classes: Fbws containing WD-40 domains, Fbls containing leucine-rich repeats, and Fbxs containing either different protein-protein interaction modules or no recognizable motifs. The protein encoded by this gene belongs to the Fbls class and, in addition to an F-box, contains at least six highly degenerated leucine-rich repeats. This family member plays a role in epigenetic silencing. It nucleates at CpG islands and specifically demethylates both mono- and di-methylated lysine-36 of histone H3. Alternative splicing results in multiple transcript variants.,KDM2A, CXXC8, FBL11, FBL7, FBXL11, JHDM1A, LILINA, lysine demethylase 2A,Epigenetic writers and erasers of core Histones,Epigenetic writers and erasers of core Histones_Demethylation,Epigenetics & Nuclear Signaling,KDM2A

Molecular Weight:	69kDa/81kDa/89kDa/96kDa/132kDa
-------------------	--------------------------------

Gene ID:	22992
----------	-------

UniProt:	Q9Y2K7
----------	------------------------

Pathways:	Warburg Effect
-----------	--------------------------------

Application Details

Application Notes:	WB,1:500 - 1:2000
--------------------	-------------------

Restrictions:	For Research Use only
---------------	-----------------------

Handling

Format:	Liquid
---------	--------

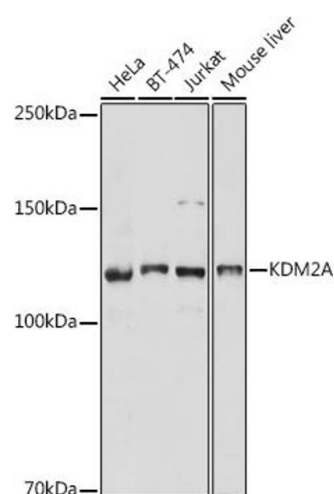
Buffer:	PBS with 0.02 % sodium azide,50 % glycerol, pH 7.3.
---------	---

Preservative:	Sodium azide
---------------	--------------

Precaution of Use:	This product contains Sodium azide: a POISONOUS AND HAZARDOUS SUBSTANCE which should be handled by trained staff only.
--------------------	--

Storage:	-20 °C
----------	--------

Storage Comment:	Store at -20°C. Avoid freeze / thaw cycles.
------------------	---



Western Blotting

Image 1. Western blot analysis of extracts of various cell lines, using KDM2A antibody (ABIN7268326) at 1:1000 dilution. Secondary antibody: HRP Goat Anti-Rabbit IgG (H+L) (ABIN1684268 and ABIN3020597) at 1:10000 dilution. Lysates/proteins: 25 µg per lane. Blocking buffer: 3 % nonfat dry milk in TBST. Detection: ECL Basic Kit (RM00020). Exposure time: 3s.