



[Go to Product page](#)

Datasheet for ABIN7268327  
**anti-KDM2B antibody (AA 600-700)**

1 Image

Overview

|                      |                                      |
|----------------------|--------------------------------------|
| Quantity:            | 100 µL                               |
| Target:              | KDM2B                                |
| Binding Specificity: | AA 600-700                           |
| Reactivity:          | Human                                |
| Host:                | Rabbit                               |
| Clonality:           | Polyclonal                           |
| Conjugate:           | This KDM2B antibody is un-conjugated |
| Application:         | Western Blotting (WB)                |

Product Details

|                   |   |
|-------------------|---|
| Purpose:          | KDM2B Rabbit pAb  |
| Immunogen:        | A synthetic peptide corresponding to a sequence within amino acids 600-700 of human KDM2B (XP_011537177.1).         |
| Sequence:         | SGCSWIAVSA LCSSSCPLLR TLDVQWVEGL KDAQMRDLLS PPTDNRPGQM DNRSKLRNIV<br>ELRLAGLDIT DASLRLIIRH MPLLSKHLHLS YCNHVTDQSI N |
| Isotype:          | IgG   |
| Cross-Reactivity: | Human   |
| Characteristics:  | Polyclonal Antibodies   |
| Purification:     | Affinity purification   |

## Target Details

---

|                   |   |
|-------------------|---|
| Target:           | KDM2B   |
| Alternative Name: | KDM2B ( <a href="#">KDM2B Products</a> )  |
| Background:       | <p>This gene encodes a member of the F-box protein family which is characterized by an approximately 40 amino acid motif, the F-box. The F-box proteins constitute one of the four subunits of ubiquitin protein ligase complex called SCFs (SKP1-cullin-F-box), which function in phosphorylation-dependent ubiquitination. The F-box proteins are divided into 3 classes: Fbws containing WD-40 domains, Fbls containing leucine-rich repeats, and Fbxs containing either different protein-protein interaction modules or no recognizable motifs. The protein encoded by this gene belongs to the Fbls class. Multiple alternatively spliced transcript variants have been found for this gene, but the full-length nature of some variants has not been determined.,KDM2B,CXXC2,FBXL10,Fbl10,JHDM1B,PCCX2,Epigenetics &amp; Nuclear Signaling,Chromatin Modifying Enzymes,Demethylation,KDM2B</p> |
| Molecular Weight: | 63kDa/144kDa/149kDa/151kDa/152kDa   |
| Gene ID:          | 84678   |
| UniProt:          | <a href="#">Q8NHM5</a>  |
| Pathways:         | <a href="#">Tube Formation</a> , <a href="#">Warburg Effect</a>   |

## Application Details

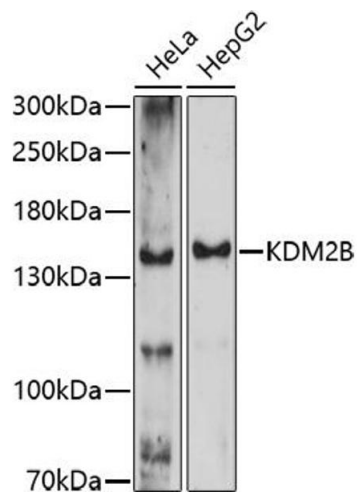
---

|                    |                       |
|--------------------|-----------------------|
| Application Notes: | WB,1:500 - 1:2000     |
| Restrictions:      | For Research Use only |

## Handling

---

|                    |  |
|--------------------|--|
| Format:            | Liquid   |
| Buffer:            | PBS with 0.02 % sodium azide,50 % glycerol, pH 7.3.  |
| Preservative:      | Sodium azide   |
| Precaution of Use: | This product contains Sodium azide: a POISONOUS AND HAZARDOUS SUBSTANCE which should be handled by trained staff only. |
| Storage:           | -20 °C   |
| Storage Comment:   | Store at -20°C. Avoid freeze / thaw cycles.  |



### Western Blotting

**Image 1.** Western blot analysis of extracts of various cell lines, using KDM2B antibody (ABIN7268327) at 1:1000 dilution. Secondary antibody: HRP Goat Anti-Rabbit IgG (H+L) (ABIN1684268 and ABIN3020597) at 1:10000 dilution. Lysates/proteins: 25 µg per lane. Blocking buffer: 3 % nonfat dry milk in TBST. Detection: ECL Enhanced Kit (RM00021). Exposure time: 90s.