



Datasheet for ABIN7268329  
**anti-KDM4B antibody**



[Go to Product page](#)

4 Images

Overview

Quantity:	100 µL
Target:	KDM4B
Reactivity:	Human
Host:	Rabbit
Clonality:	Monoclonal
Conjugate:	This KDM4B antibody is un-conjugated
Application:	Western Blotting (WB), Immunofluorescence (IF), Immunoprecipitation (IP)

Product Details

Purpose:	KDM4B/JMJD2B Rabbit mAb
Immunogen:	A synthesized peptide derived from human KDM4B/JMJD2B
Isotype:	IgG
Cross-Reactivity:	Human, Mouse, Rat
Characteristics:	Monoclonal Antibodies
Purification:	Affinity purification

Target Details

Target:	KDM4B
Alternative Name:	KDM4B ( <a href="#">KDM4B Products</a> )
Background:	Histone demethylase that specifically demethylates 'Lys-9' of histone H3, thereby playing a role

## Target Details

---

in histone code. Does not demethylate histone H3 'Lys-4', H3 'Lys-27', H3 'Lys-36' nor H4 'Lys-20'. Only able to demethylate trimethylated H3 'Lys-9', with a weaker activity than KDM4A, KDM4C and KDM4D. Demethylation of Lys residue generates formaldehyde and succinate.,JMJD2B, TDRD14B,Cell Biology & Developmental Biology,Cell Cycle,DNA Damage & Repair,Epigenetic writers and erasers of core Histones,Epigenetic writers and erasers of core Histones\_Demethylation,Epigenetics & Nuclear Signaling,Immunology & Inflammation,Kinase,Kinase\_Serine/threonine kinases,Nuclear Receptor Signaling,Signal Transduction,KDM4B

---

Molecular Weight: 150kDa

---

Gene ID: 23030

---

UniProt: [O94953](#)

---

Pathways: [Warburg Effect](#)

## Application Details

---

---

Application Notes: WB,1:500 - 1:2000,IF,1:50 - 1:200,IP,1:50 - 1:200

---

Restrictions: For Research Use only

## Handling

---

---

Format: Liquid

---

Buffer: PBS with 0.02 % sodium azide,0.05 % BSA,50 % glycerol, pH 7.3.

---

Preservative: Sodium azide

---

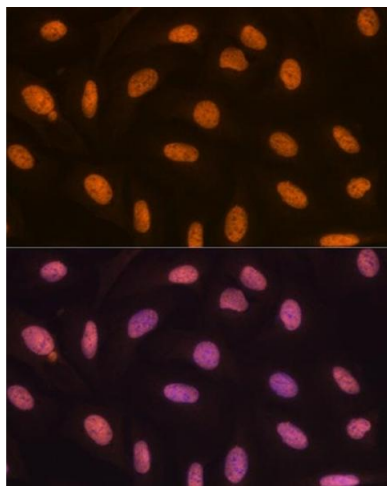
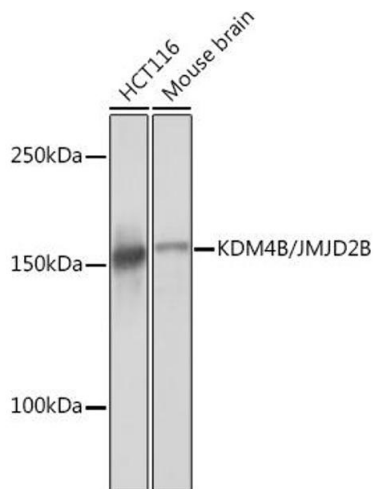
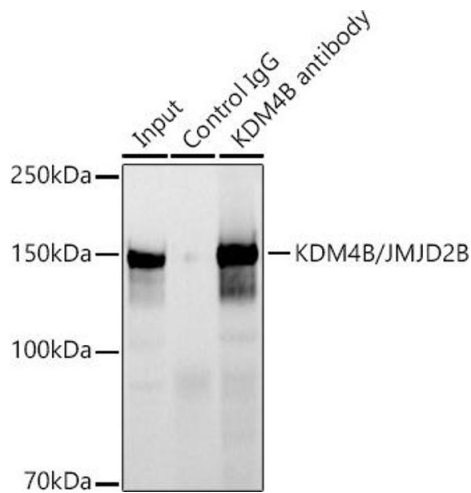
Precaution of Use: This product contains Sodium azide: a POISONOUS AND HAZARDOUS SUBSTANCE which should be handled by trained staff only.

---

Storage: -20 °C

---

Storage Comment: Store at -20°C. Avoid freeze / thaw cycles.



### Immunoprecipitation

**Image 1.** Immunoprecipitation analysis of 300 µg extracts of HCT116 cells using 3 µg KDM4B/JMJD2B antibody (ABIN7268329). Western blot was performed from the immunoprecipitate using KDM4B/JMJD2B antibody (ABIN7268329) at a dilution of 1:1000.

### Western Blotting

**Image 2.** Western blot analysis of extracts of various cell lines, using KDM4B/JMJD2B Rabbit mAb (ABIN7268329) at 1:1000 dilution. Secondary antibody: HRP Goat Anti-Rabbit IgG (H+L) (ABIN1684268 and ABIN3020597) at 1:10000 dilution. Lysates/proteins: 25 µg per lane. Blocking buffer: 3 % nonfat dry milk in TBST. Detection: ECL Basic Kit (RM00020). Exposure time: 1s.

### Immunofluorescence

**Image 3.** Immunofluorescence analysis of U-2 OS cells using KDM4B/JMJD2B Rabbit mAb (ABIN7268329) at dilution of 1:100 (40x lens). Blue: DAPI for nuclear staining.

Please check the [product details page](#) for more images. Overall 4 images are available for ABIN7268329.