

Datasheet for ABIN7268333
**anti-Lysine (K)-Specific Methyltransferase 2B (KMT2B)
antibody**



[Go to Product page](#)

1 Image

Overview

Quantity:	100 µL
Target:	Lysine (K)-Specific Methyltransferase 2B (KMT2B)
Reactivity:	Human
Host:	Rabbit
Clonality:	Polyclonal
Conjugate:	Un-conjugated
Application:	Western Blotting (WB)

Product Details

Purpose:	KMT2B Rabbit pAb
Immunogen:	Recombinant protein of human KMT2B.
Isotype:	IgG
Cross-Reactivity:	Human, Mouse, Rat
Characteristics:	Polyclonal Antibodies
Purification:	Affinity purification

Target Details

Target:	Lysine (K)-Specific Methyltransferase 2B (KMT2B)
Alternative Name:	KMT2B (KMT2B Products)
Background:	This gene encodes a protein which contains multiple domains including a CXXC zinc finger,

Target Details

three PHD zinc fingers, two FY-rich domains, and a SET (suppressor of variegation, enhancer of zeste, and trithorax) domain. The SET domain is a conserved C-terminal domain that characterizes proteins of the MLL (mixed-lineage leukemia) family. This gene is ubiquitously expressed in adult tissues. It is also amplified in solid tumor cell lines, and may be involved in human cancer. Two alternatively spliced transcript variants encoding distinct isoforms have been reported for this gene, however, the full length nature of the shorter transcript is not known. [provided by RefSeq, Jul 2008],CXXC10, DYT28, HRX2, MLL1B, MLL2, MLL4, TRX2, WBP-7, WBP7,KMT2B

Gene ID: 9757

UniProt: [Q9UMN6](#)

Pathways: [Warburg Effect](#)

Application Details

Application Notes: WB,1:500 - 1:2000

Restrictions: For Research Use only

Handling

Format: Liquid

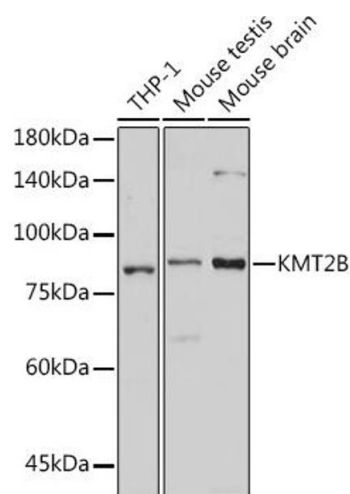
Buffer: PBS with 0.02 % sodium azide,50 % glycerol, pH 7.3.

Preservative: Sodium azide

Precaution of Use: This product contains Sodium azide: a POISONOUS AND HAZARDOUS SUBSTANCE which should be handled by trained staff only.

Storage: -20 °C

Storage Comment: Store at -20°C. Avoid freeze / thaw cycles.



Western Blotting

Image 1. Western blot analysis of extracts of various cell lines, using KMT2B antibody (ABIN7268333) at 1:1000 dilution. Secondary antibody: HRP Goat Anti-Rabbit IgG (H+L) (ABIN1684268 and ABIN3020597) at 1:10000 dilution. Lysates/proteins: 25 µg per lane. Blocking buffer: 3 % nonfat dry milk in TBST. Detection: ECL Basic Kit (RM00020). Exposure time: 30s.