

Datasheet for ABIN7268334

anti-LPAR1 antibody[Go to Product page](#)**1** Image

Overview

Quantity:	100 µL
Target:	LPAR1
Reactivity:	Human
Host:	Rabbit
Clonality:	Monoclonal
Conjugate:	This LPAR1 antibody is un-conjugated
Application:	Western Blotting (WB)

Product Details

Purpose:	EDG2/LPA-1 Rabbit mAb
Immunogen:	A synthesized peptide derived from human EDG2/LPA-1
Isotype:	IgG
Cross-Reactivity:	Human, Mouse, Rat
Characteristics:	Monoclonal Antibodies
Purification:	Affinity purification

Target Details

Target:	LPAR1
Alternative Name:	LPAR1 (LPAR1 Products)
Background:	The integral membrane protein encoded by this gene is a lysophosphatidic acid (LPA) receptor

Target Details

from a group known as EDG receptors. These receptors are members of the G protein-coupled receptor superfamily. Utilized by LPA for cell signaling, EDG receptors mediate diverse biologic functions, including proliferation, platelet aggregation, smooth muscle contraction, inhibition of neuroblastoma cell differentiation, chemotaxis, and tumor cell invasion. Two transcript variants encoding the same protein have been identified for this gene [provided by RefSeq, Jul 2008],EDG2, GPR26, Gpcr26, LPA1, Mrec1.3, VZG1, edg-2, rec.1.3, vzg-1,Cancer,Cardiovascular,Cardiovascular diseases,Cardiovascular diseases_Heart disease,Endocrine & Metabolism,G protein signaling,G protein signaling_G-Protein-Coupled Receptors(GPCR),Heart,Immunology & Inflammation,Signal Transduction,LPAR1

Molecular Weight: 39kDa

Gene ID: 1902

UniProt: [Q92633](#)

Pathways: [Myometrial Relaxation and Contraction](#), [Smooth Muscle Cell Migration](#)

Application Details

Application Notes: WB,1:500 - 1:2000

Restrictions: For Research Use only

Handling

Format: Liquid

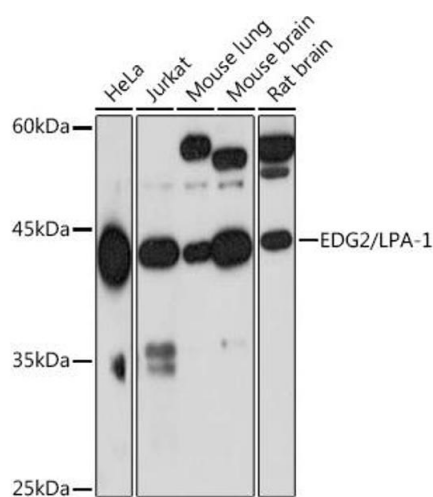
Buffer: PBS with 0.02 % sodium azide,0.05 % BSA,50 % glycerol, pH 7.3.

Preservative: Sodium azide

Precaution of Use: This product contains Sodium azide: a POISONOUS AND HAZARDOUS SUBSTANCE which should be handled by trained staff only.

Storage: -20 °C

Storage Comment: Store at -20°C. Avoid freeze / thaw cycles.



Western Blotting

Image 1. Western blot analysis of extracts of various cell lines, using EDG2/LPA-1 Rabbit mAb (ABIN7268334) at 1:1000 dilution. Secondary antibody: HRP Goat Anti-Rabbit IgG (H+L) (ABIN1684268 and ABIN3020597) at 1:10000 dilution. Lysates/proteins: 25 µg per lane. Blocking buffer: 3 % nonfat dry milk in TBST. Detection: ECL Basic Kit (RM00020). Exposure time: 90s.