

Datasheet for ABIN7268335  
**anti-EDG4 antibody (AA 250-350)**[Go to Product page](#)

## 1 Image

## Overview

Quantity:	100 µL
Target:	EDG4 (LPAR2)
Binding Specificity:	AA 250-350
Reactivity:	Human
Host:	Rabbit
Clonality:	Polyclonal
Conjugate:	This EDG4 antibody is un-conjugated
Application:	Western Blotting (WB)

## Product Details

Purpose:	LPAR2 Rabbit pAb
Immunogen:	A synthetic peptide corresponding to a sequence within amino acids 250-350 of human LPAR2 (NP_004711.2).
Sequence:	FVVCWTPGQV VLLLDGLGCE SCNVLAVEKY FLLLAEANSI VNAAVYSCRD AEMRRTFRRLLCCACLRQST RESVHYTSSA QGGASTRIML PENGHPLMDS T
Isotype:	IgG
Cross-Reactivity:	Human
Characteristics:	Polyclonal Antibodies
Purification:	Affinity purification

## Target Details

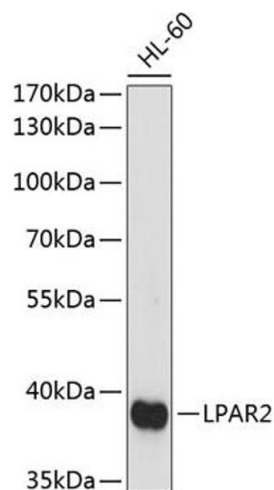
Target:	EDG4 (LPAR2)
Alternative Name:	LPAR2 ( <a href="#">LPAR2 Products</a> )
Background:	This gene encodes a member of family I of the G protein-coupled receptors, as well as the EDG family of proteins. This protein functions as a lysophosphatidic acid (LPA) receptor and contributes to Ca <sup>2+</sup> mobilization, a critical cellular response to LPA in cells, through association with Gi and Gq proteins. An alternative splice variant has been described but its full length sequence has not been determined.,LPAR2,EDG-4,EDG4,LPA-2,LPA2,Epigenetics & Nuclear Signaling,Signal Transduction,G protein signaling,G-Protein-Coupled Receptors(GPCR),LPAR2
Molecular Weight:	39kDa
Gene ID:	9170
UniProt:	<a href="#">Q9HBW0</a>

## Application Details

Application Notes:	WB,1:500 - 1:2000
Restrictions:	For Research Use only

## Handling

Format:	Liquid
Buffer:	PBS with 0.02 % sodium azide,50 % glycerol, pH 7.3.
Preservative:	Sodium azide
Precaution of Use:	This product contains Sodium azide: a POISONOUS AND HAZARDOUS SUBSTANCE which should be handled by trained staff only.
Storage:	-20 °C
Storage Comment:	Store at -20°C. Avoid freeze / thaw cycles.



#### Western Blotting

**Image 1.** Western blot analysis of extracts of HL-60 cells, using LP antibody (ABIN7268335) at 1:1000 dilution. Secondary antibody: HRP Goat Anti-Rabbit IgG (H+L) (ABIN1684268 and ABIN3020597) at 1:10000 dilution. Lysates/proteins: 25 µg per lane. Blocking buffer: 3 % nonfat dry milk in TBST. Detection: ECL Basic Kit (RM00020). Exposure time: 90s.