

Datasheet for ABIN7268341  
**anti-LAPTM4B antibody (AA 218-317)**



[Go to Product page](#)

1 Image

### Overview

|                      |  |
|----------------------|--|
| Quantity:            | 100 µL                                 |
| Target:              | LAPTM4B                                |
| Binding Specificity: | AA 218-317                             |
| Reactivity:          | Human                                  |
| Host:                | Rabbit                                 |
| Clonality:           | Polyclonal                             |
| Conjugate:           | This LAPTM4B antibody is un-conjugated |
| Application:         | Western Blotting (WB)                  |

### Product Details

|                   |   |
|-------------------|---|
| Purpose:          | LAPTM4B Rabbit pAb  |
| Immunogen:        | Recombinant fusion protein containing a sequence corresponding to amino acids 218-317 of human LAPTM4B (NP_060877.3). |
| Sequence:         | NSIQEYIRQL PPNFPYRDDV MSVNPTCLVL IILLFISIL TFKGYLISCV WNCYRYINGR<br>NSSDVLVYVT SNDTTVLLPP YDDATVNGAA KEPPPPYVSA       |
| Isotype:          | IgG   |
| Cross-Reactivity: | Human, Mouse, Rat   |
| Characteristics:  | Polyclonal Antibodies   |
| Purification:     | Affinity purification   |

## Target Details

---

|                   |   |
|-------------------|---|
| Target:           | LAPTM4B   |
| Alternative Name: | LAPTM4B ( <a href="#">LAPTM4B Products</a> )  |
| Background:       | Required for optimal lysosomal function. Blocks EGF-stimulated EGFR intraluminal sorting and degradation. Conversely by binding with the phosphatidylinositol 4,5-bisphosphate, regulates its PIP5K1C interaction, inhibits HGS ubiquitination and relieves LAPTM4B inhibition of EGFR degradation. Recruits SLC3A2 and SLC7A5 (the Leu transporter to the lysosome, promoting entry of leucine and other essential amino acid (EAA into the lysosome, stimulating activation of proton-transporting vacuolar (V-ATPase protein pump (V-ATPase and hence mTORC1 activation. Plays a role as negative regulator of TGFB1 production in regulatory T cells. Binds ceramide and facilitates its exit from late endosome in order to control cell death pathways.,LAPTM4B,LAPTM4beta,LC27,Cancer,Tumor biomarkers,LAPTM4B |
| Molecular Weight: | 25kDa/35kDa/41kDa   |
| Gene ID:          | 55353   |
| UniProt:          | <a href="#">Q86VI4</a>  |

## Application Details

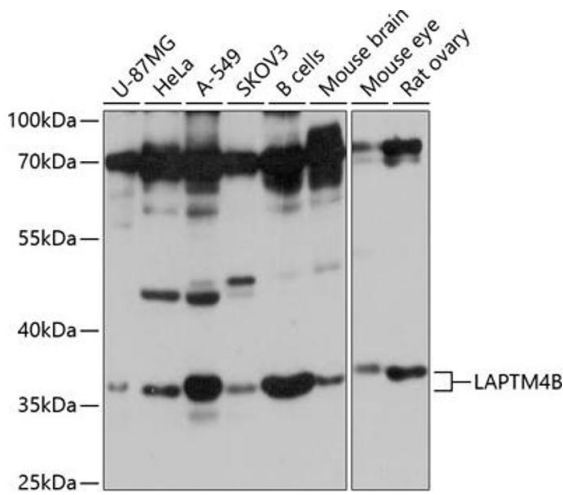
---

|                    |                       |
|--------------------|-----------------------|
| Application Notes: | WB,1:500 - 1:2000     |
| Restrictions:      | For Research Use only |

## Handling

---

|                    |  |
|--------------------|--|
| Format:            | Liquid   |
| Buffer:            | PBS with 0.02 % sodium azide,50 % glycerol, pH 7.3.  |
| Preservative:      | Sodium azide   |
| Precaution of Use: | This product contains Sodium azide: a POISONOUS AND HAZARDOUS SUBSTANCE which should be handled by trained staff only. |
| Storage:           | -20 °C   |
| Storage Comment:   | Store at -20°C. Avoid freeze / thaw cycles.  |



### Western Blotting

**Image 1.** Western blot analysis of extracts of various cell lines, using LB antibody (ABIN7268341) at 1:1000 dilution. Secondary antibody: HRP Goat Anti-Rabbit IgG (H+L) (ABIN1684268 and ABIN3020597) at 1:10000 dilution. Lysates/proteins: 25 µg per lane. Blocking buffer: 3 % nonfat dry milk in TBST. Detection: ECL Basic Kit (RM00020). Exposure time: 10s.