

Datasheet for ABIN7268345

anti-LAMP2 antibody**5** Images[Go to Product page](#)

Overview

Quantity:	100 µL
Target:	LAMP2
Reactivity:	Human
Host:	Rabbit
Clonality:	Monoclonal
Conjugate:	This LAMP2 antibody is un-conjugated
Application:	Western Blotting (WB), Immunohistochemistry (IHC)

Product Details

Purpose:	LAMP2 Rabbit mAb
Immunogen:	A synthesized peptide derived from human LAMP2
Isotype:	IgG
Cross-Reactivity:	Human, Mouse, Rat
Characteristics:	Monoclonal Antibodies
Purification:	Affinity purification

Target Details

Target:	LAMP2
Alternative Name:	LAMP2 (LAMP2 Products)
Background:	The protein encoded by this gene is a member of a family of membrane glycoproteins. This

Target Details

glycoprotein provides selectins with carbohydrate ligands. It may play a role in tumor cell metastasis. It may also function in the protection, maintenance, and adhesion of the lysosome. Alternative splicing of this gene results in multiple transcript variants encoding distinct proteins. [provided by RefSeq, Jul 2008],CD107b, LAMP-2, LAMPB, LGP-96, LGP110,Autophagy,Cancer,Cardiovascular,CDs,Cell Biology & Developmental Biology,Endocrine & Metabolism,Heart,Hematopoietic Progenitors,Immunology & Inflammation,Signal Transduction,Stem Cells,LAMP2

Molecular Weight: 120kDa

Gene ID: 3920

UniProt: [P13473](#)

Pathways: [Autophagy](#)

Application Details

Application Notes: WB,1:500 - 1:2000,IHC,1:50 - 1:200

Restrictions: For Research Use only

Handling

Format: Liquid

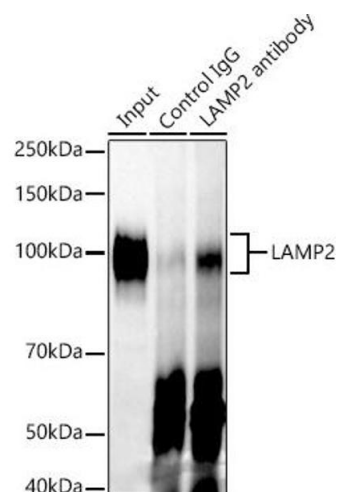
Buffer: PBS with 0.02 % sodium azide,0.05 % BSA,50 % glycerol, pH 7.3.

Preservative: Sodium azide

Precaution of Use: This product contains Sodium azide: a POISONOUS AND HAZARDOUS SUBSTANCE which should be handled by trained staff only.

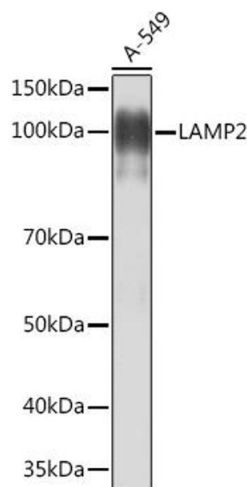
Storage: -20 °C

Storage Comment: Store at -20°C. Avoid freeze / thaw cycles.



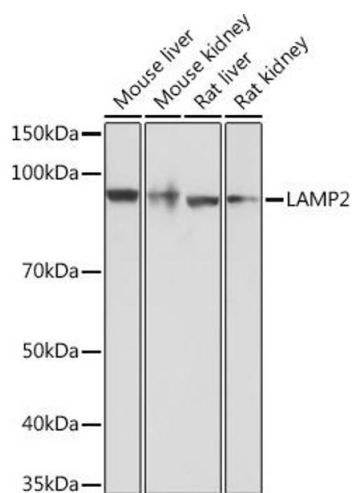
Immunoprecipitation

Image 1. Immunoprecipitation analysis of 300 µg extracts of A-549 cells using 3 µg L antibody. Western blot was performed from the immunoprecipitate using L antibody at a dilution of 1:1000.



Western Blotting

Image 2. Western blot analysis of extracts of A-549 cells, using L Rabbit mAb at 1:1000 dilution. Secondary antibody: HRP Goat Anti-Rabbit IgG (H+L) (ABIN1684268 and ABIN3020597) at 1:10000 dilution. Lysates/proteins: 25 µg per lane. Blocking buffer: 3 % nonfat dry milk in TBST. Detection: ECL Basic Kit (RM00020). Exposure time: 3 min.



Western Blotting

Image 3. Western blot analysis of extracts of various cell lines, using L Rabbit mAb at 1:1000 dilution. Secondary antibody: HRP Goat Anti-Rabbit IgG (H+L) (ABIN1684268 and ABIN3020597) at 1:10000 dilution. Lysates/proteins: 25 µg per lane. Blocking buffer: 3 % nonfat dry milk in TBST. Detection: ECL Enhanced Kit (RM00021). Exposure time: 3 min.

Please check the [product details page](#) for more images. Overall 5 images are available for ABIN7268345.