

Datasheet for ABIN7268349
anti-LOXL2 antibody (AA 505-774)[Go to Product page](#)

2 Images

Overview

Quantity:	100 µL
Target:	LOXL2
Binding Specificity:	AA 505-774
Reactivity:	Human
Host:	Rabbit
Clonality:	Polyclonal
Conjugate:	This LOXL2 antibody is un-conjugated
Application:	Western Blotting (WB)

Product Details

Purpose:	LOXL2 Rabbit pAb
Immunogen:	Recombinant fusion protein containing a sequence corresponding to amino acids 505-774 of human LOXL2 (NP_002309.1).
Sequence:	VMSGVKCSGT ELSLAHCRHD GEDVACPQGG VQYGAGVACS ETAPDLVLNA EMVQQTTYPE DRPMFMLQCA MEENCLSASA AQTDPPTGYR RLLRFSSQIH NNGQSDFRPK NGRHAWIWH CHRYHSMEV FTHYDLLNLN GTKVAEGHKA SFCLEDTECE GDIQKNYECA NFGDQGITMG CWDMYRHDID CQWVDITDVP PGDYLFQVVI NPNFEVAESD YSNNIMKCRS RYDGHRIWMY NCHIGGSFSE ETEKKFEHFS GLLNNQLSPQ
Isotype:	IgG
Cross-Reactivity:	Human, Mouse, Rat
Characteristics:	Polyclonal Antibodies

Product Details

Purification: Affinity purification

Target Details

Target: LOXL2

Alternative Name: LOXL2 ([LOXL2 Products](#))

Background: This gene encodes a member of the lysyl oxidase gene family. The prototypic member of the family is essential to the biogenesis of connective tissue, encoding an extracellular copper-dependent amine oxidase that catalyses the first step in the formation of crosslinks in collagens and elastin. A highly conserved amino acid sequence at the C-terminus end appears to be sufficient for amine oxidase activity, suggesting that each family member may retain this function. The N-terminus is poorly conserved and may impart additional roles in developmental regulation, senescence, tumor suppression, cell growth control, and chemotaxis to each member of the family.,LOXL2,LOR,LOR2,WS9-14,Cancer,Tumor biomarkers,Signal Transduction,Cell Biology & Developmental Biology,Cytoskeleton,Extracellular Matrix,LOXL2

Molecular Weight: 86kDa

Gene ID: 4017

UniProt: [Q9Y4K0](#)

Pathways: [Chromatin Binding](#)

Application Details

Application Notes: WB,1:500 - 1:2000

Restrictions: For Research Use only

Handling

Format: Liquid

Buffer: PBS with 0.02 % sodium azide,50 % glycerol, pH 7.3.

Preservative: Sodium azide

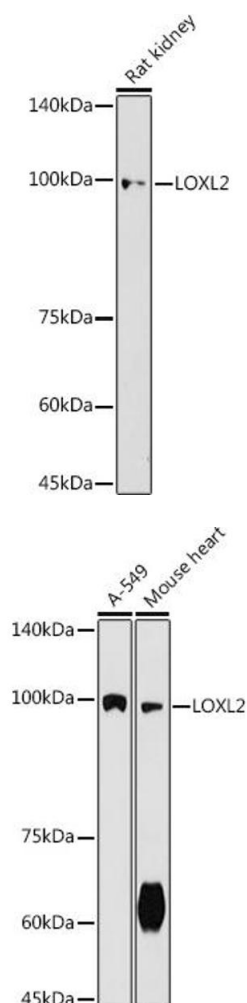
Precaution of Use: This product contains Sodium azide: a POISONOUS AND HAZARDOUS SUBSTANCE which should be handled by trained staff only.

Storage: -20 °C

Handling

Storage Comment: Store at -20°C. Avoid freeze / thaw cycles.

Images



Western Blotting

Image 1. Western blot analysis of extracts of Rat kidney, using LOXL2 antibody (ABIN7268349) at 1:500 dilution. Secondary antibody: HRP Goat Anti-Rabbit IgG (H+L) (ABIN1684268 and ABIN3020597) at 1:10000 dilution. Lysates/proteins: 25 µg per lane. Blocking buffer: 3 % nonfat dry milk in TBST. Detection: ECL Enhanced Kit (RM00021). Exposure time: 180s.

Western Blotting

Image 2. Western blot analysis of extracts of various cell lines, using LOXL2 antibody (ABIN7268349) at 1:500 dilution. Secondary antibody: HRP Goat Anti-Rabbit IgG (H+L) (ABIN1684268 and ABIN3020597) at 1:10000 dilution. Lysates/proteins: 25 µg per lane. Blocking buffer: 3 % nonfat dry milk in TBST. Detection: ECL Basic Kit (RM00020). Exposure time: 90s.