

Datasheet for ABIN7268350

anti-KARS antibody

6 Images

[Go to Product page](#)

Overview

Quantity:	100 µL
Target:	KARS
Reactivity:	Human
Host:	Rabbit
Clonality:	Monoclonal
Conjugate:	This KARS antibody is un-conjugated
Application:	Western Blotting (WB), Immunohistochemistry (IHC), Immunofluorescence (IF)

Product Details

Purpose:	LysRS/KARS Rabbit mAb
Immunogen:	A synthesized peptide derived from human LysRS/KARS
Isotype:	IgG
Cross-Reactivity:	Human, Mouse, Rat
Characteristics:	Monoclonal Antibodies
Purification:	Affinity purification

Target Details

Target:	KARS
Alternative Name:	KARS (KARS Products)
Background:	Aminoacyl-tRNA synthetases are a class of enzymes that charge tRNAs with their cognate

Target Details

amino acids. Lysyl-tRNA synthetase is a homodimer localized to the cytoplasm which belongs to the class II family of tRNA synthetases. It has been shown to be a target of autoantibodies in the human autoimmune diseases, polymyositis or dermatomyositis. Alternatively spliced transcript variants encoding different isoforms have been found for this gene. [provided by RefSeq, Jul 2008],CMTRIB, DFNB89, KARS1, KARS2, KRS,Epigenetics & Nuclear Signaling,KARS

Molecular Weight: 73kDa

Gene ID: 3735

UniProt: [Q15046](#)

Application Details

Application Notes: WB,1:500 - 1:2000,IHC,1:50 - 1:200,IF,1:50 - 1:200

Restrictions: For Research Use only

Handling

Format: Liquid

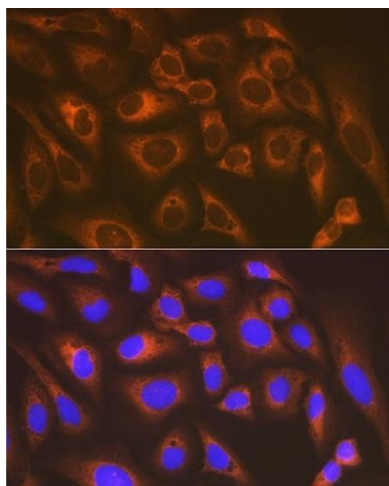
Buffer: PBS with 0.02 % sodium azide,0.05 % BSA,50 % glycerol, pH 7.3.

Preservative: Sodium azide

Precaution of Use: This product contains Sodium azide: a POISONOUS AND HAZARDOUS SUBSTANCE which should be handled by trained staff only.

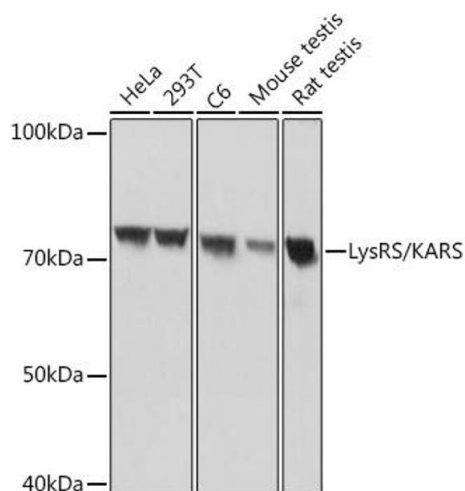
Storage: -20 °C

Storage Comment: Store at -20°C. Avoid freeze / thaw cycles.



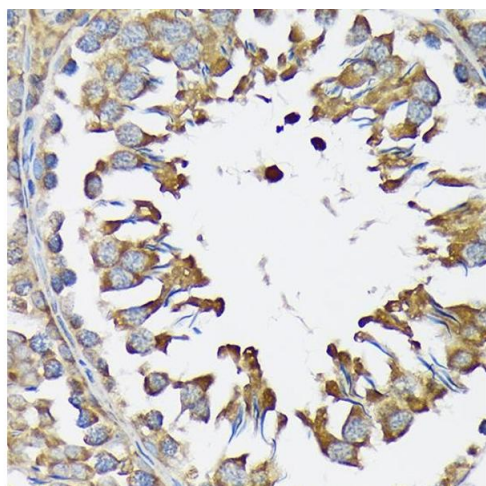
Immunofluorescence

Image 1. Immunofluorescence analysis of U-2 OS cells using LysRS/KARS Rabbit mAb (ABIN7268350) at dilution of 1:100 (40x lens). Blue: DAPI for nuclear staining.



Western Blotting

Image 2. Western blot analysis of extracts of various cell lines, using LysRS/KARS Rabbit mAb (ABIN7268350) at 1:1000 dilution. Secondary antibody: HRP Goat Anti-Rabbit IgG (H+L) (ABIN1684268 and ABIN3020597) at 1:10000 dilution. Lysates/proteins: 25 µg per lane. Blocking buffer: 3 % nonfat dry milk in TBST. Detection: ECL Basic Kit (RM00020). Exposure time: 1s.



Immunohistochemistry

Image 3. Immunohistochemistry of paraffin-embedded rat testis using LysRS/KARS Rabbit mAb (ABIN7268350) at dilution of 1:100 (40x lens). Perform microwave antigen retrieval with 10 mM Tris/EDTA buffer pH 9.0 before commencing with IHC staining protocol.

Please check the [product details page](#) for more images. Overall 6 images are available for ABIN7268350.