



[Go to Product page](#)

Datasheet for ABIN7268354
anti-MAD2L1 antibody

3 Images

Overview

Quantity:	100 µL
Target:	MAD2L1
Reactivity:	Human
Host:	Rabbit
Clonality:	Monoclonal
Conjugate:	This MAD2L1 antibody is un-conjugated
Application:	Western Blotting (WB), Immunohistochemistry (IHC)

Product Details

Purpose:	MAD2/MAD2L1 Rabbit mAb
Immunogen:	A synthesized peptide derived from human MAD2/MAD2/MAD2L1
Isotype:	IgG
Cross-Reactivity:	Human, Mouse, Rat
Characteristics:	Monoclonal Antibodies
Purification:	Affinity purification

Target Details

Target:	MAD2L1
Alternative Name:	MAD2L1 (MAD2L1 Products)
Background:	MAD2L1 is a component of the mitotic spindle assembly checkpoint that prevents the onset of

Target Details

anaphase until all chromosomes are properly aligned at the metaphase plate. MAD2L1 is related to the MAD2L2 gene located on chromosome 1. A MAD2 pseudogene has been mapped to chromosome 14. [provided by RefSeq, Jul 2008],HSMAD2, MAD2,Cancer,Cell Biology & Developmental Biology,Cell Cycle,Cell Cycle_Centromere,MAD2L1

Molecular Weight: 24kDa

Gene ID: 4085

UniProt: [Q13257](#)

Application Details

Application Notes: WB,1:500 - 1:2000,IHC,1:50 - 1:200

Restrictions: For Research Use only

Handling

Format: Liquid

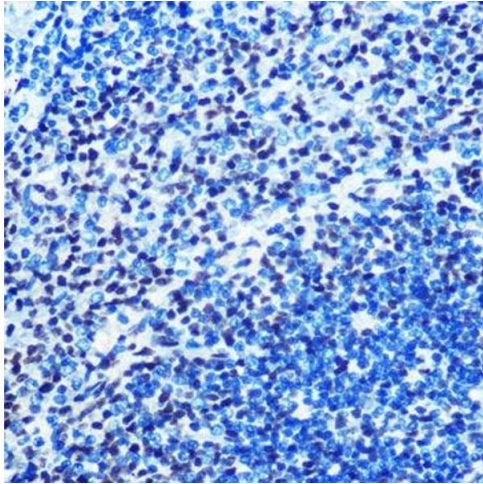
Buffer: PBS with 0.02 % sodium azide,0.05 % BSA,50 % glycerol, pH 7.3.

Preservative: Sodium azide

Precaution of Use: This product contains Sodium azide: a POISONOUS AND HAZARDOUS SUBSTANCE which should be handled by trained staff only.

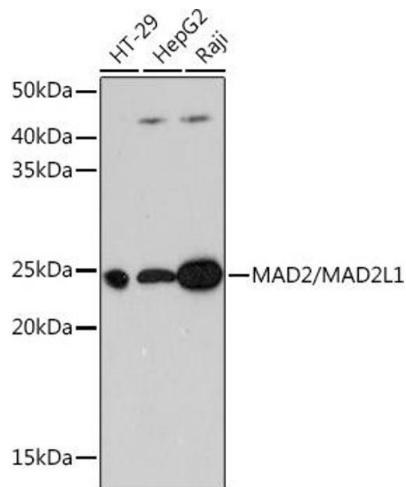
Storage: -20 °C

Storage Comment: Store at -20°C. Avoid freeze / thaw cycles.



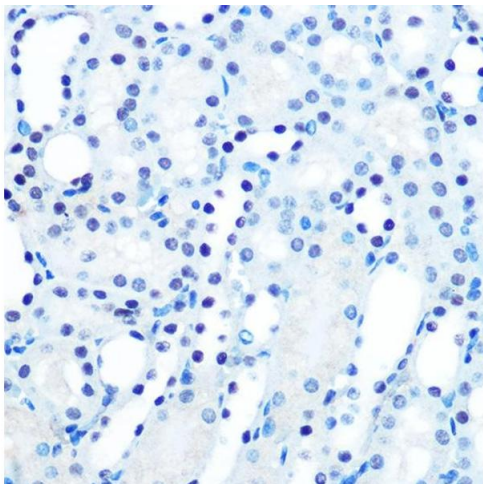
Immunohistochemistry

Image 1. Immunohistochemistry of paraffin-embedded rat spleen using M/M/ML1 Rabbit mAb (ABIN7268354) at dilution of 1:100 (40x lens). Perform microwave antigen retrieval with 10 mM PBS buffer pH 7.2 before commencing with IHC staining protocol.



Western Blotting

Image 2. Western blot analysis of extracts of various cell lines, using M/M/ML1 Rabbit mAb (ABIN7268354) at 1:1000 dilution. Secondary antibody: HRP Goat Anti-Rabbit IgG (H+L) (ABIN1684268 and ABIN3020597) at 1:10000 dilution. Lysates/proteins: 25 µg per lane. Blocking buffer: 3 % nonfat dry milk in TBST. Detection: ECL Basic Kit (RM00020). Exposure time: 3 min.



Immunohistochemistry

Image 3. Immunohistochemistry of paraffin-embedded mouse kidney using M/M/ML1 Rabbit mAb (ABIN7268354) at dilution of 1:100 (40x lens). Perform microwave antigen retrieval with 10 mM PBS buffer pH 7.2 before commencing with IHC staining protocol.